

GFP-Tag兔多克隆抗体

GFP-Tag Rabbit Polyclonal Antibody

本产品冰袋运输；-20℃保存，质保期为自收货后24个月内，-20℃保存时无需分装。

货号规格

货号	规格
LF310	100 μL
LF310S	20 μL

产品简介

本抗体为兔多克隆抗体。GFP(Green Fluorescent Protein) 最早是从一种生活在北太平洋寒冷水域的水母(Aequoria victoria) 体内发现的蛋白,该蛋白在蓝色波长范围的光激发下能发出绿色的荧光,其最大和次大的激发波长是 395 nm 和 470 nm; 最大发射波长是 509 nm,在 540 nm 处有一肩峰。由于 GFP 具有荧光性质稳定,对细胞无毒害,表达具有光谱性等一系列的优点,常作为报告基因,融合标签和细胞标记物等,应用于分子和细胞生物学领域。

缓冲液 10 mM PBS(pH 7.4), 50% glycerol

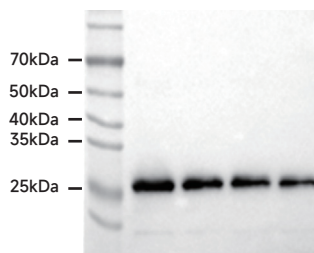
防腐剂 0.02% sodium azide

应用范围 Western Blot(WB), ELISA

推荐浓度 (最适浓度需根据具体情况调试)
WB ~ 1:5,000

注意事项

1. 为了获得实验最佳效果,请根据实验调整最佳工作稀释度;
2. 为了您的安全和健康,请穿实验服并戴一次性手套操作;
3. 本产品仅限科研使用。



Western Blot - GFP-Tag Rabbit Polyclonal Antibody (Cat#LF310)

All lanes: Anti-Cytokeratin 19 Rabbit pAb at 1:5,000 dilution

Lane 1: GFP antigen 400 ng

Lane 2: GFP antigen 200 ng

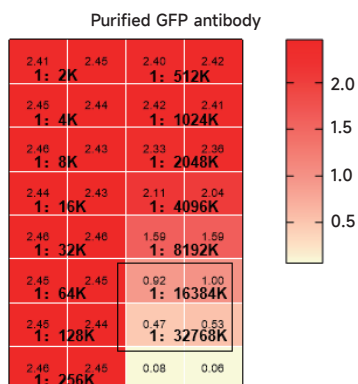
Lane 3: GFP antigen 100 ng

Lane 4: GFP antigen 50 ng

Secondary

All lanes: Goat Anti-Rabbit IgG (H+L), HRP conjugated (LF102) at 1:5,000 dilution

Developed using the ECL technique (SQ201).



ELISA - GFP-Tag Rabbit Polyclonal Antibody (Cat#LF310)

Primary antibody dilution: gradient dilution

Second antibody dilution: 1:5,000

ELISA methods: Antigen(5 μg/mL) was coated in 96 pore plate over night. Then plate was blocked with 5% skim milk for 1 h followed by primary and second antibody incubation. TMB chromogenic reaction was conducted at optical density 450 nm.