

α -tubulin兔单克隆抗体

α -tubulin Rabbit Monoclonal Antibody

本产品冰袋运输；-20°C保存，质保期为自收货后24个月内，-20°C保存时无需分装。

货号规格

货号	规格
LF213	100 μ L
LF213S	20 μ L

产品简介

本抗体为重组兔单克隆抗体。微管是细胞骨架的重要组成部分，存在于所有哺乳动物细胞。它由分子量约 55 kDa 的 α 微管蛋白 (α -Tubulin) 和 β 微管蛋白 (β -Tubulin) 组成，并以 $\alpha\beta$ 异源二聚体的形式存在。二者表达水平相对恒定，常被用于 Western Blot 检测时校正系统的内参照。

克隆号	79E05K53
缓冲液	10 mM PBS(pH 7.4), 50% glycerol
防腐剂	0.02% sodium azide
应用种属	人、大鼠、小鼠
应用范围	Western Blot(WB)、Immunohistochemistry(IHC)、Immunofluorescence(IF)

推荐浓度 (最适浓度需根据具体情况调试)

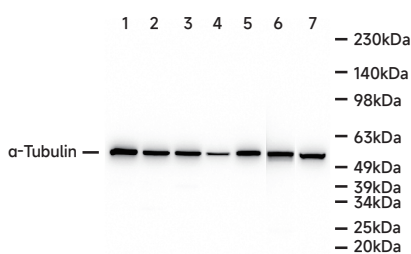
Western Blot: 1:5,000 ~ 1:10,000;

Immunohistochemistry: 1:200 ~ 1:500;

Immunofluorescence: 1:200 ~ 1:500。

注意事项

1. 为了获得实验最佳效果，请根据实验调整最佳工作稀释度；
2. 为了您的安全和健康，请穿实验服并戴一次性手套操作；
3. 本产品仅限科研使用。



Western Blot-Anti- α -Tubulin Rabbit mAb (LF213)

All lanes: Anti- α -Tubulin LF213 mAb at 1:5,000 dilution

Lane 1: HeLa (Human cervix adenocarcinoma epithelial cell) whole cell lysates

Lane 2: RAW264.7 (Mouse mononuclear macrophage leukemia epithelial cell)

Lane 3: C2C12 (Mouse myoblasts epithelial cell) whole cell lysates

Lane 4: A431 (Human epidermoid carcinoma cell) whole cell lysates

Lane 5: T24 (Human bladder cancer epithelial cell) whole cell lysates

Lane 6: Rat spleen whole tissue lysates

Lane 7: Balb/c mouse spleen whole tissue lysates/Lysates/proteins at 10 μ g per lane.

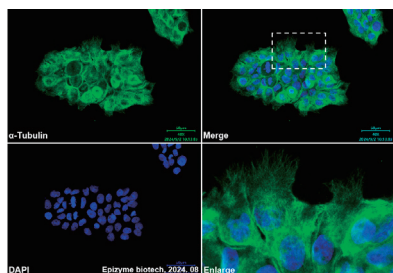
Secondary

All lanes: Goat Anti-Rabbit IgG (H+L), HRP conjugated (LF102) at 1:5,000 dilution

Predicted band size: 55 kDa

Observed band size: 55 kDa

Developed using the ECL technique (SQ201).



Immunofluorescence (Formalin/PFA-fixed cells) - Anti- α -Tubulin Rabbit mAb (LF213)

Immunofluorescence analysis of A431 cells labelling α -Tubulin .

Cells were incubated overnight at room temperature with LF213 at 1:100.

Secondary antibodies Goat anti-Rabbit (488) (shown in green) were used with dilution of 1:1000, incubated 1 h at room temperature.

DAPI was used as nuclear counterstain (shown in blue).

Heat mediated antigen retrieval with Tris-EDTA buffer (pH 9.0) for 30 mins.