

# BF488标记二抗，山羊抗小鼠IgG

Goat Anti-Mouse IgG (H+L), BF488 Conjugated

本产品冰袋运输；4°C避光保存24个月。

## 货号规格

货号	规格
LF107	100 $\mu$ L

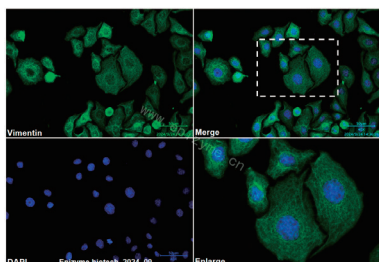
## 产品介绍

本产品为 BF488 荧光染料 (最大激发波长是 495 nm, 最大发射波长是 519 nm) 标记的经亲和纯化的山羊抗体, 特异识别小鼠 IgG (H+L), 检测灵敏度高, 本底低, 对其它种属 IgG 无明显交叉反应, 可用于免疫荧光检测。

免疫原	小鼠 IgG
浓度	2 mg/mL
缓冲液	10 mM PBS (pH 7.2)
稳定剂	2 mg/mL BSA (IgG-free and protease-free)
防腐剂	0.05% Sodium Azide
应用范围	Western Blot (WB), Immunofluorescence (IF), Flow Cytometry (FCM)
推荐浓度	Western Blot: 1:5,000~1:10,000 Immunofluorescence: 1:1,000~1:2,000 Flow Cytometry: 1:1,000~1:2,000

## 注意事项

- 为了您的安全和健康, 请穿实验服并戴一次性手套操作;
- 本产品仅限科研使用。

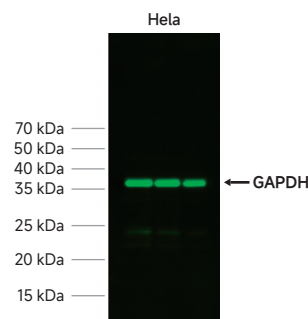


Immunofluorescence - Goat Anti-Mouse IgG (H+L), BF488 Conjugated (LF107)

Sample: HeLa cells

The cells were fixed with 4% paraformaldehyde (10 min), permeabilized with 0.1% Triton X-100 for 5 minutes and then blocked with 5% BSA in 0.1% PBS-Tween for 0.5 hours.  
Primary antibody: Anti-Vimentin Mouse mAb (M010697) at 1:100 dilution

Secondary antibody: LF107 at 1:1,000 dilution (shown in green)  
Nuclei were stained with DAPI (shown in blue).



Western Blot - Goat Anti-Mouse IgG (H+L), BF488 Conjugated (LF107)

All lanes: GAPDH Mouse Monoclonal Antibody (LF205) at 1:10,000 dilution

All lanes: HeLa (Human cervix adenocarcinoma epithelial cell) whole cell lysates

Lysates/proteins at 10  $\mu$ g per lane

Secondary antibody: LF107 at 1:5,000 dilution