

GF555标记二抗，山羊抗兔IgG

Goat Anti-Rabbit IgG (H+L), GF555 Conjugated

本产品冰袋运输；4°C避光保存24个月。

货号规格

货号	规格
LF110	100 μ L

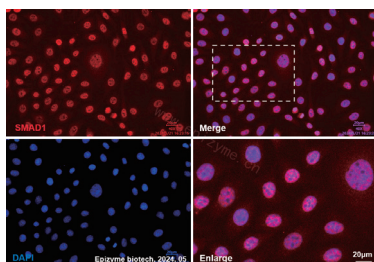
产品介绍

本产品为 GF555 荧光染料 (最大激发波长是 557 nm, 最大发射波长是 576 nm) 标记的经亲和纯化的山羊抗体, 特异识别兔 IgG (H+L), 检测灵敏度高, 本底低, 对其它种属 IgG 无明显交叉反应, 可用于免疫荧光检测。

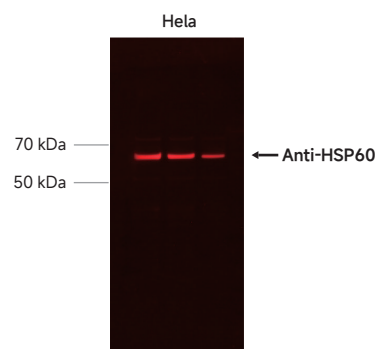
免疫原	兔 IgG
浓度	2 mg/mL
缓冲液	10 mM PBS (pH 7.2)
稳定剂	2 mg/mL BSA (IgG-free and protease-free)
防腐剂	0.05% Sodium Azide
应用范围	Western Blot (WB), Immunofluorescence (IF), Flow Cytometry (FCM)
推荐浓度	Western Blot: 1:5,000~1:10,000 Immunofluorescence: 1:1,000~1:2,000 Flow Cytometry: 1:1,000~1:2,000

注意事项

1. 为了您的安全和健康, 请穿实验服并戴一次性手套操作;
2. 本产品仅限科研使用。



Immunofluorescence - Goat Anti-Rabbit IgG (H+L), GF555 Conjugated (LF110)
Sample: HeLa cells
The cells were fixed with 4% paraformaldehyde (10 min), permeabilized with 0.1% Triton X-100 for 5 minutes and then blocked with 5% BSA in 0.1% PBS-Tween for 0.5 hours.
Primary antibody: Anti-Smad1 Rabbit mAb (R013764) at 1:100 dilution
Secondary antibody: LF110 at 1:1,000 dilution (shown in green)
Nuclei were stained with DAPI (shown in blue).



Western Blot - Goat Anti-Rabbit IgG (H+L), GF555 Conjugated (LF110)
All lanes: Anti-HSP60 Rabbit pAb (P900009) at 1:2,500 dilution
All lanes: HeLa (Human cervix adenocarcinoma epithelial cell) whole cell lysates
Lysates/proteins at 10 μ g per lane
Secondary antibody: LF110 at 1:5,000 dilution