

α -tubulin兔多克隆抗体

α -tubulin Rabbit Polyclonal Antibody

本产品冰袋运输；-20℃保存，质保期为自收货后24个月内，-20℃保存时无需分装。

货号规格

货号	规格
LF210	100 μ L
LF210S	20 μ L

产品简介

本抗体为兔多克隆抗体。微管是细胞骨架的重要组成部分，存在于所有哺乳动物细胞。它由分子量约55 kDa的 α 微管蛋白(α -Tubulin)和 β 微管蛋白(β -Tubulin)组成，并以 $\alpha\beta$ 异源二聚体的形式存在。其中 β -Tubulin蛋白表达水平相对恒定，常被用于Western Blot检测时校正系统的内参照。

缓冲液 10 mM PBS(pH 7.4), 50% glycerol

防腐剂 0.02% sodium azide

应用种属 人、大鼠、小鼠、兔

应用范围 Western Blot(WB)、Immunohistochemistry(IHC)、Immunofluorescence(IF)

推荐浓度 (最适浓度需根据具体情况调试)

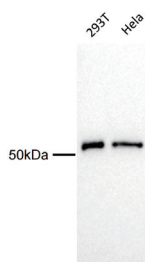
Western Blot: 1:1,000 ~ 1:5,000;

Immunohistochemistry: 1:1,000;

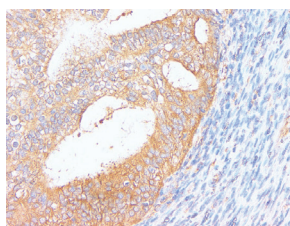
Immunofluorescence: 1:1,000。

注意事项

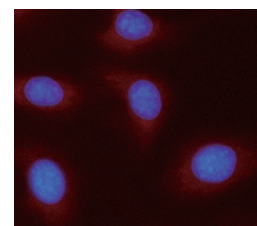
1. 为了获得实验最佳效果，请根据实验调整最佳工作稀释度；
2. 为了您的安全和健康，请穿实验服并戴一次性手套操作；
3. 本产品仅限科研使用。



All lanes: Anti- α -Tubulin Rabbit pAb at 1:1,000 dilution
Lane 1: 293T cell Lysates
Lane 2: HeLa cell Lysates
Lysates/proteins at 20 μ g per lane.
Secondary Goat Anti-Rabbit IgG, (H+L), Peroxidase conjugated (LF102) at 1:5,000 dilution.
Observed band size: 55 kDa
Blocking/Dilution buffer: 1 \times PBST.



Immunohistochemical analysis of paraffin-embedded Endometrial cancer tissue using Anti- α -Tubulin Rabbit pAb. Samples were incubated with primary antibody (1:1,000) overnight at 4°C. A HRP-Conjugated anti-rabbit IgG (LF102) was used as the secondary antibody for 0.5 hour.



Immunofluorescent analysis of HeLa cells using Anti- α -tubulin at dilution of 1:1,000 with DAPI as a counterstain for visualizing the nucleus (blue). Tubulin is a cytoskeletal protein important in cell division and migration and was visualized with Cy3 dye (Red).