

[KD Validated] Anti-EIF4EBP1 Rabbit mAb

Purified Recombinant Rabbit Monoclonal Antibody

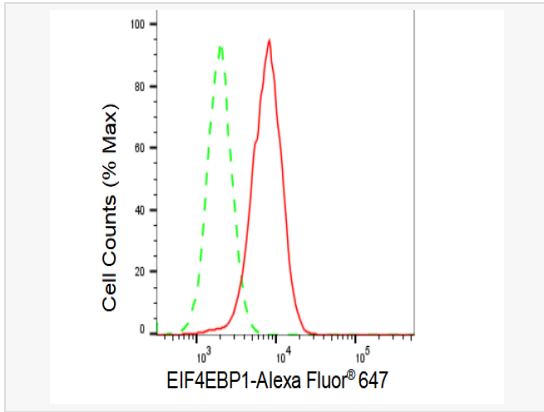
Catalog # R021883

Product Information

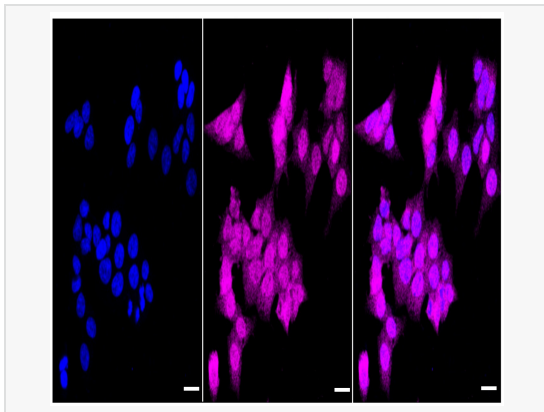
Application	WB, FC, IF (Cell)/ICC
Reactivity	Human, Mouse, Rat
Dilution	WB 1:1,000~1:5,000; FC 1:200~1:2,000; IF 1:100~1:1,000
Host	Rabbit
Clonality	Monoclonal
Clone No.	14F54T66
Isotype	IgG
Label	Unconjugated
Immunogen	A synthesized peptide derived from human eIF4EBP1
Format	Affinity purified monoclonal antibody supplied in PBS with 0.02% sodium azide and 50% glycerol, pH 7.3.
Storage	Shipped on wet ice. Store at -20°C. Stable for 12 months from date of receipt. Aliquoting is unnecessary for -20°C storage.
Precautions	[KD Validated] Anti-EIF4EBP1 Rabbit mAb [14F54T66] is for research use only and not for use in diagnostic or therapeutic procedures.

Protein Information

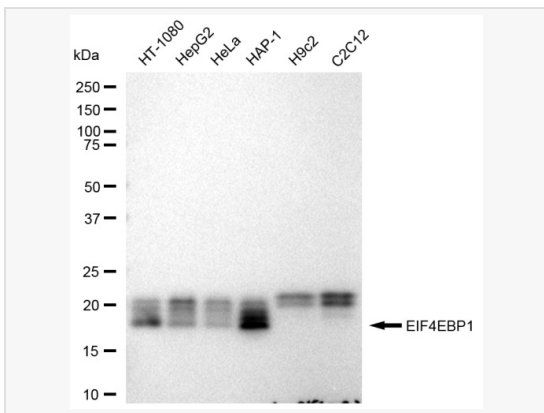
Synonyms	EIF4EBP1; Eukaryotic Translation Initiation Factor 4E Binding Protein 1; PHAS-I; 4E-BP1; Phosphorylated Heat- And Acid-Stable Protein Regulated By Insulin 1; Eukaryotic Translation Initiation Factor 4E-Binding Protein 1; EIF4E-Binding Protein 1; 4EBP1; BP-1.
Calculated MW	Calculated MW: 13 kDa, Observed MW: 18 kDa
Uniprot ID	Q13541
Gene ID	1978
Background	Translation repressor protein 4E-BP1 (also known as PHAS-1) inhibits cap-dependent translation by binding to the translation initiation factor eIF4E. Hyperphosphorylation of 4E-BP1 disrupts this interaction and results in activation of cap-dependent translation. Both the PI3 kinase/Akt pathway and FRAP/mTOR kinase regulate 4E-BP1 activity.



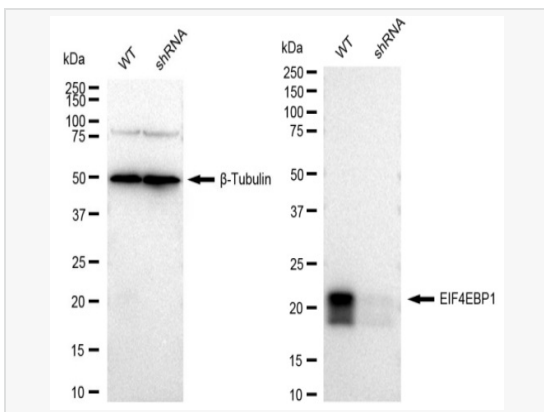
Flow cytometric analysis of EIF4EBP1 expression in HAP-1 cells using EIF4EBP1 antibody (R021883, 1:2,000). Green, isotype control; red, EIF4EBP1.



Immunocytochemical staining of HAP-1 cells with EIF4EBP1 antibody (R021883, 1:1,000). Nuclei were stained blue with DAPI; EIF4EBP1 was stained magenta with Alexa Fluor® 647. Images were taken using Leica stellaris 5. Protein abundance based on laser Intensity and smart gain: Medium. Scale bar: 20 µm.



Western blotting analysis using EIF4EBP1 antibody (R021883). Total cell lysates (30 µg) from various cell lines were loaded and separated by SDS-PAGE. The blot was incubated with EIF4EBP1 antibody (R021883, 1:5,000) and HRP-conjugated goat anti-rabbit secondary antibody (1:20,000) respectively. Image was developed using ECL Substrate Kit.



Western blotting analysis using EIF4EBP1 antibody (R021883). EIF4EBP1 expression in wild type (WT) and EIF4EBP1 shRNA knockdown (KD) HeLa cells with 30 µg of total cell lysates. β-Tubulin serves as a loading control. The blot was incubated with EIF4EBP1 antibody (R021883, 1:5,000) and HRP-conjugated goat anti-rabbit secondary antibody (1:20,000) respectively. Image was developed using ECL Substrate Kit.