

## [KD Validated] Anti-ROCK2 Rabbit mAb

Purified Recombinant Rabbit Monoclonal Antibody

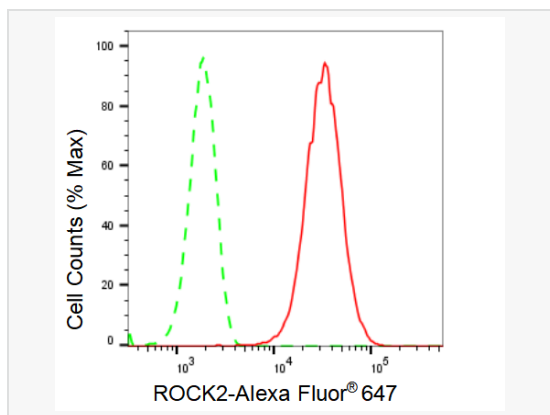
Catalog # R021869

### Product Information

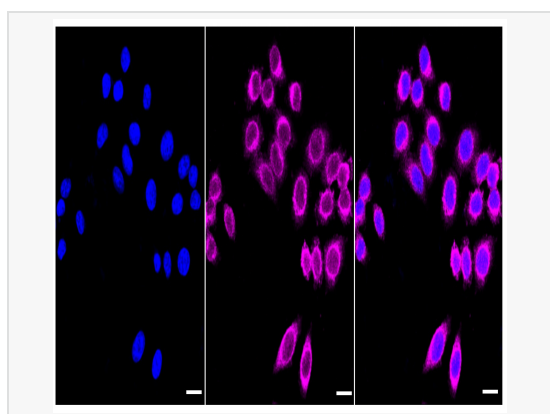
Application	WB, FC, IF (Cell)/ICC
Reactivity	Human, Mouse, Rat
Dilution	WB 1:1,000~1:5,000; FC 1:200~1:2,000; IF 1:100~1:1,000
Host	Rabbit
Clonality	Monoclonal
Clone No.	92L07O20
Isotype	IgG
Label	Unconjugated
Immunogen	A synthesized peptide derived from human ROCK2
Format	Affinity purified monoclonal antibody supplied in PBS with 0.02% sodium azide and 50% glycerol, pH 7.3.
Storage	Shipped on wet ice. Store at -20°C. Stable for 12 months from date of receipt. Aliquoting is unnecessary for -20°C storage.
Precautions	[KD Validated] Anti-ROCK2 Rabbit mAb [92L07O20] is for research use only and not for use in diagnostic or therapeutic procedures.

### Protein Information

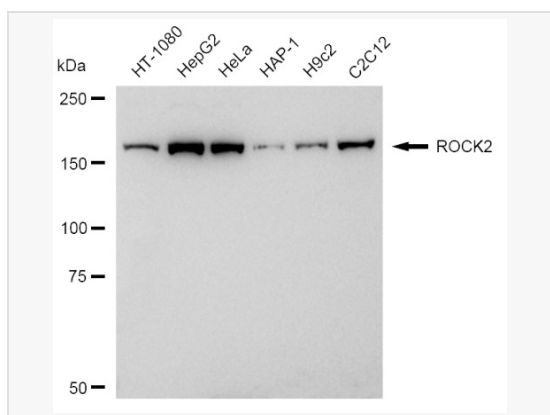
Synonyms	ROCK2; Rho Associated Coiled-Coil Containing Protein Kinase 2; Rho-Associated, Coiled-Coil-Containing Protein Kinase II; Rho-Associated Protein Kinase 2; P164 ROCK-2; EC 2.7.11.1; ROCK-II; Rho-Associated, Coiled-Coil-Containing Protein Kinase 2; Rho Kinase 2; EC 2.7.11; KIAA0619.
Calculated MW	Calculated MW: 161 kDa, Observed MW: 161 kDa
Uniprot ID	O75116
Gene ID	9475
Background	Regulates the assembly of the actin cytoskeleton. Promotes formation of stress fibers and of focal adhesion complexes. Plays a role in smooth muscle contraction.



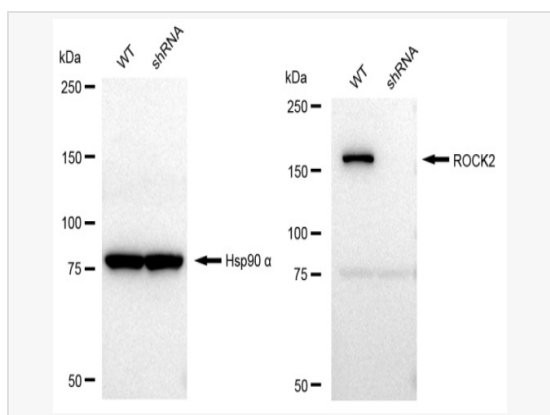
Flow cytometric analysis of ROCK2 expression in HepG2 cells using ROCK2 antibody (R021869, 1:2,000). Green, isotype control; red, ROCK2.



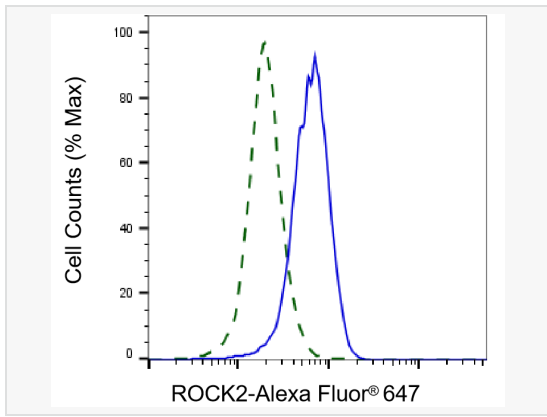
Immunocytochemical staining of HepG2 cells with ROCK2 antibody (R021869, 1:1,000). Nuclei were stained blue with DAPI; ROCK2 co-chaperone 3 was stained magenta with Alexa Fluor® 647. Images were taken using Leica stellaris 5. Protein abundance based on laser Intensity and smart gain: Medium. Scale bar: 20 µm.



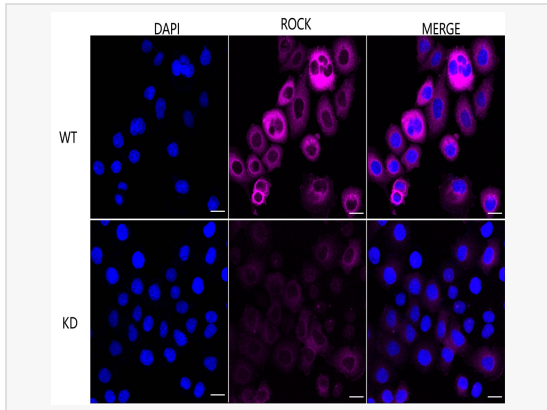
Western blotting analysis using ROCK2 antibody (R021869). Total cell lysates (30 µg) from various cell lines were loaded and separated by SDS-PAGE. The blot was incubated with ROCK2 antibody (R021869, 1:5,000) and HRP-conjugated goat anti-rabbit secondary antibody (1:20,000) respectively. Image was developed using ECL Substrate Kit.



Western blotting analysis using ROCK2 antibody (R021869). ROCK2 expression in wild type (WT) and ROCK2 shRNA knockdown (KD) HeLa cells with 30 µg of total cell lysates. Hsp90 α serves as a loading control. The blot was incubated with ROCK2 antibody (R021869, 1:5,000) and HRP-conjugated goat anti-rabbit secondary antibody (1:20,000) respectively. Image was developed using ECL Substrate Kit.



Validation of ROCK2 knockdown using flow cytometry. Wild-type(WT, Blue) and knockdown(KD, Green) HeLa cells were stained with ROCK2 antibody (R021869, 1:2,000) and analyzed using BD flow cytometer.



Immunocytochemical staining of HeLa cells using ROCK2 antibody (R021869, 1:1,000), Top panel: wild-type (WT); Bottom panel: ROCK2 shRNA knockdown (KD). Nuclei were stained blue with DAPI; ROCK2 was stained magenta with Alexa Fluor® 647. Scale bar, 20  $\mu$ m. Permeabilization: Triton.