

[KD Validated] Anti-RPS6KA1 Rabbit mAb

Purified Recombinant Rabbit Monoclonal Antibody

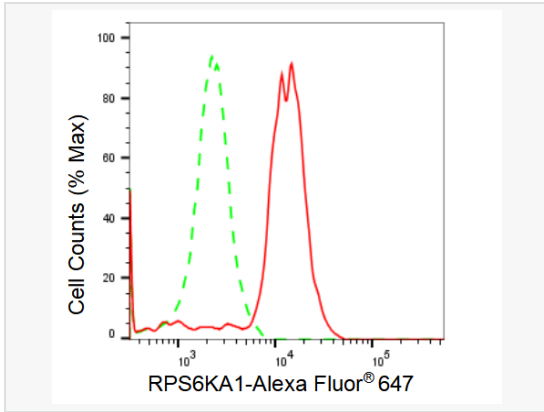
Catalog # R021849

Product Information

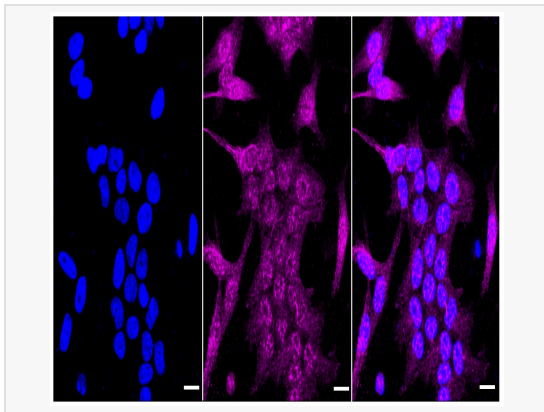
Application	WB, FC, IF (Cell)/ICC
Reactivity	Human
Dilution	WB 1:1,000~1:5,000; FC 1:200~1:2,000; IF 1:100~1:1,000
Host	Rabbit
Clonality	Monoclonal
Clone No.	43S15S56
Isotype	IgG
Label	Unconjugated
Immunogen	A synthesized peptide derived from human RSK1 p90
Format	Affinity purified monoclonal antibody supplied in PBS with 0.02% sodium azide and 50% glycerol, pH 7.3.
Storage	Shipped on wet ice. Store at -20°C. Stable for 12 months from date of receipt. Aliquoting is unnecessary for -20°C storage.
Precautions	[KD Validated] Anti-RPS6KA1 Rabbit mAb [43S15S56] is for research use only and not for use in diagnostic or therapeutic procedures.

Protein Information

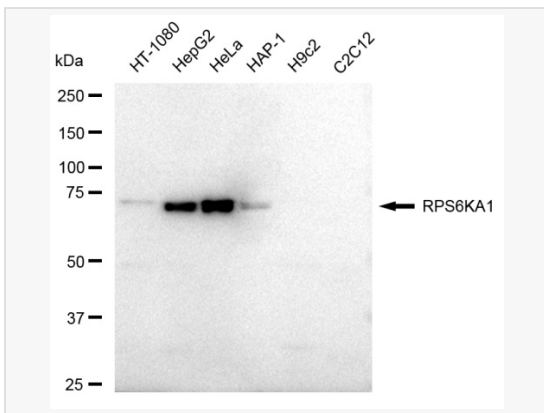
Synonyms	RPS6KA1; Ribosomal Protein S6 Kinase A1; RSK1; MAPKAPK1; HU-1; MAP Kinase-Activated Protein Kinase 1a; 90 KDa Ribosomal Protein S6 Kinase 1; Ribosomal Protein S6 Kinase Alpha-1; MAPK-Activated Protein Kinase 1a; Ribosomal S6 Kinase 1; MAPKAP Kinase 1a; EC 2.7.11.1; MAPKAPK-1a; MAPKAPK1A; P90-RSK 1; P90RSK1; P90Rsk; P90S6K; RSK-1; DJ590P13.1 (Ribosomal Protein S6 Kinase, 90kD, Polypeptide 1); Ribosomal Protein S6 Kinase, 90kDa, Polypeptide 1; Ribosomal Protein S6 Kinase, 90kD, Polypeptide 1; S6K-Alpha 1; S6K-Alpha-1; EC 2.7.11; P90RSK; RSK.
Calculated MW	Calculated MW: 83 kDa, Observed MW: 83 kDa
Uniprot ID	Q15418
Gene ID	6195
Background	Rsk1 is a member of a family of 90kDa ribosomal protein S6 kinases, which includes Rsk1, Rsk2 and Rsk3. These are broadly expressed serine / threonine protein kinases activated in response to mitogenic stimuli, including extracellular signal regulated protein kinases Erk1 and Erk2. Rsk1 is activated by MAPK in vitro and in vivo via phosphorylation. Active Rsks appear to play a major role in transcriptional regulation by translocating to the nucleus and phosphorylating c-Fos and CREB.



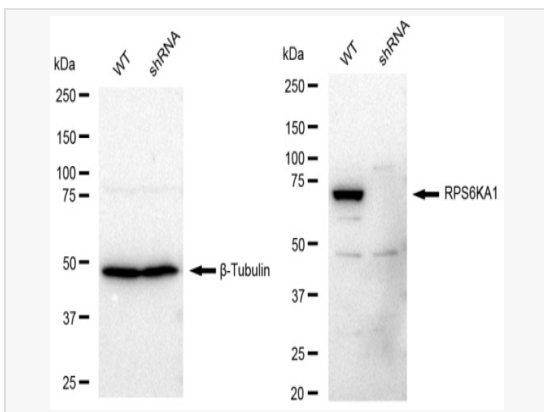
Flow cytometric analysis of RPS6KA1 expression in HeLa cells using RPS6KA1 antibody (R021849, 1:2,000). Green, isotype control; red, RPS6KA1.



Immunocytochemical staining of HeLa cells with RPS6KA1 antibody (R021849, 1:1,000). Nuclei were stained blue with DAPI; RPS6KA1 was stained magenta with Alexa Fluor® 647. Images were taken using Leica stellaris 5. Protein abundance based on laser Intensity and smart gain: Medium. Scale bar: 20 μ m.



Western blotting analysis using RPS6KA1 antibody (R021849). Total cell lysates (30 μ g) from various cell lines were loaded and separated by SDS-PAGE. The blot was incubated with RPS6KA1 antibody (R021849, 1:5,000) and HRP-conjugated goat anti-rabbit secondary antibody (1:20,000) respectively. Image was developed using ECL Substrate Kit.



Western blotting analysis using RPS6KA1 antibody (R021849). RPS6KA1 expression in wild type (WT) and RPS6KA1 shRNA knockdown (KD) HeLa cells with 30 μ g of total cell lysates. β -Tubulin serves as a loading control. The blot was incubated with RPS6KA1 antibody (R021849, 1:5,000) and HRP-conjugated goat anti-rabbit secondary antibody (1:20,000) respectively. Image was developed using ECL Substrate Kit.