

## [KD Validated] Anti-NEK2 Rabbit mAb

Purified Recombinant Rabbit Monoclonal Antibody

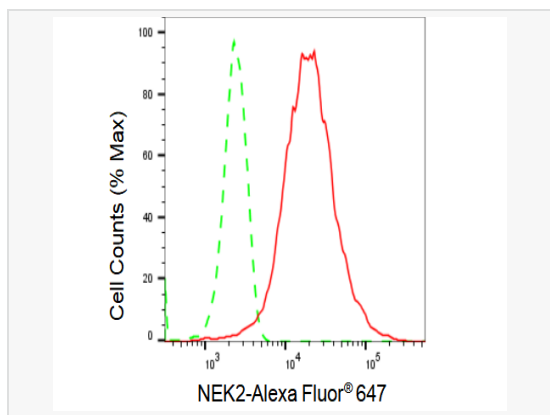
Catalog # R021848

### Product Information

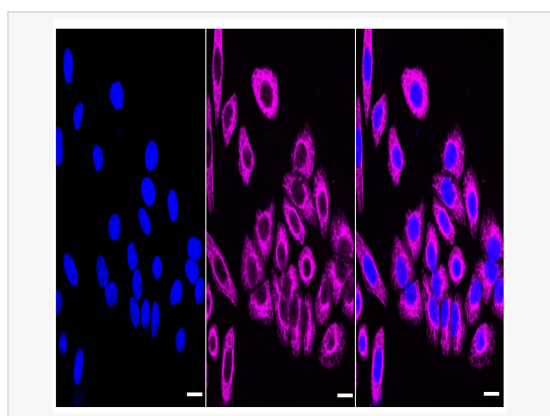
Application	WB, FC, IF (Cell)/ICC
Reactivity	Human
Dilution	WB 1:1,000~1:5,000; FC 1:200~1:2,000; IF 1:100~1:1,000
Host	Rabbit
Clonality	Monoclonal
Clone No.	83P91C53
Isotype	IgG
Label	Unconjugated
Immunogen	A synthesized peptide derived from human NEK2
Format	Affinity purified monoclonal antibody supplied in PBS with 0.02% sodium azide and 50% glycerol, pH 7.3.
Storage	Shipped on wet ice. Store at -20°C. Stable for 12 months from date of receipt. Aliquoting is unnecessary for -20°C storage.
Precautions	[KD Validated] Anti-NEK2 Rabbit mAb [83P91C53] is for research use only and not for use in diagnostic or therapeutic procedures.

### Protein Information

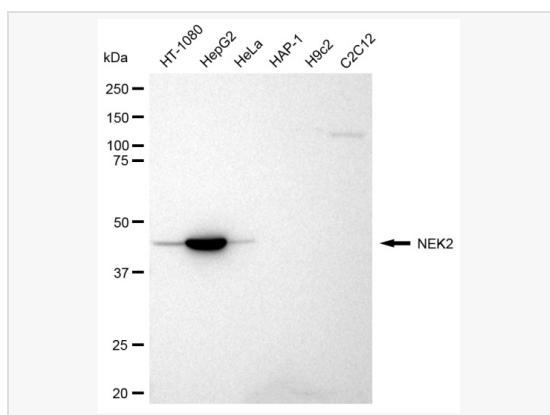
Synonyms	NEK2; NIMA Related Kinase 2; NEK2A; NLK1; PPP1R111; RP67; NIMA (Never In Mitosis Gene A)-Related Kinase 2; Protein Phosphatase 1, Regulatory Subunit 111; Serine/Threonine-Protein Kinase Nek2; NimA-Related Protein Kinase; NimA-Like Protein Kinase 1; EC 2.7.11.1; Never In Mitosis A-Related Kinase; EC 2.7.11; HsPK 21; HSPK 21; HsPK21.
Calculated MW	Calculated MW: 52 kDa, Observed MW: 48 kDa
Uniprot ID	P51955
Gene ID	4751
Background	Protein kinase that is involved in mitotic regulation. Integral component of the mitotic spindle-assembly checkpoint which is necessary for proper chromosome segregation during metaphase-anaphase transition. Required for association of MAD2L1 to kinetochore.



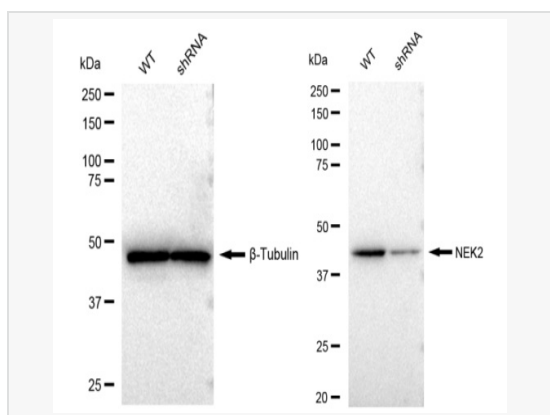
Flow cytometric analysis of NEK2 expression in HepG2 cells using NEK2 antibody (R021848, 1:2,000). Green, isotype control; red, NEK2.



Immunocytochemical staining of HepG2 cells with NEK2 antibody (R021848, 1:1,000). Nuclei were stained blue with DAPI; NEK2 was stained magenta with Alexa Fluor® 647. Images were taken using Leica stellaris 5. Protein abundance based on laser Intensity and smart gain: High. Scale bar: 20 µm.



Western blotting analysis using NEK2 antibody (R021848). Total cell lysates (30 µg) from various cell lines were loaded and separated by SDS-PAGE. The blot was incubated with NEK2 antibody (R021848, 1:5,000) and HRP-conjugated goat anti-rabbit secondary antibody (1:20,000) respectively. Image was developed using ECL Substrate Kit.



Western blotting analysis using NEK2 antibody (R021848). NEK2 expression in wild type (WT) and NEK2 shRNA knockdown (KD) HeLa cells with 30 µg of total cell lysates. β-Tubulin serves as a loading control. The blot was incubated with NEK2 antibody (R021848, 1:5,000) and HRP-conjugated goat anti-rabbit secondary antibody (1:20,000) respectively. Image was developed using ECL Substrate Kit.