

[KD Validated] Anti-HAT1 Rabbit mAb

Purified Recombinant Rabbit Monoclonal Antibody

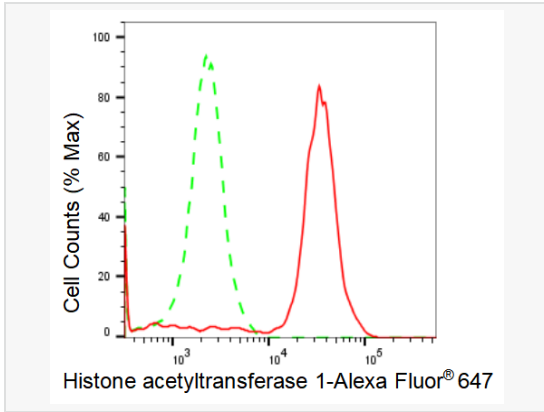
Catalog # R021847

Product Information

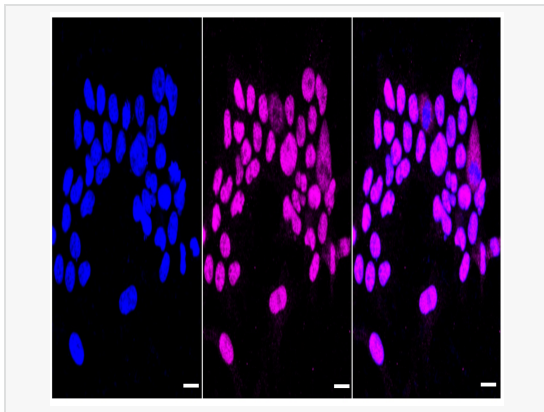
Application	WB, FC, IF (Cell)/ICC
Reactivity	Human, Mouse, Rat
Dilution	WB 1:1,000~1:5,000; FC 1:200~1:2,000; IF 1:100~1:1,000
Host	Rabbit
Clonality	Monoclonal
Clone No.	77T45T67
Isotype	IgG
Label	Unconjugated
Immunogen	A synthesized peptide derived from human KAT1 / HAT1
Format	Affinity purified monoclonal antibody supplied in PBS with 0.02% sodium azide and 50% glycerol, pH 7.3.
Storage	Shipped on wet ice. Store at -20°C. Stable for 12 months from date of receipt. Aliquoting is unnecessary for -20°C storage.
Precautions	[KD Validated] Anti-HAT1 Rabbit mAb [77T45T67] is for research use only and not for use in diagnostic or therapeutic procedures.

Protein Information

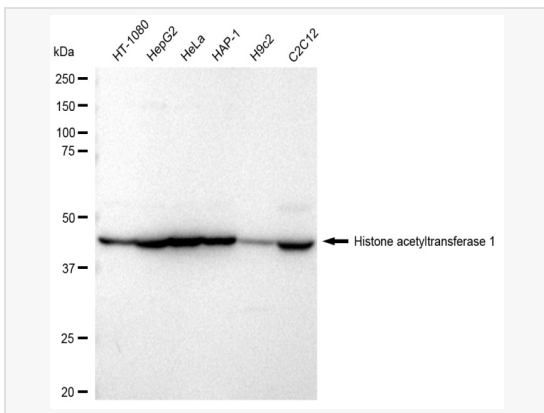
Synonyms	HAT1; Histone Acetyltransferase 1; KAT1; Histone Acetyltransferase Type B Catalytic Subunit; EC 2.3.1.48.
Calculated MW	Calculated MW: 50 kDa, Observed MW: 45 kDa
Uniprot ID	O14929
Gene ID	8520
Background	Acetylates soluble but not nucleosomal histone H4 at 'Lys-5' (H4K5ac) and 'Lys-12' (H4K12ac) and, to a lesser extent, acetylates histone H2A at 'Lys-5' (H2AK5ac). Has intrinsic substrate specificity that modifies lysine in recognition sequence GXGKXG.



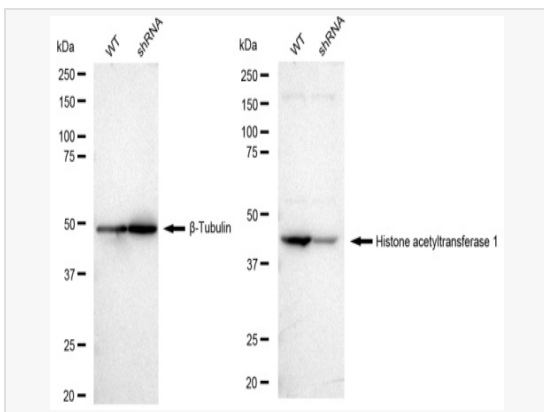
Flow cytometric analysis of Histone acetyltransferase 1 expression in HeLa cells using Histone acetyltransferase 1 antibody (R021847, 1:2,000). Green, isotype control; red, Histone acetyltransferase 1.



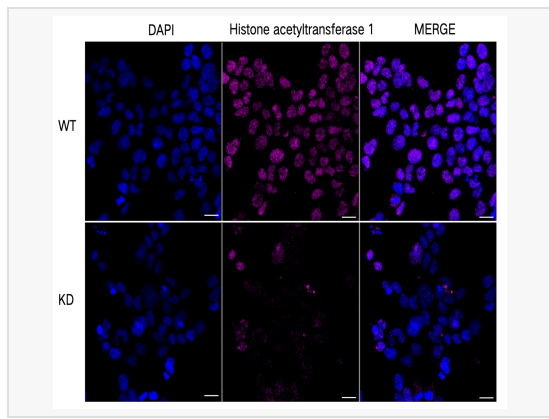
Immunocytochemical staining of HeLa cells with Histone acetyltransferase 1 antibody (R021847, 1:1,000). Nuclei were stained blue with DAPI; Histone acetyltransferase 1 was stained magenta with Alexa Fluor® 647. Images were taken using Leica stellaris 5. Protein abundance based on laser Intensity and smart gain: Medium. Scale bar: 20 μ m.



Western blotting analysis using Histone acetyltransferase 1 antibody (R021847). Total cell lysates (30 μ g) from various cell lines were loaded and separated by SDS-PAGE. The blot was incubated with Histone acetyltransferase 1 antibody (R021847, 1:5,000) and HRP-conjugated goat anti-rabbit secondary antibody (1:20,000) respectively. Image was developed using ECL Substrate Kit.



Western blotting analysis using Histone acetyltransferase 1 antibody (R021847). Histone acetyltransferase 1 expression in wild type (WT) and histone acetyltransferase 1 shRNA knockdown (KD) HeLa cells with 30 μ g of total cell lysates. β -Tubulin serves as a loading control. The blot was incubated with Histone acetyltransferase 1 antibody (R021847, 1:5,000) and HRP-conjugated goat anti-rabbit secondary antibody (1:20,000) respectively. Image was developed using ECL Substrate Kit.



Immunocytochemical staining of HeLa cells using Histone acetyltransferase 1 antibody (R021847, 1:1,000), Top panel: wild-type (WT); Bottom panel: Histone acetyltransferase 1 shRNA knockdown (KD). Nuclei were stained blue with DAPI; Histone acetyltransferase 1 was stained magenta with Alexa Fluor® 647. Scale bar, 20 μ m.