

## [KD Validated] Anti-TAX1BP1 Rabbit mAb

Purified Recombinant Rabbit Monoclonal Antibody

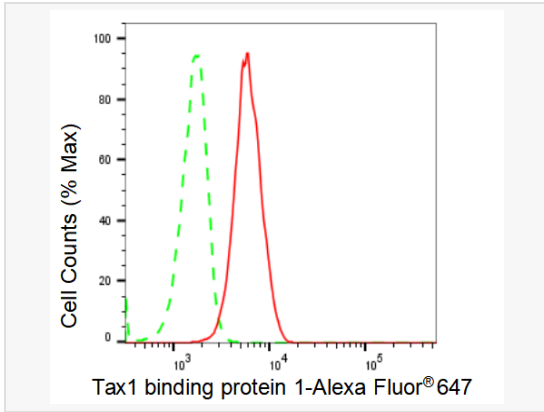
Catalog # R021843

### Product Information

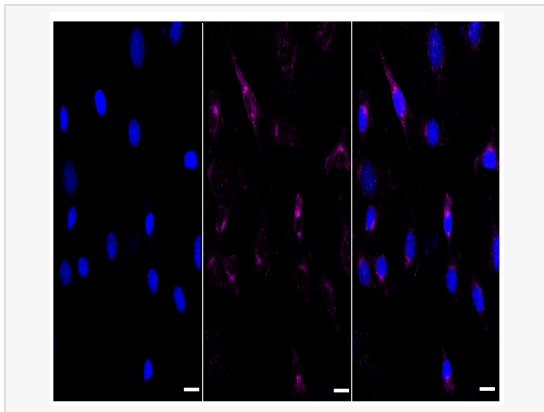
Application	WB, FC, IF (Cell)/ICC
Reactivity	Human, Mouse, Rat
Dilution	WB 1:1,000~1:5,000; FC 1:200~1:2,000; IF 1:100~1:1,000
Host	Rabbit
Clonality	Monoclonal
Clone No.	28F38A94
Isotype	IgG
Label	Unconjugated
Immunogen	A synthesized peptide derived from human TRAF6BP
Format	Affinity purified monoclonal antibody supplied in PBS with 0.02% sodium azide and 50% glycerol, pH 7.3.
Storage	Shipped on wet ice. Store at -20°C. Stable for 12 months from date of receipt. Aliquoting is unnecessary for -20°C storage.
Precautions	[KD Validated] Anti-TAX1BP1 Rabbit mAb [28F38A94] is for research use only and not for use in diagnostic or therapeutic procedures.

### Protein Information

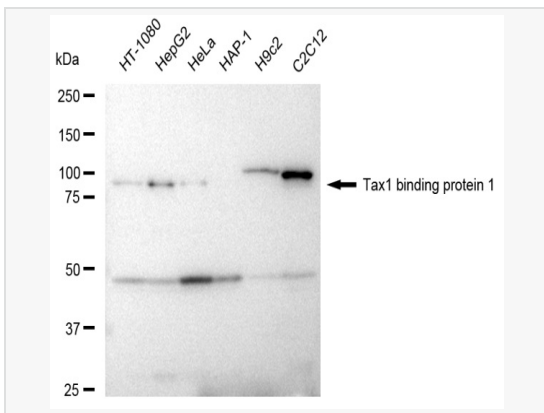
Synonyms	TAX1BP1; Tax1 Binding Protein 1; CALCOCO3; TXBP151; Tax1 (Human T-Cell Leukemia Virus Type I) Binding Protein 1; Tax1-Binding Protein 1; TRAF6-Binding Protein; T6BP.
Calculated MW	Calculated MW: 91 kDa, Observed MW: 91 kDa
Uniprot ID	Q86VP1
Gene ID	8887
Background	This gene encodes a HTLV-1 tax1 binding protein. The encoded protein interacts with TNFAIP3, and inhibits TNF-induced apoptosis by mediating the TNFAIP3 anti-apoptotic activity. Degradation of this protein by caspase-3-like family proteins is associated with apoptosis induced by TNF. This protein may also have a role in the inhibition of inflammatory signaling pathways. Alternatively spliced transcript variants encoding different isoforms have been found for this gene.[provided by RefSeq, May 2011]
Tissue Location	TAX1BP1



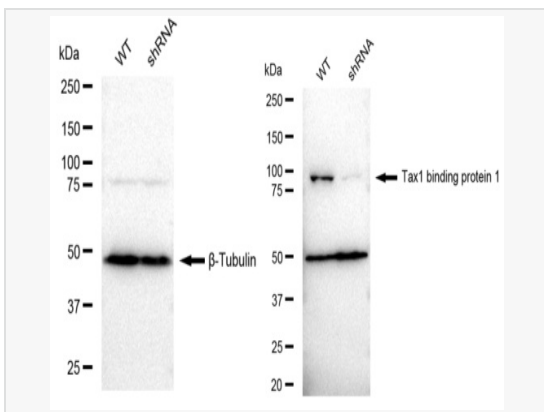
Flow cytometric analysis of Tax1 binding protein 1 expression in C2C12 cells using Tax1 binding protein 1 antibody (R021843, 1:2,000). Green, isotype control; red, Tax1 binding protein 1.



Immunocytochemical staining of C2C12 cells with Tax1 binding protein 1 antibody (R021843, 1:1,000). Nuclei were stained blue with DAPI; Tax1 binding protein 1 was stained magenta with Alexa Fluor® 647. Images were taken using Leica stellaris 5. Protein abundance based on laser Intensity and smart gain: Medium. Scale bar: 20 µm.



Western blotting analysis using Tax1 binding protein 1 antibody (R021843). Total cell lysates (30 µg) from various cell lines were loaded and separated by SDS-PAGE. The blot was incubated with Tax1 binding protein 1 antibody (R021843, 1:5,000) and HRP-conjugated goat anti-rabbit secondary antibody (1:20,000) respectively. Image was developed using ECL Substrate Kit.



Western blotting analysis using Tax1 binding protein 1 antibody (R021843). Tax1 binding protein 1 expression in wild type (WT) and tax1 binding protein 1 shRNA knockdown (KD) HeLa cells with 30 µg of total cell lysates. β-Tubulin serves as a loading control. The blot was incubated with Tax1 binding protein 1 antibody (R021843, 1:5,000) and HRP-conjugated goat anti-rabbit secondary antibody (1:20,000) respectively. Image was developed using ECL Substrate Kit.