

[KD Validated] Anti-CSNK1E Mouse mAb

Purified Recombinant Mouse Monoclonal Antibody

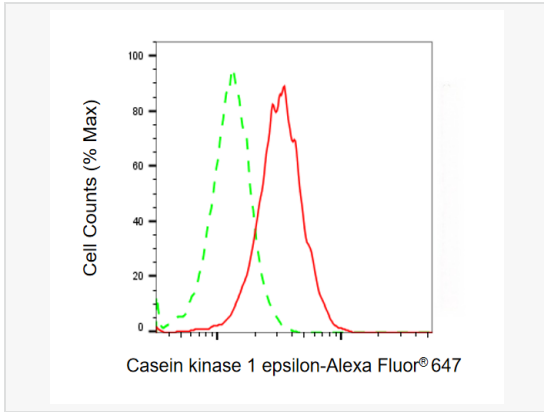
Catalog # M021789

Product Information

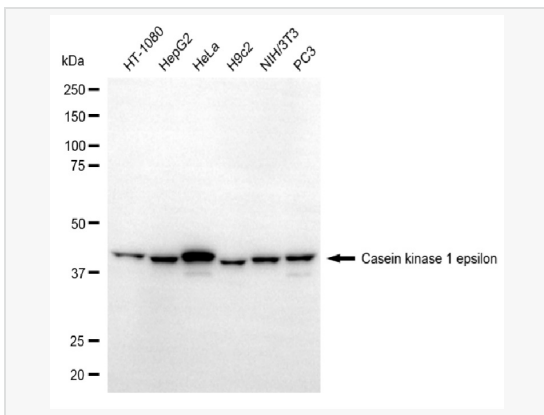
Application	WB, FC, IF (Cell)/ICC
Reactivity	Human, Mouse, Rat
Dilution	WB 1:1,000~1:2,500; FC 1:200~1:2,000; IF 1:100~1:1,000
Host	Mouse
Clonality	Monoclonal
Clone No.	76E99G25
Isotype	IgG
Label	Unconjugated
Immunogen	Recombinant protein of human CSNK1E
Format	Affinity purified monoclonal antibody supplied in PBS with 0.02% sodium azide and 50% glycerol, pH 7.3.
Storage	Shipped on wet ice. Store at -20°C. Stable for 12 months from date of receipt. Aliquoting is unnecessary for -20°C storage.
Precautions	[KD Validated] Anti-CSNK1E Mouse mAb [76E99G25] is for research use only and not for use in diagnostic or therapeutic procedures.

Protein Information

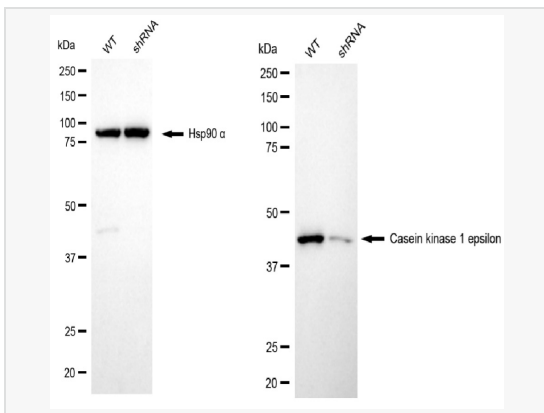
Synonyms	CSNK1E; Casein Kinase 1 Epsilon; CKIepsilon; HCKIE; CKIE; Casein Kinase I Isoform Epsilon; EC 2.7.11.1; Casein Kinase 1, Epsilon; CKI-Epsilon; EC 2.7.11; CKIe.
Calculated MW	Calculated MW: 47 kDa, Observed MW: 43 kDa
Uniprot ID	P49674
Gene ID	1454



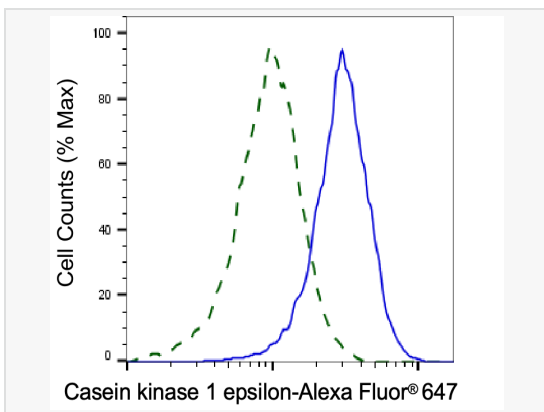
Flow cytometric analysis of Casein kinase 1 epsilon expression in HT-1080 cells using Casein kinase 1 epsilon antibody (M021789, 1:2,000). Green, isotype control; red, Casein kinase 1 epsilon.



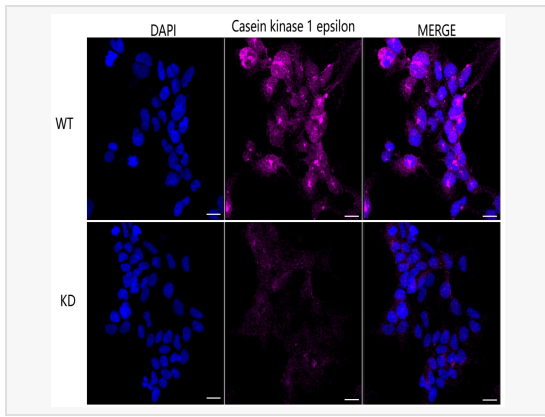
Western blotting analysis using casein kinase 1 epsilon antibody (M021789). Total cell lysates (30 µg) from various cell lines were loaded and separated by SDS-PAGE. The blot was incubated with casein kinase 1 epsilon antibody (M021789, 1:2,500) and HRP-conjugated goat anti-mouse secondary antibody (1:20,000) respectively. Image was developed using ECL Substrate Kit.



Western blotting analysis using casein kinase 1 epsilon antibody (M021789). Casein kinase 1 epsilon expression in wild type (WT) and casein kinase 1 epsilon (CSNK1E) shRNA knockdown (KD) HeLa cells with 20 µg of total cell lysates. Hsp90 α serves as a loading control. The blot was incubated with casein kinase 1 epsilon antibody (M021789, 1:2,500) and HRP-conjugated goat anti-mouse secondary antibody (1:20,000) respectively. Image was developed using ECL Substrate Kit.



Validation of Casein kinase 1 epsilon knockdown using flow cytometry. Wild-type(WT, Blue) and knockdown(KD, Green) HeLa cells were stained with Casein kinase 1 epsilon antibody (M021789, 1:2,000) and analyzed using BD flow cytometer.



Immunocytochemical staining of HeLa cells using Casein kinase 1 epsilon antibody (M021789, 1:1,000), Top panel: wild-type (WT); Bottom panel: Casein kinase 1 epsilon shRNA knockdown (KD). Nuclei were stained blue with DAPI; Casein kinase 1 epsilon was stained magenta with Alexa Fluor® 647. Scale bar, 20 μ m.