

[KD Validated] Anti-PAK2 Rabbit mAb

Purified Recombinant Rabbit Monoclonal Antibody

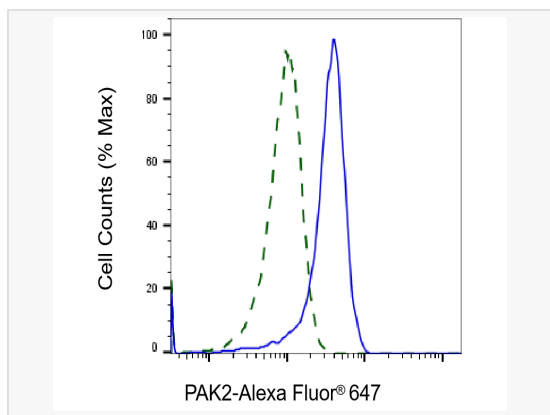
Catalog # R021746

Product Information

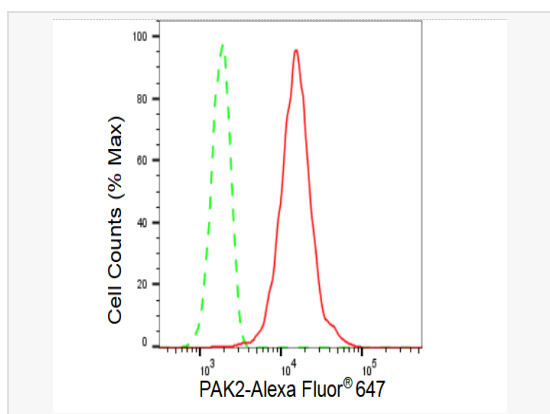
Application	WB, FC, IF (Cell)/ICC
Reactivity	Human, Mouse, Rat
Dilution	WB 1:1,000~1:5,000; FC 1:200~1:2,000; IF 1:100~1:1,000
Host	Rabbit
Clonality	Monoclonal
Clone No.	17H62C32
Isotype	IgG
Label	Unconjugated
Immunogen	A synthesized peptide derived from human PAK2
Format	Affinity purified monoclonal antibody supplied in PBS with 0.02% sodium azide and 50% glycerol, pH 7.3.
Storage	Shipped on wet ice. Store at -20°C. Stable for 12 months from date of receipt. Aliquoting is unnecessary for -20°C storage.
Precautions	[KD Validated] Anti-PAK2 Rabbit mAb [17H62C32] is for research use only and not for use in diagnostic or therapeutic procedures.

Protein Information

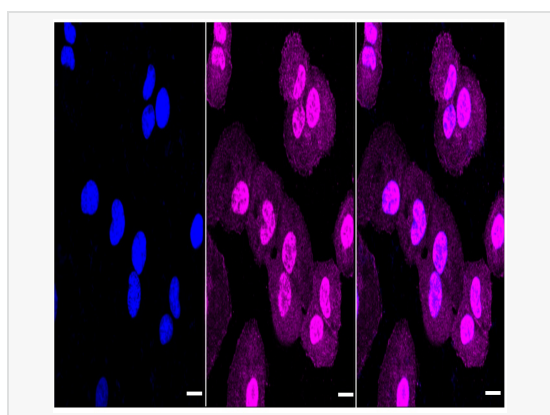
Synonyms	PAK2; P21 (RAC1) Activated Kinase 2; PAK65; S6/H4 Kinase; P21 Protein (Cdc42/Rac)-Activated Kinase 2; Serine/Threonine-Protein Kinase PAK 2; P21 (CDKN1A)-Activated Kinase 2; P21-Activated Kinase 2; EC 2.7.11.1; Gamma-PAK; PAKgamma; PAK-2; P58; EC 2.7.11; PAKGAMMA; KNO2.
Calculated MW	Calculated MW: 58 kDa, Observed MW: 61 kDa
Uniprot ID	Q13177
Gene ID	5062
Background	The activated kinase acts on a variety of targets. Phosphorylates ribosomal protein S6, histone H4 and myelin basic protein. Full length PAK 2 stimulates cell survival and cell growth. The process is, at least in part, mediated by phosphorylation and inhibition of pro-apoptotic BAD.



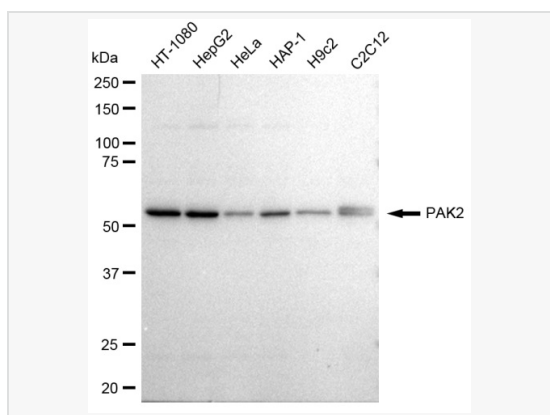
Validation of PAK2 knockdown using flow cytometry. Wild-type(WT, Blue) and knockdown(KD, Green) HeLa cells were stained with PAK2 antibody (R021746, 1:2,000) and analyzed using BD flow cytometer.



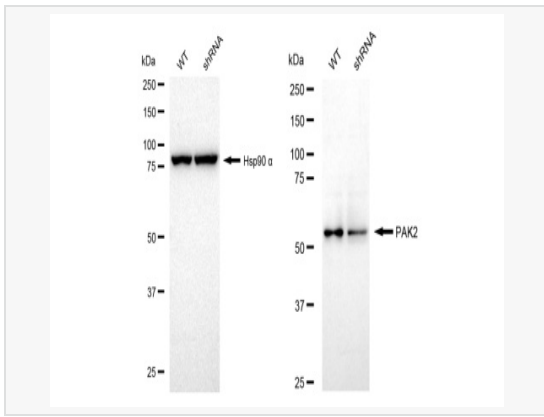
Flow cytometric analysis of PAK2 expression in HT-1080 cells using PAK2 antibody (R021746, 1:2,000). Green, isotype control; red, PAK2.



Immunocytochemical staining of HT-1080 cells with PAK2 antibody (R021746, 1:1,000). Nuclei were stained blue with DAPI; PAK2 was stained magenta with Alexa Fluor® 647. Images were taken using Leica stellaris 5. Protein abundance based on laser Intensity and smart gain: High. Scale bar: 20 μ m.



Western blotting analysis using PAK2 antibody (R021746). Total cell lysates (30 μ g) from various cell lines were loaded and separated by SDS-PAGE. The blot was incubated with PAK2 antibody (R021746, 1:5,000) and HRP-conjugated goat anti-rabbit secondary antibody (1:20,000) respectively. Image was developed using ECL Substrate Kit.



Western blotting analysis using PAK2 antibody (R021746). PAK2 expression in wild type (WT) and PAK2 shRNA knockdown (KD) HeLa cells with 30 μ g of total cell lysates. Hsp90 α serves as a loading control. The blot was incubated with PAK2 antibody (R021746, 1:5,000) and HRP-conjugated goat anti-rabbit secondary antibody (1:20,000) respectively. Image was developed using ECL Substrate Kit.