

[KD Validated] Anti-CTNND1 Rabbit mAb

Purified Recombinant Rabbit Monoclonal Antibody

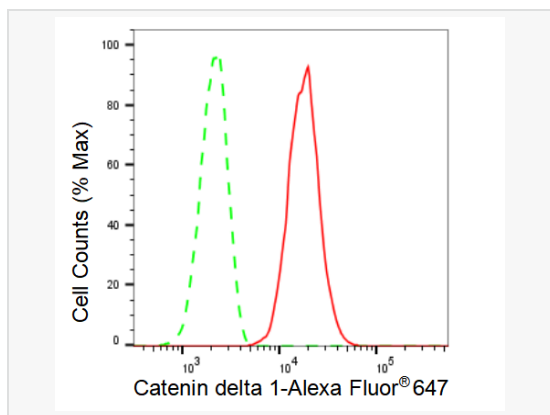
Catalog # R021707

Product Information

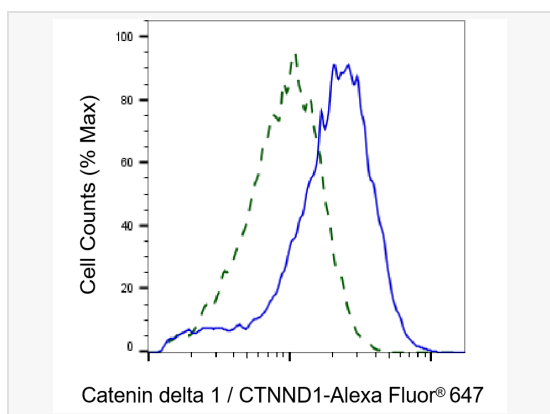
Application	WB, FC, IF (Cell)/ICC, IHC-P/IF (Tissue-P)
Reactivity	Human, Mouse, Rat
Dilution	WB 1:1,000~1:5,000; FC 1:200~1:2,000; IF 1:100~1:1,000; IHC-P 1:100~1:200
Host	Rabbit
Clonality	Monoclonal
Clone No.	49L78T22
Isotype	IgG
Label	Unconjugated
Immunogen	A synthesized peptide derived from human delta 1 Catenin/p120 Catenin
Format	Affinity purified monoclonal antibody supplied in PBS with 0.02% sodium azide and 50% glycerol, pH 7.3.
Storage	Shipped on wet ice. Store at -20°C. Stable for 12 months from date of receipt. Aliquoting is unnecessary for -20°C storage.
Precautions	[KD Validated] Anti-CTNND1 Rabbit mAb [49L78T22] is for research use only and not for use in diagnostic or therapeutic procedures.

Protein Information

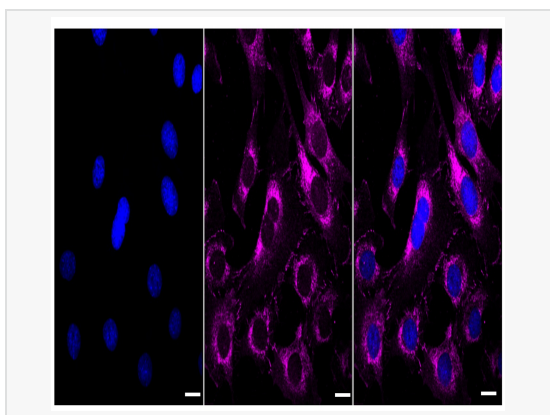
Synonyms	CTNND1; Catenin Delta 1; KIAA0384; P120; Catenin (Cadherin-Associated Protein), Delta 1; Cadherin-Associated Src Substrate; Catenin Delta-1; P120 Catenin; P120CAS; P120CTN; CTNND; CAS; P120(CAS); P120(CTN); P120(Ctn); P120(Cas); P120cas; P120ctn; BCDS2.
Calculated MW	Calculated MW: 108 kDa, Observed MW: 105 kDa
Uniprot ID	O60716
Gene ID	1500
Background	This gene encodes a member of the Armadillo protein family, which function in adhesion between cells and signal transduction. Multiple translation initiation codons and alternative splicing result in many different isoforms being translated. Not all of the full-length natures of the described transcript variants have been determined. Read-through transcription also exists between this gene and the neighboring upstream thioredoxin-related transmembrane protein 2 (TMX2) gene. [provided by RefSeq, Dec 2010]
Cellular Location	Cell junction Adherens junction Cytoplasm Nucleus Cell membrane Cell junction Interaction with GLIS2 promotes nuclear translocation (By similarity). Detected at cell-cell contacts (PubMed:15240885, PubMed:17047063). NANOS1 induces its translocation from sites of cell-cell contact to the cytoplasm (PubMed:17047063). CDH1 enhances cell membrane localization (PubMed:15240885). Localizes to cell-cell contacts as keratinocyte differentiation progresses (By similarity). Isoform 1A Nucleus Isoform 2A Nucleus Isoform 3A Nucleus Isoform 4A Cytoplasm Isoform 1AB Cytoplasm



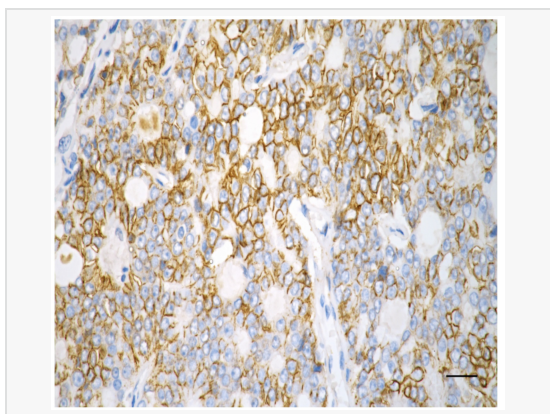
Flow cytometric analysis of Catenin delta 1 expression in C2C12 cells using Catenin delta 1 antibody (R021707, 1:2,000). Green, isotype control; red, Catenin delta 1.



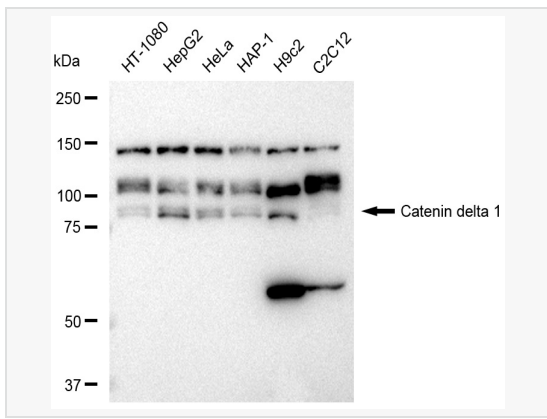
Validation of Catenin delta 1 / CTNND1 knockdown using flow cytometry. Wild-type(WT, Blue) and knockdown(KD, Green) HeLa cells were stained with Catenin delta 1 / CTNND1 antibody (R021707, 1:2,000) and analyzed using BD flow cytometer.



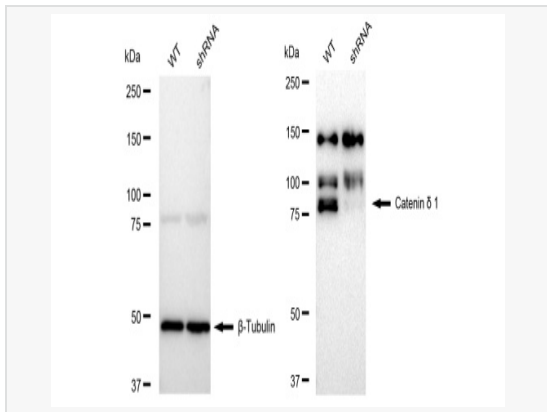
Immunocytochemical staining of C2C12 cells with Catenin delta 1 antibody (R021707, 1:1,000). Nuclei were stained blue with DAPI; Catenin delta 1 was stained magenta with Alexa Fluor® 647. Images were taken using Leica stellaris 5. Protein abundance based on laser Intensity and smart gain: Medium. Scale bar: 20 µm.



Immunohistochemistry was performed on paraffin-embedded human prostatic adenocarcinoma using catenin delta 1 antibody (R021707, 1:200). Antigen retrieval was done in sodium citrate buffer (pH 6.0). DAB was used for detection, with hematoxylin counterstaining. Images were acquired using a Nikon Ci-L Plus microscope (40× objective). Scale bar: 25 µm.



Western blotting analysis using Catenin delta 1 antibody (R021707). Total cell lysates (30 μ g) from various cell lines were loaded and separated by SDS-PAGE. The blot was incubated with Catenin delta 1 antibody (R021707, 1:5,000) and HRP-conjugated goat anti-rabbit secondary antibody (1:20,000) respectively. Image was developed using ECL Substrate Kit.



Western blotting analysis using Catenin δ 1 antibody (R021707). Catenin δ 1 expression in wild type (WT) and Catenin δ 1 shRNA knockdown (KD) HeLa cells with 30 μ g of total cell lysates. β -Tubulin serves as a loading control. The blot was incubated with Catenin δ 1 antibody (R021707, 1:5,000) and HRP-conjugated goat anti-rabbit secondary antibody (1:20,000) respectively. Image was developed using ECL Substrate Kit.