

[KD Validated] Anti-EPHB3 Rabbit mAb

Purified Recombinant Rabbit Monoclonal Antibody

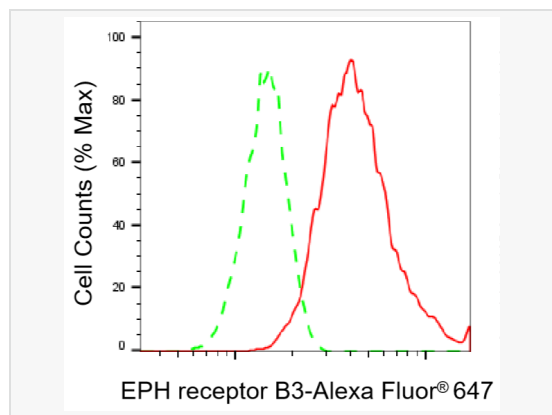
Catalog # R021695

Product Information

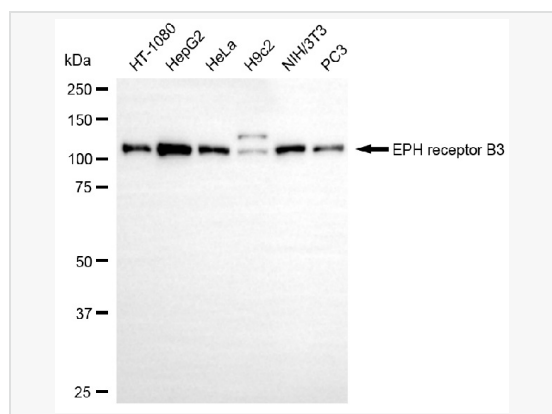
Application	WB, FC
Reactivity	Human, Mouse, Rat
Dilution	WB 1:1,000~1:5,000; FC 1:200~1:2,000
Host	Rabbit
Clonality	Monoclonal
Clone No.	82S92C06
Isotype	IgG
Label	Unconjugated
Immunogen	A synthesized peptide derived from human Eph receptor B3
Format	Affinity purified monoclonal antibody supplied in PBS with 0.02% sodium azide and 50% glycerol, pH 7.3.
Storage	Shipped on wet ice. Store at -20°C. Stable for 12 months from date of receipt. Aliquoting is unnecessary for -20°C storage.
Precautions	[KD Validated] Anti-EPHB3 Rabbit mAb [82S92C06] is for research use only and not for use in diagnostic or therapeutic procedures.

Protein Information

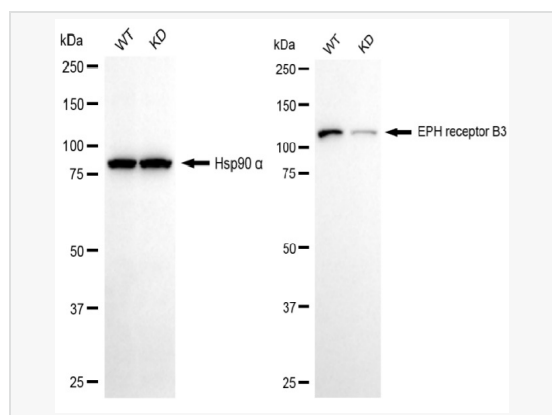
Synonyms	EPHB3; EPH Receptor B3; HEK2; TYRO6; ETK2; Tyrosine-Protein Kinase TYRO6; EPH-Like Tyrosine Kinase 2; Ephrin Type-B Receptor 3; Embryonic Kinase 2; EC 2.7.10.1; EK2; Human Embryo Kinase 2; EPH-Like Kinase 2; EC 2.7.10; Tyro6; EphB3; Hek2.
Calculated MW	Calculated MW: 110 kDa; Observed MW: 110 kDa
Uniprot ID	P54753
Gene ID	2049
Background	Ephrin receptors and their ligands, the ephrins, mediate numerous developmental processes, particularly in the nervous system. Based on their structures and sequence relationships, ephrins are divided into the ephrin-A (EFNA) class, which are anchored to the membrane by a glycosylphosphatidylinositol linkage, and the ephrin-B (EFNB) class, which are transmembrane proteins. The Eph family of receptors are divided into two groups based on the similarity of their extracellular domain sequences and their affinities for binding ephrin-A and ephrin-B ligands. Ephrin receptors make up the largest subgroup of the receptor tyrosine kinase (RTK) family. This gene encodes a receptor for ephrin-B family members. [provided by RefSeq, Mar 2010]
Cellular Location	Membrane.
Tissue Location	Ubiquitous.



Flow cytometric analysis of EPH receptor B3 expression in C2C12 cells using EPH receptor B3 antibody (R021695, 1:2,000). Green, isotype control; red, EPH receptor B3.



Western blotting analysis using EPH receptor B3 antibody (R021695). Total cell lysates (30 μ g) from various cell lines were loaded and separated by SDS-PAGE. The blot was incubated with EPH receptor B3 antibody (R021695, 1:5,000) and HRP-conjugated goat anti-rabbit secondary antibody (1:20,000) respectively. Image was developed using ECL Substrate Kit.



Western blotting analysis using EPH receptor B3 antibody (R021695). EPH receptor B3 expression in wild-type (WT) and EPH receptor B3 (EPHB3) knockdown (KD) HeLa cells with 20 μ g of total cell lysates. Hsp90 α serves as a loading control. The blot was incubated with EPH receptor B3 antibody (R021695, 1:5,000) and HRP-conjugated goat anti-rabbit secondary antibody (1:20,000) respectively. Image was developed using ECL Substrate Kit.