

[KD Validated] Anti-EIF3E Rabbit mAb

Purified Recombinant Rabbit Monoclonal Antibody

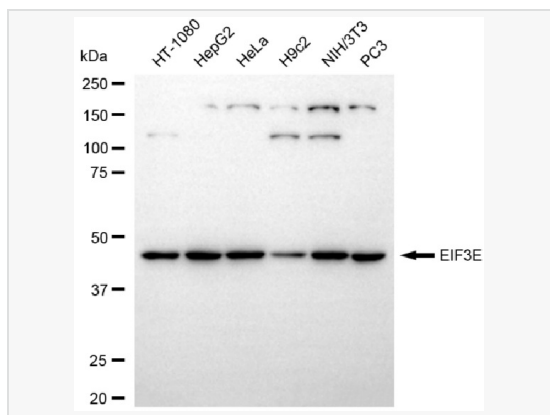
Catalog # R021644

Product Information

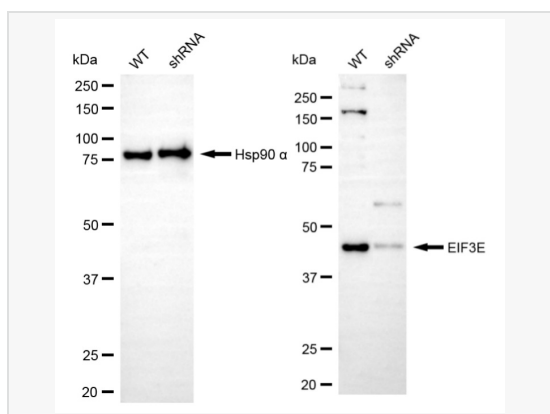
Application	WB, FC
Reactivity	Human, Mouse, Rat
Dilution	WB 1:1,000~1:5,000; FC 1:200~1:2,000
Host	Rabbit
Clonality	Monoclonal
Clone No.	22A25T73
Isotype	IgG
Label	Unconjugated
Immunogen	A synthesized peptide derived from human eIF3e
Format	Affinity purified monoclonal antibody supplied in PBS with 0.02% sodium azide and 50% glycerol, pH 7.3.
Storage	Shipped on wet ice. Store at -20°C. Stable for 12 months from date of receipt. Aliquoting is unnecessary for -20°C storage.
Precautions	[KD Validated] Anti-EIF3E Rabbit mAb [22A25T73] is for research use only and not for use in diagnostic or therapeutic procedures.

Protein Information

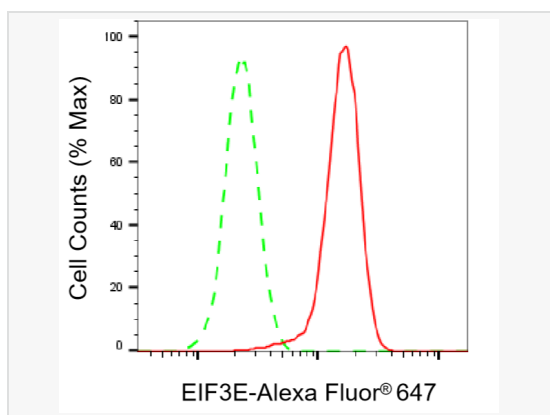
Synonyms	EIF3E; Eukaryotic Translation Initiation Factor 3 Subunit E; EIF3-P48; EIF3S6; INT6; Eukaryotic Translation Initiation Factor 3, Subunit 6 48kDa; Eukaryotic Translation Initiation Factor 3 Subunit 6; Viral Integration Site Protein INT-6 Homolog; EIF-3 P48; Eukaryotic Translation Initiation Factor 3, Subunit 6 (48kD); Murine Mammary Tumor Integration Site 6 (Oncogene Homolog); Eukaryotic Translation Initiation Factor 3, Subunit E; Mammary Tumor-Associated Protein INT6; EIF3-P46; EIF3e.
Calculated MW	Calculated MW: 52 kDa; Observed MW: 45 kDa
Uniprot ID	P60228
Gene ID	3646
Background	Enables protein N-terminus binding activity. Contributes to translation initiation factor activity. Involved in positive regulation of mRNA binding activity; regulation of gene expression; and translational initiation. Located in cytosol and nucleus. Part of eukaryotic translation initiation factor 3 complex. Colocalizes with PML body.



Western blotting analysis using EIF3E antibody (R021644). Total cell lysates (30 μ g) from various cell lines were loaded and separated by SDS-PAGE. The blot was incubated with EIF3E antibody (R021644, 1:5,000) and HRP-conjugated goat anti-rabbit secondary antibody (1:20,000) respectively. Image was developed using ECL Substrate Kit.



Western blotting analysis using EIF3E antibody (R021644). EIF3E expression in wild-type (WT) and EIF3E shRNA knockdown (KD) HSHC cells with 20 μ g of total cell lysates. Hsp90 α serves as a loading control. The blot was incubated with EIF3E antibody (R021644, 1:5,000) and HRP-conjugated goat anti-rabbit secondary antibody (1:20,000) respectively. Image was developed using ECL Substrate Kit.



Flow cytometric analysis of EIF3E expression in HeLa cells using EIF3E antibody (R021644, 1:2,000). Green, isotype control; red, EIF3E.