

## [KD Validated] Anti-HIP1 Rabbit mAb

Purified Recombinant Rabbit Monoclonal Antibody

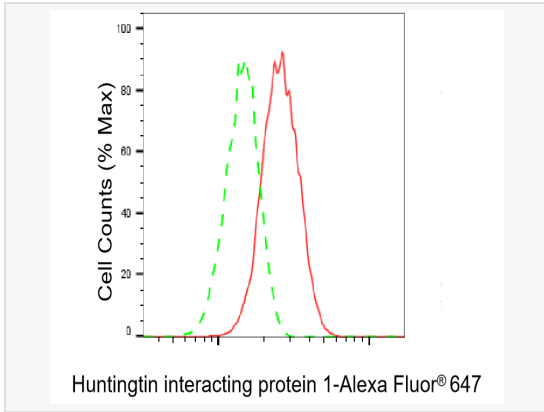
Catalog # R021640

### Product Information

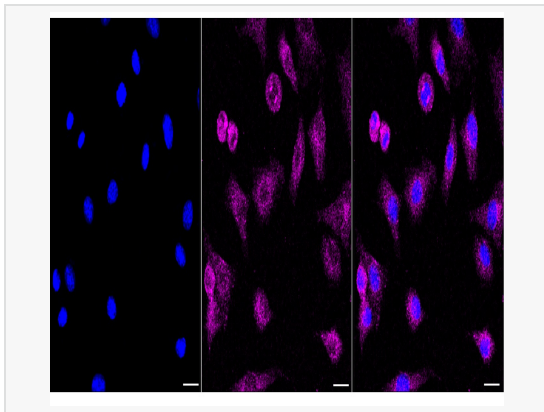
Application	WB, FC, IF (Cell)/ICC
Reactivity	Human, Mouse, Rat
Dilution	WB 1:1,000~1:5,000; FC 1:200~1:2,000; IF 1:100~1:1,000
Host	Rabbit
Clonality	Monoclonal
Clone No.	60O91Q67
Isotype	IgG
Label	Unconjugated
Immunogen	A synthesized peptide derived from human HIP1
Format	Affinity purified monoclonal antibody supplied in PBS with 0.02% sodium azide and 50% glycerol, pH 7.3.
Storage	Shipped on wet ice. Store at -20°C. Stable for 12 months from date of receipt. Aliquoting is unnecessary for -20°C storage.
Precautions	[KD Validated] Anti-HIP1 Rabbit mAb [60O91Q67] is for research use only and not for use in diagnostic or therapeutic procedures.

### Protein Information

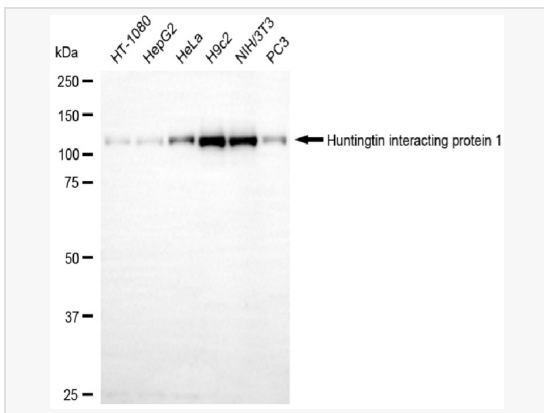
Synonyms	HIP1; Huntingtin Interacting Protein 1; ILWEQ; Huntingtin-Interacting Protein 1; Huntingtin-Interacting Protein I; HIP-I; SHONGamma; SHONbeta; HIP-1; SHON.
Calculated MW	Calculated MW: 116 kDa; Observed MW: 116 kDa
Uniprot ID	O00291
Gene ID	3092
Background	Plays a role in clathrin-mediated endocytosis and trafficking. Involved in regulating AMPA receptor trafficking in the central nervous system in an NMDA-dependent manner. Enhances androgen receptor (AR)-mediated transcription.
Cellular Location	Cytoplasm. Nucleus. Endomembrane system. Cytoplasmic vesicle > clathrin-coated vesicle membrane. Shuttles between cytoplasm and nucleus. Nuclear translocation can be induced by AR.
Tissue Location	Ubiquitously expressed with the highest level in brain. Expression is up-regulated in prostate and colon cancer.



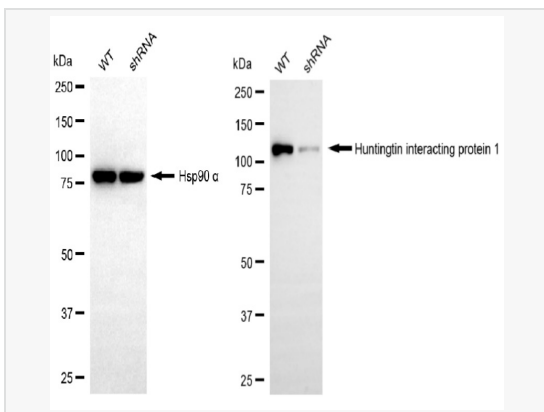
Flow cytometric analysis of Huntingtin interacting protein 1 expression in C2C12 cells using Huntingtin interacting protein 1 antibody (R021640, 1:2,000). Green, isotype control; red, Huntingtin interacting protein 1.



Immunocytochemical staining of C2C12 cells with Huntingtin interacting protein 1 antibody (R021640, 1:1,000). Nuclei were stained blue with DAPI; Huntingtin interacting protein 1 was stained magenta with Alexa Fluor® 647. Images were taken using Leica stellaris 5. Protein abundance based on laser Intensity and smart gain: Low. Scale bar, 20 µm.



Western blotting analysis using huntingtin interacting protein 1 antibody (R021640). Total cell lysates (30 µg) from various cell lines were loaded and separated by SDS-PAGE. The blot was incubated with huntingtin interacting protein 1 antibody (R021640, 1:5,000) and HRP-conjugated goat anti-rabbit secondary antibody (1:20,000) respectively. Image was developed using ECL Substrate Kit.



Western blotting analysis using huntingtin interacting protein 1 antibody (R021640). Huntingtin interacting protein 1 expression in wild-type (WT) and huntingtin interacting protein 1 (HIP1) shRNA knockdown (KD) HSHC cells with 20 µg of total cell lysates. Hsp90 α serves as a loading control. The blot was incubated with huntingtin interacting protein 1 antibody (R021640, 1:5,000) and HRP-conjugated goat anti-rabbit secondary antibody (1:20,000) respectively. Image was developed using ECL Substrate Kit.