

[KD Validated] Anti-CSNK2B Rabbit mAb

Purified Recombinant Rabbit Monoclonal Antibody

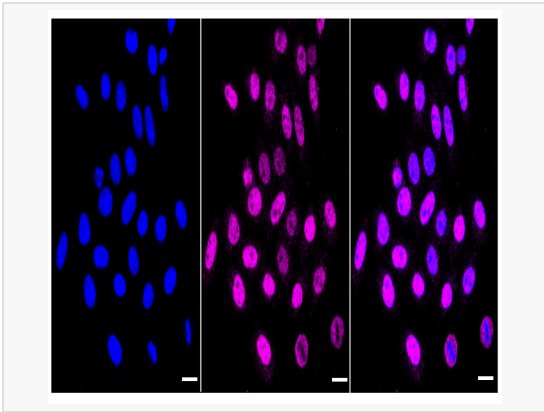
Catalog # R021627

Product Information

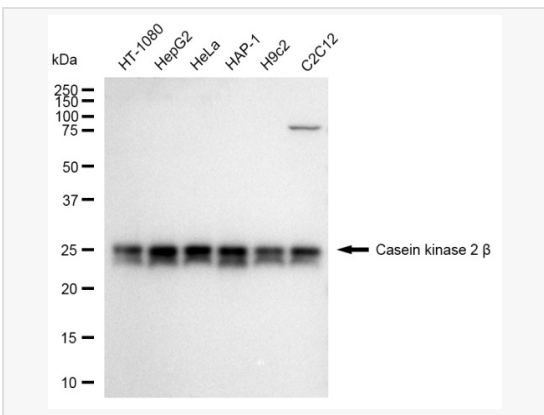
Application	WB, IF (Cell)/ICC
Reactivity	Human, Mouse, Rat
Dilution	WB 1:1,000~1:5,000; IF 1:100~1:1,000
Host	Rabbit
Clonality	Monoclonal
Clone No.	25L27O56
Isotype	IgG
Label	Unconjugated
Immunogen	A synthesized peptide derived from human Casein Kinase 2 beta
Format	Affinity purified monoclonal antibody supplied in PBS with 0.02% sodium azide and 50% glycerol, pH 7.3.
Storage	Shipped on wet ice. Store at -20°C. Stable for 12 months from date of receipt. Aliquoting is unnecessary for -20°C storage.
Precautions	[KD Validated] Anti-CSNK2B Rabbit mAb [25L27O56] is for research use only and not for use in diagnostic or therapeutic procedures.

Protein Information

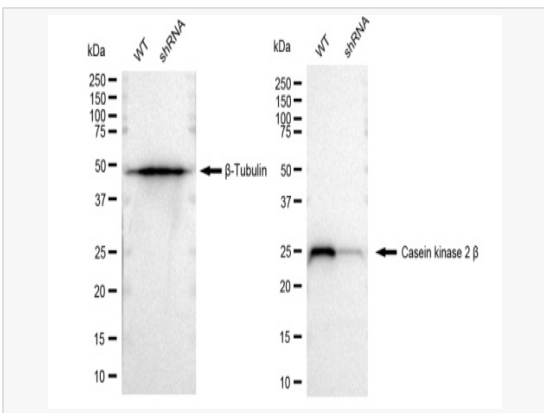
Synonyms	CSNK2B; Casein Kinase 2 Beta; Casein Kinase 2, Beta Polypeptide; Casein Kinase II Subunit Beta; Protein G5a; CK II Beta; Phosvitin; Ckb1; Ckb2; CK2N; G5A; Alternative Name: G5a, Phosvitin; Casein Kinase II Beta Subunit; CSNK2B-LY6G5B-1072; CSNK2B-LY6G5B-1103; CSNK2B-LY6G5B-532; CSNK2B-LY6G5B-560; CSNK2B-LY6G5B-562; POBINDS; CSK2B; CK2B; CKB1; CKB2.
Calculated MW	Calculated MW: 25 kDa, Observed MW: 25 kDa
Uniprot ID	P67870
Gene ID	1460
Background	Participates in Wnt signaling (By similarity). Plays a complex role in regulating the basal catalytic activity of the alpha subunit.



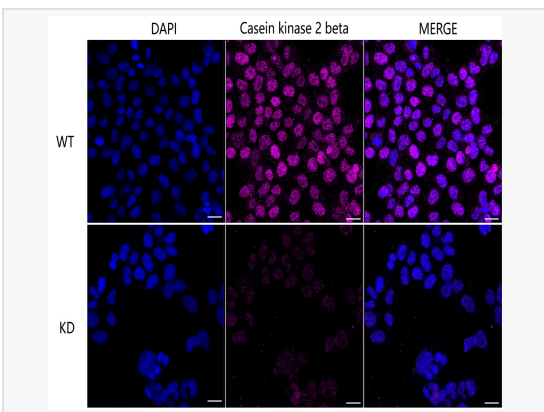
Immunocytochemical staining of HepG2 cells with Casein kinase 2 beta antibody (R021627, 1:1,000). Nuclei were stained blue with DAPI; Casein kinase 2 beta was stained magenta with Alexa Fluor® 647. Images were taken using Leica stellaris 5. Protein abundance based on laser Intensity and smart gain: Medium. Scale bar: 20 μ m.



Western blotting analysis using Casein kinase 2 beta antibody (R021627). Total cell lysates (30 μ g) from various cell lines were loaded and separated by SDS-PAGE. The blot was incubated with Casein kinase 2 beta antibody (R021627, 1:5,000) and HRP-conjugated goat anti-rabbit secondary antibody (1:20,000) respectively. Image was developed using ECL Substrate Kit.



Western blotting analysis using Casein kinase 2 beta antibody (R021627). Casein kinase 2 beta expression in wild type (WT) and Casein kinase 2 beta shRNA knockdown (KD) HeLa cells with 30 μ g of total cell lysates. β -Tubulin serves as a loading control. The blot was incubated with Casein kinase 2 beta antibody (R021627, 1:5,000) and HRP-conjugated goat anti-rabbit secondary antibody (1:20,000) respectively. Image was developed using ECL Substrate Kit.



Immunocytochemical staining of HeLa cells using Casein kinase 2 beta antibody (R021627, 1:1,000). Top panel: wild-type (WT); Bottom panel: Casein kinase 2 beta shRNA knockdown (KD). Nuclei were stained blue with DAPI; Casein kinase 2 beta was stained magenta with Alexa Fluor® 647. Scale bar, 20 μ m.