

[KD Validated] Anti-BCAP31 Rabbit mAb

Purified Recombinant Rabbit Monoclonal Antibody

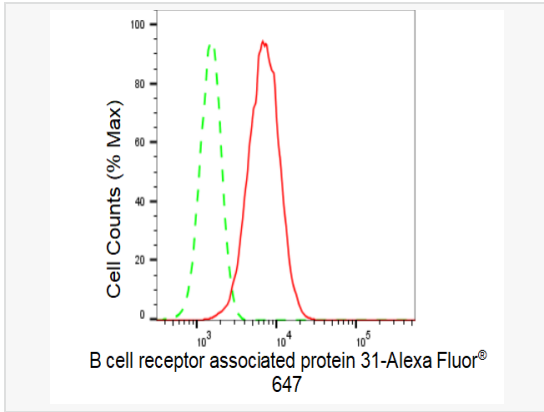
Catalog # R021625

Product Information

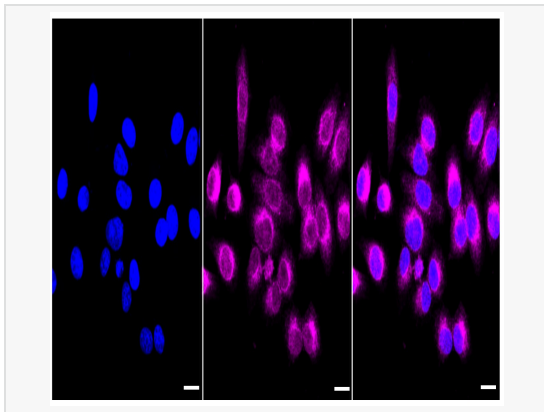
Application	WB, FC, IF (Cell)/ICC
Reactivity	Human, Mouse
Dilution	WB 1:1,000~1:5,000; FC 1:200~1:2,000; IF 1:100~1:1,000
Host	Rabbit
Clonality	Monoclonal
Clone No.	73S65A90
Isotype	IgG
Label	Unconjugated
Immunogen	A synthesized peptide derived from human DHFR
Format	Affinity purified monoclonal antibody supplied in PBS with 0.02% sodium azide and 50% glycerol, pH 7.3.
Storage	Shipped on wet ice. Store at -20°C. Stable for 12 months from date of receipt. Aliquoting is unnecessary for -20°C storage.
Precautions	[KD Validated] Anti-BCAP31 Rabbit mAb [73S65A90] is for research use only and not for use in diagnostic or therapeutic procedures.

Protein Information

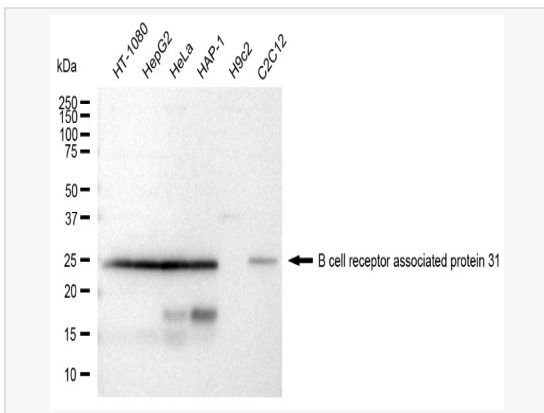
Synonyms	BCAP31; B Cell Receptor Associated Protein 31; DXS1357E; BAP31; CDM; B-Cell Receptor-Associated Protein 31; 6C6-AG Tumor-Associated Antigen; 6C6-AG; BCR-Associated Protein Bap31; BCR-Associated Protein 31; MICRODELXq28; Protein CDM; P28 Bap31; DELXQ28; 6C6-Ag; Bap31; DDCH; P28.
Calculated MW	Calculated MW: 28 kDa, Observed MW: 25 kDa
Uniprot ID	P51572
Gene ID	10134
Background	This gene encodes a member of the B-cell receptor associated protein 31 superfamily. The encoded protein is a multi-pass transmembrane protein of the endoplasmic reticulum that is involved in the anterograde transport of membrane proteins from the endoplasmic reticulum to the Golgi and in caspase 8-mediated apoptosis. Microdeletions in this gene are associated with contiguous ABCD1/DXS1375E deletion syndrome (CADD5), a neonatal disorder. Alternative splicing of this gene results in multiple transcript variants. Two related pseudogenes have been identified on chromosome 16. [provided by RefSeq, Jan 2012]
Cellular Location	Endoplasmic reticulum membrane. Endoplasmic reticulum-Golgi intermediate compartment membrane. May shuttle between the ER and the intermediate compartment/cis-Golgi complex.
Tissue Location	Ubiquitous.



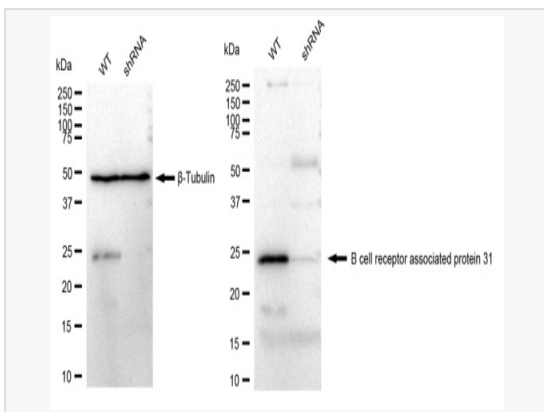
Flow cytometric analysis of B cell receptor associated protein 31 expression in HepG2 cells using B cell receptor associated protein 31 antibody (R021625, 1:2,000). Green, isotype control; red, B cell receptor associated protein 31.



Immunocytochemical staining of HepG2 cells with B cell receptor associated protein 31 antibody (R021625, 1:1,000). Nuclei were stained blue with DAPI; B cell receptor associated protein 31 was stained magenta with Alexa Fluor® 647. Images were taken using Leica stellaris 5. Protein abundance based on laser Intensity and smart gain: Medium. Scale bar: 20 µm.



Western blotting analysis using B cell receptor associated protein 31 antibody (R021625). Total cell lysates (30 µg) from various cell lines were loaded and separated by SDS-PAGE. The blot was incubated with B cell receptor associated protein 31 antibody (R021625, 1:5,000) and HRP-conjugated goat anti-rabbit secondary antibody (1:20,000) respectively. Image was developed using ECL Substrate Kit.



Western blotting analysis using B cell receptor associated protein 31 antibody (R021625). B cell receptor associated protein 31 expression in wild type (WT) and B cell receptor associated protein 31 shRNA knockdown (KD) HeLa cells with 30 µg of total cell lysates. β -Tubulin serves as a loading control. The blot was incubated with B cell receptor associated protein 31 antibody (R021625, 1:5,000) and HRP-conjugated goat anti-rabbit secondary antibody (1:20,000) respectively. Image was developed using ECL Substrate Kit.