

[KD Validated] Anti-ERAP1 Rabbit mAb

Purified Recombinant Rabbit Monoclonal Antibody

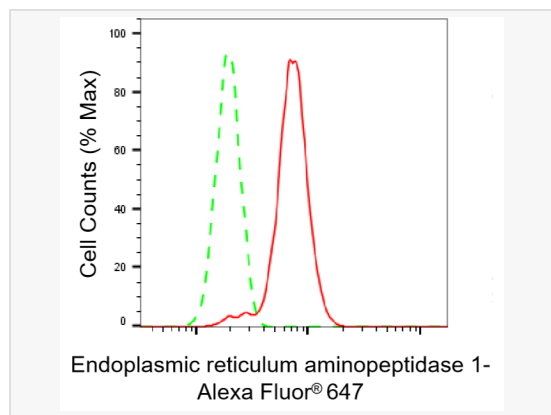
Catalog # R021536

Product Information

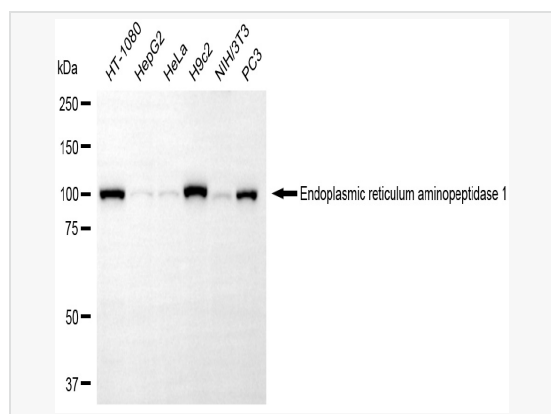
Application	WB, FC
Reactivity	Human, Mouse, Rat
Dilution	WB 1:1,000~1:5,000; FC 1:200~1:2,000
Host	Rabbit
Clonality	Monoclonal
Clone No.	85E72P54
Isotype	IgG
Label	Unconjugated
Immunogen	A synthesized peptide derived from human ERAP1
Format	Affinity purified monoclonal antibody supplied in PBS with 0.02% sodium azide and 50% glycerol, pH 7.3.
Storage	Shipped on wet ice. Store at -20°C. Stable for 12 months from date of receipt. Aliquoting is unnecessary for -20°C storage.
Precautions	[KD Validated] Anti-ERAP1 Rabbit mAb [85E72P54] is for research use only and not for use in diagnostic or therapeutic procedures.

Protein Information

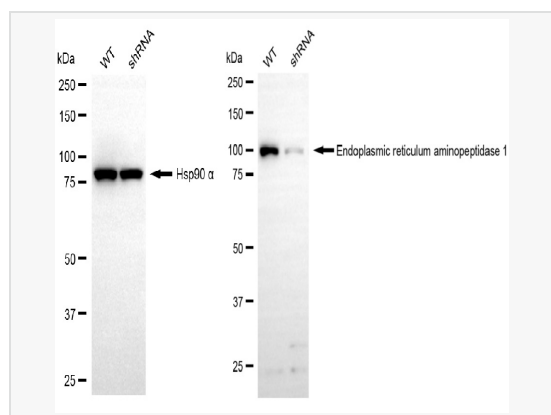
Synonyms	ERAP1; Endoplasmic Reticulum Aminopeptidase 1; PILS-AP; ARTS-1; A-LAP; Puromycin-Insensitive Leucyl-Specific Aminopeptidase; Adipocyte-Derived Leucine Aminopeptidase; KIAA0525; ERAAP1; Type 1 Tumor Necrosis Factor Receptor Shedding Aminopeptidase Regulator; Aminopeptidase Regulator Of TNFR1 Shedding; Aminopeptidase PILS; APPILS; ARTS1; Endoplasmic Reticulum Aminopeptidase Associated With Antigen Processing; EC 3.4.11.- 4; EC 3.4.11.3; EC 3.4.11; PILSAP; ERAAP; ALAP.
Calculated MW	Calculated MW: 107 kDa; Observed MW: 100 kDa
Uniprot ID	Q9NZ08
Gene ID	51752
Background	Aminopeptidase that plays a central role in peptide trimming, a step required for the generation of most HLA class I-binding peptides. Peptide trimming is essential to customize longer precursor peptides to fit them to the correct length required for presentation on MHC class I molecules. Strongly prefers substrates 9-16 residues long.



Flow cytometric analysis of Endoplasmic reticulum aminopeptidase 1 expression in HT-1080 cells using Endoplasmic reticulum aminopeptidase 1 antibody (R021536, 1:2,000). Green, isotype control; red, Endoplasmic reticulum aminopeptidase 1.



Western blotting analysis using endoplasmic reticulum aminopeptidase 1 antibody (R021536). Total cell lysates (30 μ g) from various cell lines were loaded and separated by SDS-PAGE. The blot was incubated with endoplasmic reticulum aminopeptidase 1 antibody (R021536, 1:5,000) and HRP-conjugated goat anti-rabbit secondary antibody (1:20,000) respectively. Image was developed using ECL Substrate Kit.



Western blotting analysis using endoplasmic reticulum aminopeptidase 1 antibody (R021536). Endoplasmic reticulum aminopeptidase 1 expression in wild-type (WT) and endoplasmic reticulum aminopeptidase 1 (ERAP1) shRNA knockdown (KD) HT-1080 cells with 20 μ g of total cell lysates. Hsp90 α serves as a loading control. The blot was incubated with endoplasmic reticulum aminopeptidase 1 antibody (R021536, 1:5,000) and HRP-conjugated goat anti-rabbit secondary antibody (1:20,000) respectively. Image was developed using ECL Substrate Kit.