

## [KD Validated] Anti-NELFB Rabbit mAb

Purified Recombinant Rabbit Monoclonal Antibody

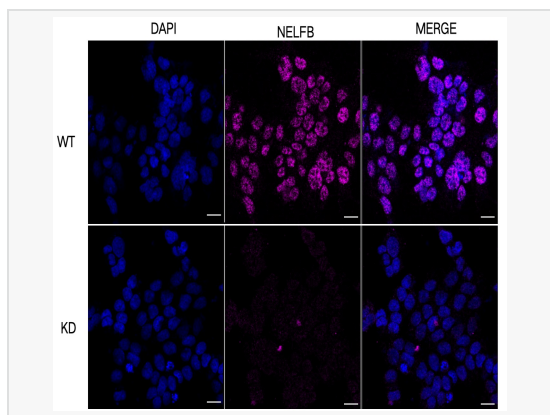
Catalog # R021429

### Product Information

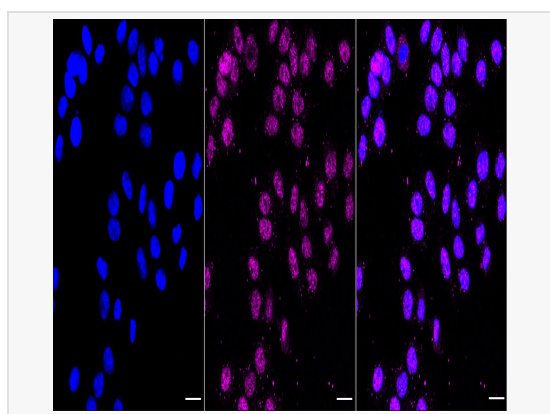
Application	WB, FC, IF (Cell)/ICC
Reactivity	Human, Mouse, Rat
Dilution	WB 1:1,000~1:5,000; FC 1:200~1:2,000; IF 1:100~1:1,000
Host	Rabbit
Clonality	Monoclonal
Clone No.	66Q79L79
Isotype	IgG
Label	Unconjugated
Immunogen	A synthesized peptide derived from human NELFB
Format	Affinity purified monoclonal antibody supplied in PBS with 0.02% sodium azide and 50% glycerol, pH 7.3.
Storage	Shipped on wet ice. Store at -20°C. Stable for 12 months from date of receipt. Aliquoting is unnecessary for -20°C storage.
Precautions	[KD Validated] Anti-NELFB Rabbit mAb [66Q79L79] is for research use only and not for use in diagnostic or therapeutic procedures.

### Protein Information

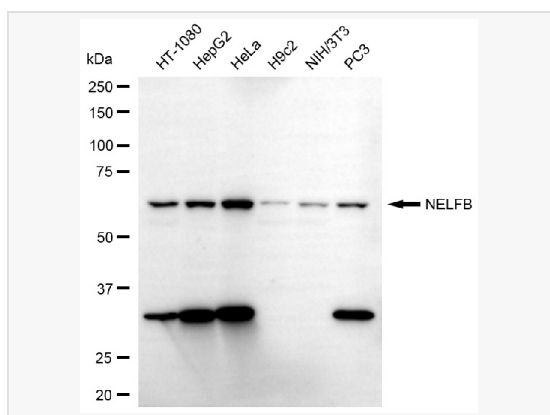
Synonyms	NELFB; Negative Elongation Factor Complex Member B; NELF-B; Cofactor Of BRCA1; KIAA1182; COBRA1; Negative Elongation Factor B; Negative Elongation Factor Protein B.
Calculated MW	Calculated MW: 66 kDa; Observed MW: 66 kDa
Uniprot ID	Q8WX92
Gene ID	25920



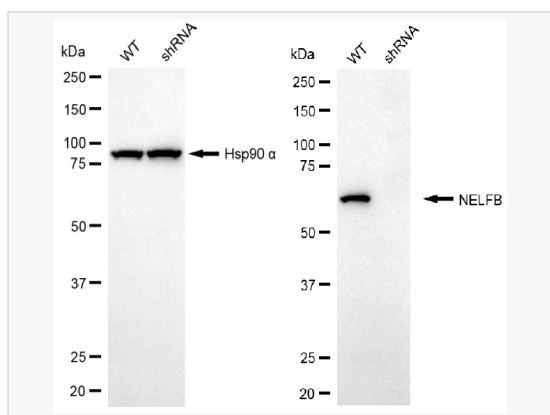
Immunocytochemical staining of HAP1 cells using NELFB antibody (R021429, 1:1,000), Top panel: wild-type (WT); Bottom panel: NELFB shRNA knockdown (KD). Nuclei were stained blue with DAPI; Acyl-CoA dehydrogenase short chain was stained magenta with Alexa Fluor® 647. Scale bar, 20  $\mu$ m.



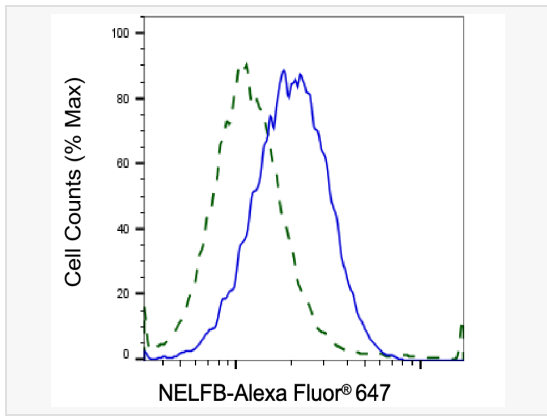
Immunocytochemical staining of HepG2 cells with NELFB antibody (R021429, 1:1,000). Nuclei were stained blue with DAPI; NELFB was stained magenta with Alexa Fluor® 647. Images were taken using Leica stellaris 5. Protein abundance based on laser Intensity and smart gain: Medium. Scale bar, 20  $\mu$ m.



Western blotting analysis using NELFB antibody (R021429). Total cell lysates (30  $\mu$ g) from various cell lines were loaded and separated by SDS-PAGE. The blot was incubated with NELFB antibody (R021429, 1:5,000) and HRP-conjugated goat anti-rabbit secondary antibody (1:20,000) respectively. Image was developed using ECL Substrate Kit.



Western blotting analysis using NELFB antibody (R021429). NELFB expression in wild-type (WT) and NELFB shRNA knockdown (KD) HSHC cells with 20  $\mu$ g of total cell lysates. Hsp90  $\alpha$  serves as a loading control. The blot was incubated with NELFB antibody (R021429, 1:5,000) and HRP-conjugated goat anti-rabbit secondary antibody (1:20,000) respectively. Image was developed using ECL Substrate Kit.



Validation of NELFB knockdown using flow cytometry. Wild-type(WT, Blue) and knockdown(KD, Green) HSHC cells were stained with NELFB antibody (R021429, 1:2,000) and analyzed using BD flow cytometer.