

[KD Validated] Anti-TK1 Rabbit mAb

Purified Recombinant Rabbit Monoclonal Antibody

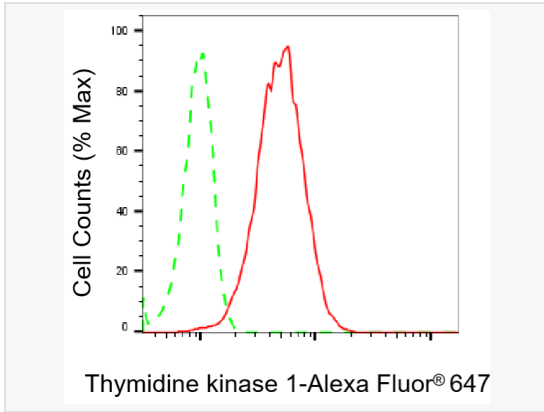
Catalog # R021337

Product Information

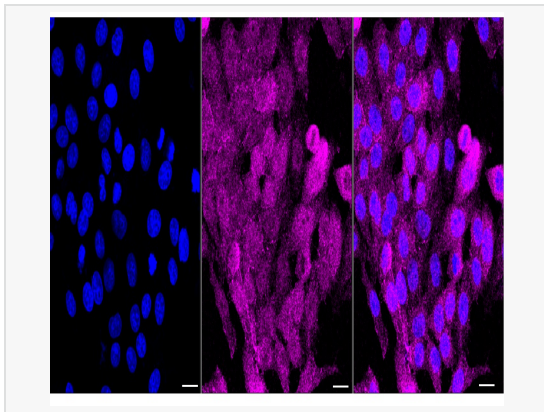
| | |
|-------------|---------------------------------------------------------------------------------------------------------------------------------|
| Application | WB, FC, IF (Cell)/ICC |
| Reactivity | Human |
| Dilution | WB 1:4,000~1:20,000; FC 1:200~1:2,000; IF 1:100~1:1,000 |
| Host | Rabbit |
| Clonality | Monoclonal |
| Clone No. | 73L80R38 |
| Isotype | IgG |
| Label | Unconjugated |
| Immunogen | A synthesized peptide derived from human Thymidine Kinase 1 |
| Format | Affinity purified monoclonal antibody supplied in PBS with 0.02% sodium azide and 50% glycerol, pH 7.3. |
| Storage | Shipped on wet ice. Store at -20°C. Stable for 12 months from date of receipt. Aliquoting is unnecessary for -20°C storage. |
| Precautions | [KD Validated] Anti-TK1 Rabbit mAb [73L80R38] is for research use only and not for use in diagnostic or therapeutic procedures. |

Protein Information

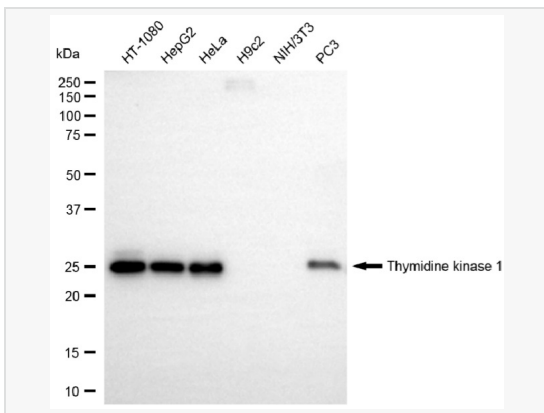
| | |
|---------------|-----------------------------------------------------------------------------------------------------------------------------------------------------------------------------------------------------------|
| Synonyms | TK1; Thymidine Kinase 1; Thymidine Kinase, Cytosolic; Cytosolic Thymidine Kinase; EC 2.7.1.21; Epididymis Secretory Sperm Binding Protein; Thymidine Kinase 1, Soluble; TK2. |
| Calculated MW | Calculated MW: 25 kDa, Observed MW: 25 kDa |
| Uniprot ID | P04183 |
| Gene ID | 7083 |
| Background | TK is a cytosolic thymidine kinase. Phosphorylated during mitosis. Its enzymatic activity is high in proliferating cells and peaks during the S-phase of the cell cycle; it is very low in resting cells. |



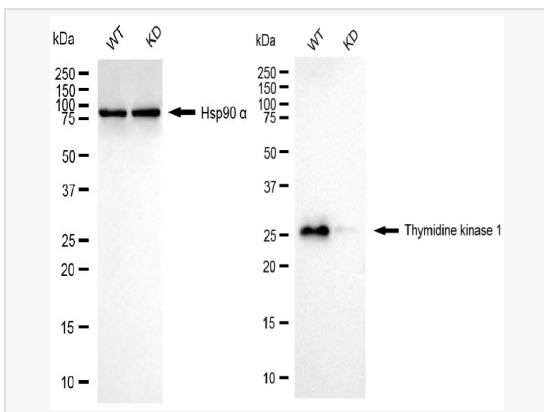
Flow cytometric analysis of Thymidine kinase 1 expression in HepG2 cells using Thymidine kinase 1 antibody (R021337, 1:2,000). Green, isotype control; red, Thymidine kinase 1.



Immunocytochemical staining of HepG2 cells with Thymidine kinase 1 antibody (R021337, 1:1,000). Nuclei were stained blue with DAPI; Thymidine kinase 1 was stained magenta with Alexa Fluor® 647. Images were taken using Leica stellaris 5. Protein abundance based on laser Intensity and smart gain: Medium. Scale bar, 20 μ m.



Western blotting analysis using thymidine kinase 1 antibody (R021337). Total cell lysates (30 μ g) from various cell lines were loaded and separated by SDS-PAGE. The blot was incubated with thymidine kinase 1 antibody (R021337, 1:20,000) and HRP-conjugated goat anti-rabbit secondary antibody (1:20,000) respectively. Image was developed using ECL Substrate Kit.



Western blotting analysis using thymidine kinase 1 antibody (R021337). Thymidine kinase 1 expression in wild type (WT) and thymidine kinase 1 (TK1) knockdown (KD) HSHC cells with 20 μ g of total cell lysates. Hsp90 α serves as a loading control. The blot was incubated with thymidine kinase 1 antibody (R021337, 1:5,000) and HRP-conjugated goat anti-rabbit secondary antibody (1:20,000) respectively. Image was developed using ECL Substrate Kit.