

## [KD Validated] Anti-TRIB3 Rabbit mAb

Purified Recombinant Rabbit Monoclonal Antibody

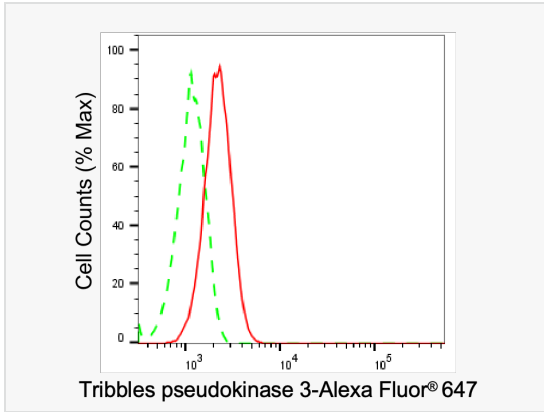
Catalog # R021268

### Product Information

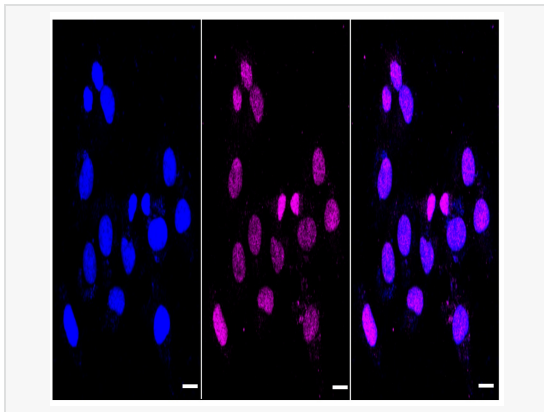
Application	WB, FC, IF (Cell)/ICC
Reactivity	Human
Dilution	WB 1:1,000~1:5,000; FC 1:200~1:2,000; IF 1:100~1:1,000
Host	Rabbit
Clonality	Monoclonal
Clone No.	70O92G34
Isotype	IgG
Label	Unconjugated
Immunogen	A synthesized peptide derived from human TRIB3
Format	Affinity purified monoclonal antibody supplied in PBS with 0.02% sodium azide and 50% glycerol, pH 7.3.
Storage	Shipped on wet ice. Store at -20°C. Stable for 12 months from date of receipt. Aliquoting is unnecessary for -20°C storage.
Precautions	[KD Validated] Anti-TRIB3 Rabbit mAb [70O92G34] is for research use only and not for use in diagnostic or therapeutic procedures.

### Protein Information

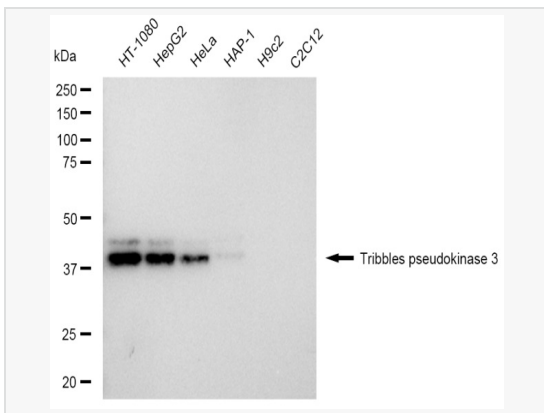
Synonyms	TRIB3; Tribbles Pseudokinase 3; TRB3; P65-Interacting Inhibitor Of NF-Kappa-B; Tribbles Homolog 3; DJ1103G7.3; C20orf97; SKIP3; TRB-3; NIPK; SINK; Neuronal Cell Death Inducible Putative Kinase; Neuronal Cell Death-Inducible Putative Kinase; P65-Interacting Inhibitor Of NF-KappaB; Chromosome 20 Open Reading Frame 97; Tribbles Homolog 3 (Drosophila); C20ORF97.
Calculated MW	Calculated MW: 40 kDa, Observed MW: 40 kDa
Uniprot ID	Q96RU7
Gene ID	57761
Background	Disrupts insulin signaling by binding directly to Akt kinases and blocking their activation. May bind directly to and mask the 'Thr-308' phosphorylation site in AKT1. Binds to ATF4 and inhibits its transcriptional activation activity. Interacts with the NF-kappa-B transactivator p65 RELA and inhibits its phosphorylation and thus its transcriptional activation activity.



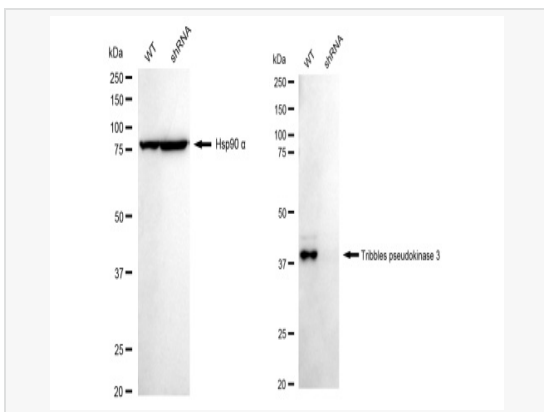
Flow cytometric analysis of Tribbles pseudokinase 3 expression in HT-1080 cells using Tribbles pseudokinase 3 antibody (R021268, 1:2,000). Green, isotype control; red, Tribbles pseudokinase 3.



Immunocytochemical staining of HT-1080 cells with Tribbles pseudokinase 3 antibody (R021268, 1:1,000). Nuclei were stained blue with DAPI; Tribbles pseudokinase 3 was stained magenta with Alexa Fluor® 647. Images were taken using Leica stellaris 5. Protein abundance based on laser Intensity and smart gain: Very low. Scale bar: 20  $\mu$ m.



Western blotting analysis using Tribbles pseudokinase 3 antibody (R021268). Total cell lysates (30  $\mu$ g) from various cell lines were loaded and separated by SDS-PAGE. The blot was incubated with Tribbles pseudokinase 3 antibody (R021268, 1:5,000) and HRP-conjugated goat anti-rabbit secondary antibody (1:20,000) respectively. Image was developed using ECL Substrate Kit.



Western blotting analysis using Tribbles pseudokinase 3 antibody (R021268). Tribbles pseudokinase 3 expression in wild type (WT) and Tribbles pseudokinase 3 shRNA knockdown (KD) HeLa cells with 30  $\mu$ g of total cell lysates. Hsp90  $\alpha$  serves as a loading control. The blot was incubated with Tribbles pseudokinase 3 antibody (R021268, 1:5,000) and HRP-conjugated goat anti-rabbit secondary antibody (1:20,000) respectively. Image was developed using ECL Substrate Kit.