

## [KD Validated] Anti-NFKBIA Rabbit mAb

Purified Recombinant Rabbit Monoclonal Antibody

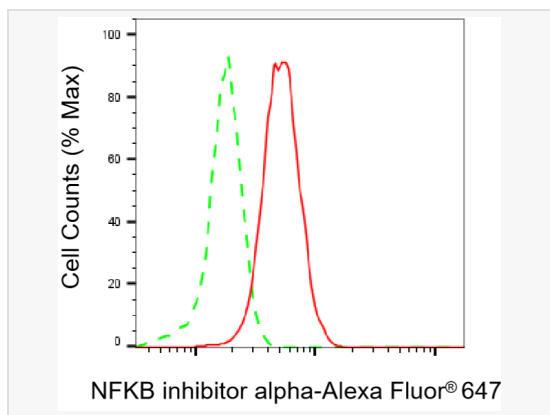
Catalog # R021233

### Product Information

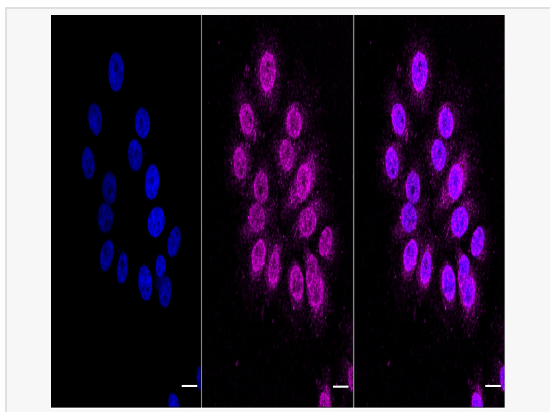
Application	WB, FC, IF (Cell)/ICC, IHC-P/IF (Tissue-P)
Reactivity	Human, Mouse, Rat
Dilution	WB 1:1,000~1:5,000; FC 1:200~1:2,000; IF 1:100~1:1,000; IHC-P 1:100~1:200
Host	Rabbit
Clonality	Monoclonal
Clone No.	91G70D43
Isotype	IgG
Label	Unconjugated
Immunogen	A synthesized peptide derived from human IKB alpha
Format	Affinity purified monoclonal antibody supplied in PBS with 0.02% sodium azide and 50% glycerol, pH 7.3.
Storage	Shipped on wet ice. Store at -20°C. Stable for 12 months from date of receipt. Aliquoting is unnecessary for -20°C storage.
Precautions	[KD Validated] Anti-NFKBIA Rabbit mAb [91G70D43] is for research use only and not for use in diagnostic or therapeutic procedures.

### Protein Information

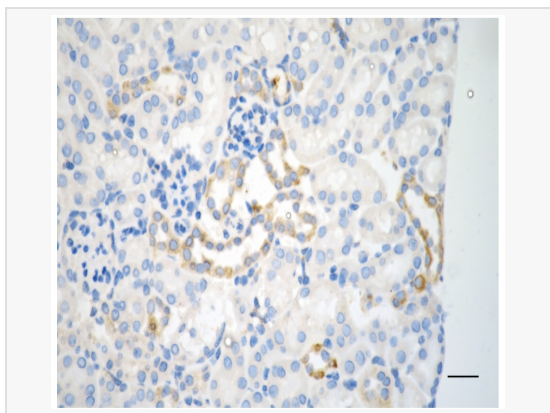
Synonyms	NFKBIA; I-kappa-B-alpha; NFKBI; NFKBIA; NF-kappaB inhibitor alpha; IKBA; IkappaBalpha; MAD3; RL/IF-1.
Calculated MW	Calculated MW: 36 kDa; Observed MW: 35 kDa
Uniprot ID	P25963
Gene ID	4792
Background	NFKB1 (MIM 164011) or NFKB2 (MIM 164012) is bound to REL (MIM 164910), RELA (MIM 164014), or RELB (MIM 604758) to form the NFKB complex. The NFKB complex is inhibited by I-kappa-B proteins (NFKBIA or NFKBIB, MIM 604495), which inactivate NF-kappa-B by trapping it in the cytoplasm.



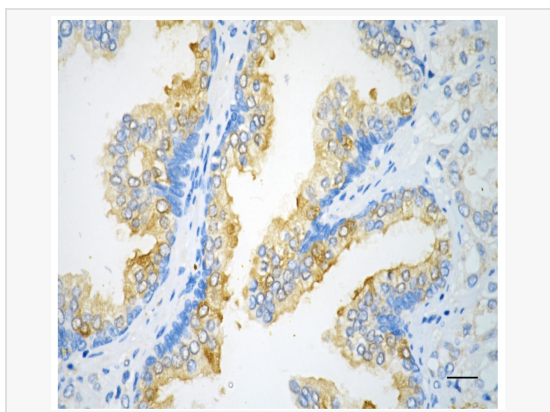
Flow cytometric analysis of NFKB inhibitor alpha expression in HepG2 cells using NFKB inhibitor alpha antibody (R021233, 1:2,000). Green, isotype control; red, NFKB inhibitor alpha.



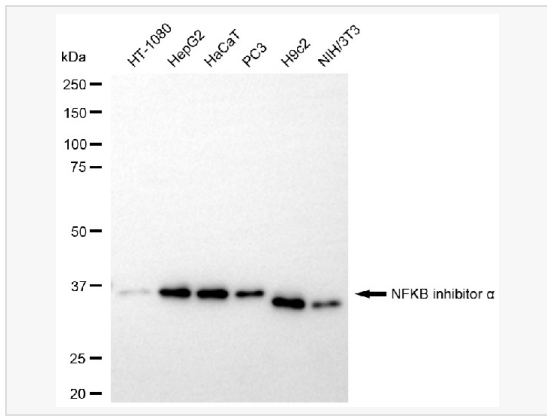
Immunocytochemical staining of HepG2 cells with NFKB inhibitor alpha antibody (R021233, 1:1,000). Nuclei were stained blue with DAPI; NFKB inhibitor alpha was stained magenta with Alexa Fluor® 647. Images were taken using Leica stellaris 5. Protein abundance based on laser Intensity and smart gain: Low. Scale bar, 20 µm.



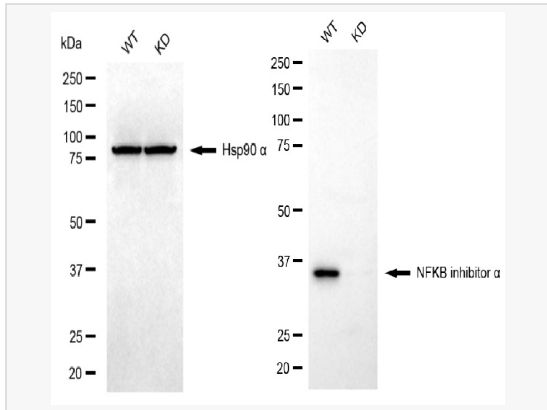
Immunohistochemistry was performed on paraffin-embedded mouse kidney using NFKB inhibitor alpha antibody (R021233, 1:200). Antigen retrieval was done in sodium citrate buffer (pH 6.0). DAB was used for detection, with hematoxylin counterstaining. Images were acquired using a Nikon Ci-L Plus microscope (40× objective). Scale bar: 25 µm.



Immunohistochemistry was performed on paraffin-embedded human prostatic adenocarcinoma using NFKB inhibitor alpha antibody (R021233, 1:200). Antigen retrieval was done in sodium citrate buffer (pH 6.0). DAB was used for detection, with hematoxylin counterstaining. Images were acquired using a Nikon Ci-L Plus microscope (40× objective). Scale bar: 25 µm.



Western blotting analysis using NFKB inhibitor alpha antibody (R021233). Total cell lysates (30  $\mu$ g) from various cell lines were loaded and separated by SDS-PAGE. The blot was incubated with NFKB inhibitor alpha antibody (R021233, 1:5,000) and HRP-conjugated goat anti-rabbit secondary antibody (1:20,000) respectively. Image was developed using ECL Substrate Kit.



Western blotting analysis using NFKB inhibitor alpha antibody (R021233). NFKB inhibitor alpha expression in wild-type (WT) and NFKB inhibitor alpha (NFKBIA) knockdown (KD) HSHC cells with 20  $\mu$ g of total cell lysates. Hsp90  $\alpha$  serves as a loading control. The blot was incubated with NFKB inhibitor alpha antibody (R021233, 1:5,000) and HRP-conjugated goat anti-rabbit secondary antibody (1:20,000) respectively. Image was developed using ECL Substrate Kit.