

## [KD Validated] Anti-ELP4 Rabbit mAb

Purified Recombinant Rabbit Monoclonal Antibody

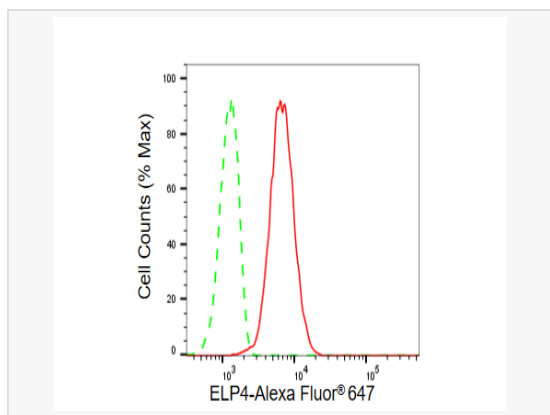
Catalog # R021169

### Product Information

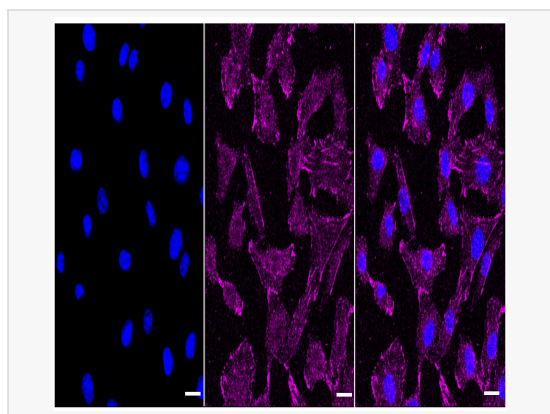
Application	WB, FC, IF (Cell)/ICC
Reactivity	Human, Mouse, Rat
Dilution	WB 1:1,000~1:5,000; FC 1:200~1:2,000; IF 1:100~1:1,000
Host	Rabbit
Clonality	Monoclonal
Clone No.	56S03S37
Isotype	IgG
Label	Unconjugated
Immunogen	A synthesized peptide derived from human ELP4
Format	Affinity purified monoclonal antibody supplied in PBS with 0.02% sodium azide and 50% glycerol, pH 7.3.
Storage	Shipped on wet ice. Store at -20°C. Stable for 12 months from date of receipt. Aliquoting is unnecessary for -20°C storage.
Precautions	[KD Validated] Anti-ELP4 Rabbit mAb [56S03S37] is for research use only and not for use in diagnostic or therapeutic procedures.

### Protein Information

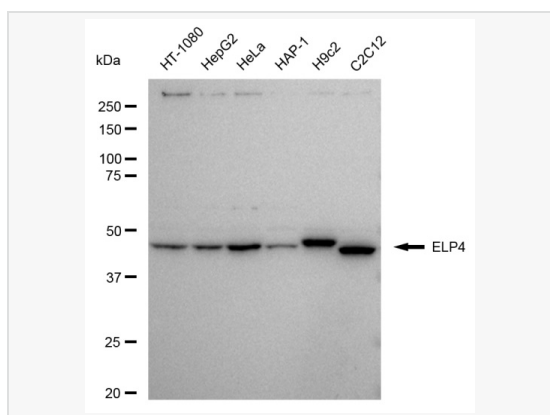
Synonyms	ELP4; Elongator Acetyltransferase Complex Subunit 4; PAXNEB; Elongator Complex Protein 4; PAX6 Neighbor Gene Protein; C11orf19; HELP4; Elongation Protein 4 Homolog (S. Cerevisiae); Chromosome 11 Open Reading Frame 19; Elongation Protein 4 Homolog; DJ68P15A.1; C11ORF19; PAX6NEB; AN2; AN.
Calculated MW	Calculated MW: 47 kDa, Observed MW: 46 kDa
Uniprot ID	Q96EB1
Gene ID	26610
Background	Acts as subunit of the RNA polymerase II elongator complex, which is a histone acetyltransferase component of the RNA polymerase II (Pol II) holoenzyme and is involved in transcriptional elongation. Elongator may play a role in chromatin remodeling and is involved in acetylation of histones H3 and probably H4.
Cellular Location	Cytoplasm. Nucleus.
Tissue Location	Widely expressed.



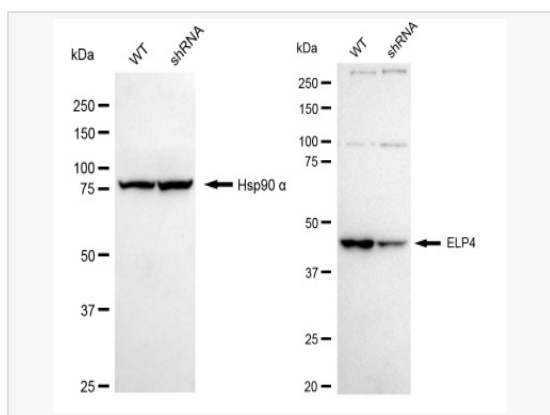
Flow cytometric analysis of ELP4 expression in C2C12 cells using ELP4 antibody (R021169, 1:2,000). Green, isotype control; red, ELP4.



Immunocytochemical staining of HepG2 cells with ELP4 antibody (R021169, 1:1,000). Nuclei were stained blue with DAPI; ELP4 was stained magenta with Alexa Fluor® 647. Images were taken using Leica stellaris 5. Protein abundance based on laser Intensity and smart gain: Low. Scale bar, 20  $\mu$ m.



Western blotting analysis using ELP4 antibody (R021169). Total cell lysates (30  $\mu$ g) from various cell lines were loaded and separated by SDS-PAGE. The blot was incubated with ELP4 antibody (R021169, 1:5,000) and HRP-conjugated goat anti-rabbit secondary antibody (1:20,000) respectively. Image was developed using ECL Substrate Kit.



Western blotting analysis using ELP4 antibody (R021169). ELP4 expression in wild type (WT) and ELP4 shRNA knockdown (KD) HeLa cells with 30  $\mu$ g of total cell lysates. Hsp90  $\alpha$  serves as a loading control. The blot was incubated with ELP4 antibody (R021169, 1:5,000) and HRP-conjugated goat anti-rabbit secondary antibody (1:20,000) respectively. Image was developed using ECL Substrate Kit.