

[KD Validated] Anti-CNTNAP1 Rabbit mAb

Purified Recombinant Rabbit Monoclonal Antibody

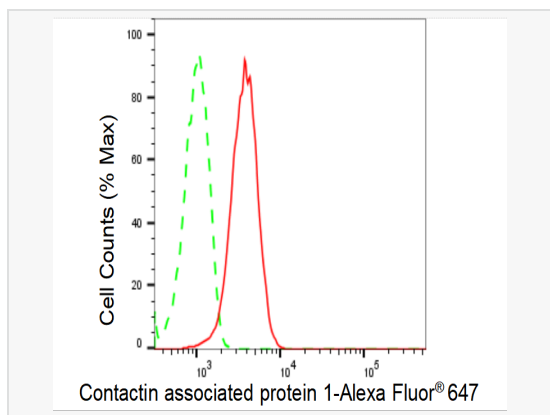
Catalog # R021143

Product Information

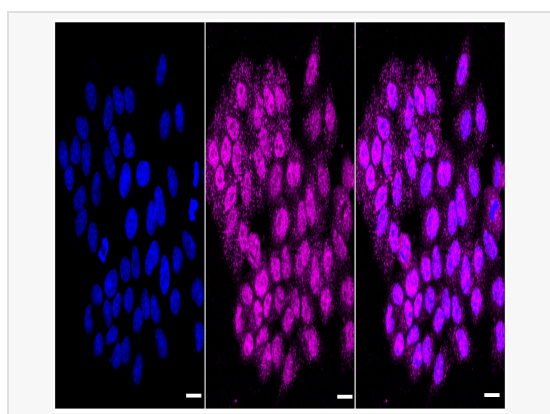
Application	WB, FC, IF (Cell)/ICC
Reactivity	Human, Mouse
Dilution	WB 1:1,000~1:5,000; FC 1:200~1:2,000; IF 1:100~1:1,000
Host	Rabbit
Clonality	Monoclonal
Clone No.	31S33A53
Isotype	IgG
Label	Unconjugated
Immunogen	A synthesized peptide derived from human Caspr
Format	Affinity purified monoclonal antibody supplied in PBS with 0.02% sodium azide and 50% glycerol, pH 7.3.
Storage	Shipped on wet ice. Store at -20°C. Stable for 12 months from date of receipt. Aliquoting is unnecessary for -20°C storage.
Precautions	[KD Validated] Anti-CNTNAP1 Rabbit mAb [31S33A53] is for research use only and not for use in diagnostic or therapeutic procedures.

Protein Information

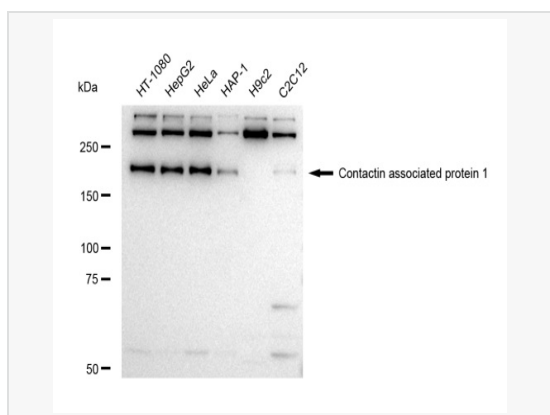
Synonyms	CNTNAP1; Contactin Associated Protein 1; P190; CNTNAP; CASPR; NRXN4; Contactin-Associated Protein 1; Neurexin IV; Neurexin-4; Caspr1; Caspr; Neurexin 4; CHN3.
Calculated MW	Calculated MW: 156 kDa, Observed MW: 165 kDa
Uniprot ID	P78357
Gene ID	8506
Background	The gene product was initially identified as a 190-kD protein associated with the contactin-PTPRZ1 complex. The 1,384-amino acid protein, also designated p190 or CASPR for 'contactin-associated protein,' includes an extracellular domain with several putative protein-protein interaction domains, a putative transmembrane domain, and a 74-amino acid cytoplasmic domain. Northern blot analysis showed that the gene is transcribed predominantly in brain as a transcript of 6.2 kb, with weak expression in several other tissues tested. The architecture of its extracellular domain is similar to that of neurexins, and this protein may be the signaling subunit of contactin, enabling recruitment and activation of intracellular signaling pathways in neurons. [provided by RefSeq, Jan 2009].
Cellular Location	Membrane.
Tissue Location	Predominantly expressed in brain. Weak expression detected in ovary, pancreas, colon, lung, heart, intestine and testis.



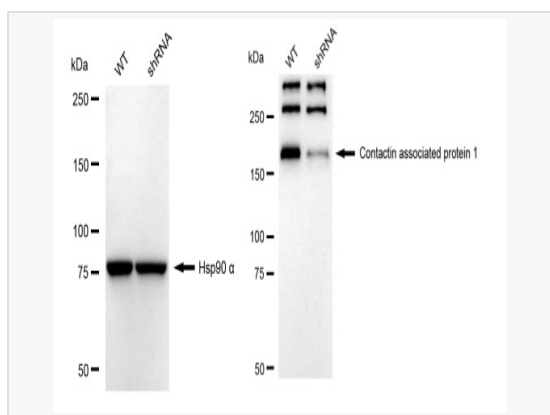
Flow cytometric analysis of Contactin associated protein 1 expression in HepG2 cells using Contactin associated protein 1 antibody (R021143, 1:2,000). Green, isotype control; red, Contactin associated protein 1.



Immunocytochemical staining of HepG2 cells with Contactin associated protein 1 antibody (R021143, 1:1,000). Nuclei were stained blue with DAPI; Contactin associated protein 1 was stained magenta with Alexa Fluor® 647. Images were taken using Leica stellaris 5. Protein abundance based on laser Intensity and smart gain: Medium. Scale bar, 20 μ m.



Western blotting analysis using Contactin associated protein 1 antibody (R021143). Total cell lysates (30 μ g) from various cell lines were loaded and separated by SDS-PAGE. The blot was incubated with Contactin associated protein 1 antibody (R021143, 1:5,000) and HRP-conjugated goat anti-rabbit secondary antibody (1:20,000) respectively. Image was developed using ECL Substrate Kit.



Western blotting analysis using Contactin associated protein 1 antibody (R021143). Contactin associated protein 1 expression in wild type (WT) and Contactin associated protein 1 shRNA knockdown (KD) HT-1080 cells with 30 μ g of total cell lysates. Hsp90 α serves as a loading control. The blot was incubated with Contactin associated protein 1 antibody (R021143, 1:5,000) and HRP-conjugated goat anti-rabbit secondary antibody (1:20,000) respectively. Image was developed using ECL Substrate Kit.