

[KD Validated] Anti-GOPC Rabbit mAb

Purified Recombinant Rabbit Monoclonal Antibody

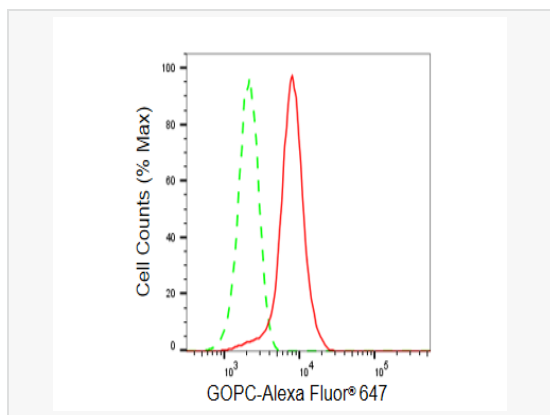
Catalog # R021130

Product Information

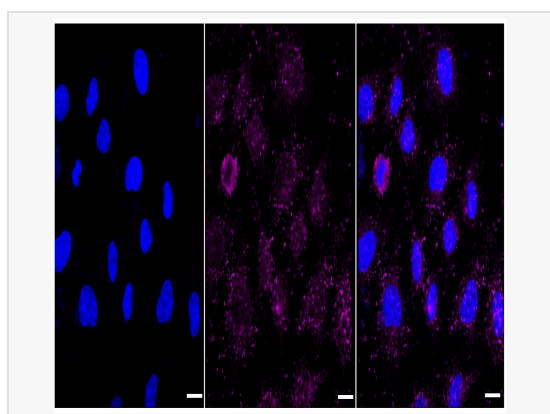
Application	WB, FC, IF (Cell)/ICC
Reactivity	Human, Mouse, Rat
Dilution	WB 1:1,000~1:5,000; FC 1:200~1:2,000; IF 1:100~1:1,000
Host	Rabbit
Clonality	Monoclonal
Clone No.	42Q12B41
Isotype	IgG
Label	Unconjugated
Immunogen	A synthesized peptide derived from human PIST
Format	Affinity purified monoclonal antibody supplied in PBS with 0.02% sodium azide and 50% glycerol, pH 7.3.
Storage	Shipped on wet ice. Store at -20°C. Stable for 12 months from date of receipt. Aliquoting is unnecessary for -20°C storage.
Precautions	[KD Validated] Anti-GOPC Rabbit mAb [42Q12B41] is for research use only and not for use in diagnostic or therapeutic procedures.

Protein Information

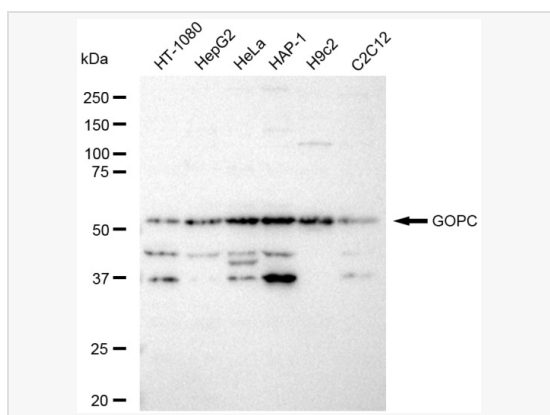
Synonyms	GOPC; Golgi Associated PDZ And Coiled-Coil Motif Containing; PIST; FIG; CAL; DJ94G16.2; GOPC1; Golgi-Associated PDZ And Coiled-Coil Motif-Containing Protein; PDZ Protein Interacting Specifically With TC10; CFTR-Associated Ligand; Fused In Glioblastoma; PDZ/Coiled-Coil Domain Binding Partner For The Rho-Family GTPase TC10; Golgi-Associated PDZ And Coiled-Coil Motif Containing Protein; DJ94G16.2 PIST.
Calculated MW	Calculated MW: 51 kDa, Observed MW: 51 kDa
Uniprot ID	Q9HD26
Gene ID	57120
Background	This gene encodes a Golgi protein with a PDZ domain. The PDZ domain is globular and proteins which contain them bind other proteins through short motifs near the C-termini. Mice which are deficient in the orthologous protein have globozoospermia and are infertile. Multiple transcript variants encoding different isoforms have been found for this gene.



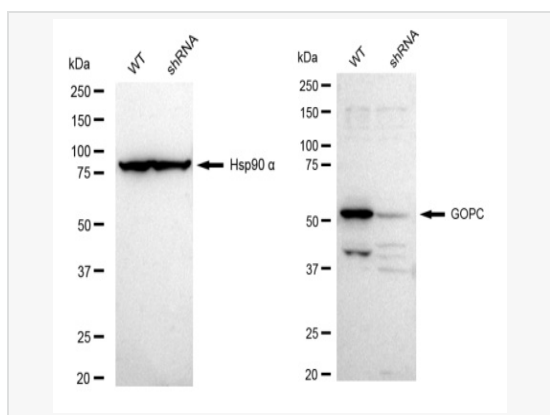
Flow cytometric analysis of GOPC expression in HeLa cells using GOPC antibody (R021130, 1:2,000). Green, isotype control; red, GOPC.



Immunocytochemical staining of HeLa cells with GOPC antibody (R021130, 1:1,000). Nuclei were stained blue with DAPI; GOPC was stained magenta with Alexa Fluor® 647. Images were taken using Leica stellaris 5. Protein abundance based on laser Intensity and smart gain: Medium. Scale bar: 20 μ m.



Western blotting analysis using GOPC antibody (R021130). Total cell lysates (30 μ g) from various cell lines were loaded and separated by SDS-PAGE. The blot was incubated with GOPC antibody (R021130, 1:5,000) and HRP-conjugated goat anti-rabbit secondary antibody (1:20,000) respectively. Image was developed using ECL Substrate Kit.



Western blotting analysis using GOPC antibody (R021130). GOPC expression in wild type (WT) and GOPC shRNA knockdown (KD) HeLa cells with 30 μ g of total cell lysates. Hsp90 α serves as a loading control. The blot was incubated with GOPC antibody (R021130, 1:5,000) and HRP-conjugated goat anti-rabbit secondary antibody (1:20,000) respectively. Image was developed using ECL Substrate Kit.