

[KD Validated] Anti-GTF2I Rabbit mAb

Purified Recombinant Rabbit Monoclonal Antibody

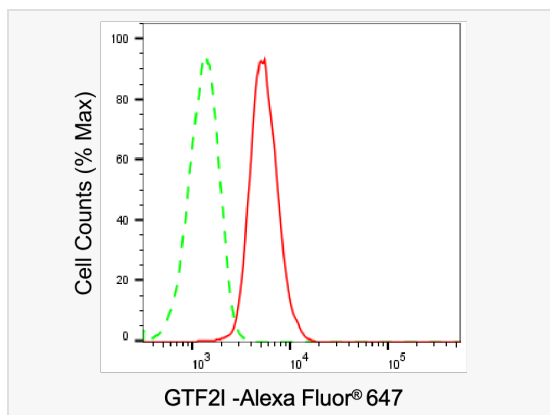
Catalog # R021129

Product Information

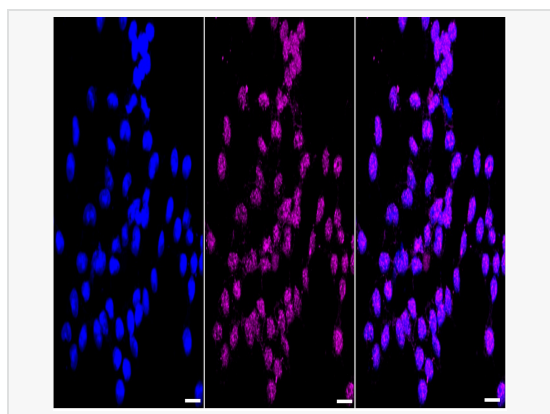
Application	WB, FC, IF (Cell)/ICC
Reactivity	Human, Mouse, Rat
Dilution	WB 1:1,000~1:5,000; FC 1:200~1:2,000; IF 1:100~1:1,000
Host	Rabbit
Clonality	Monoclonal
Clone No.	69E66F85
Isotype	IgG
Label	Unconjugated
Immunogen	A synthesized peptide derived from human GTF2I
Format	Affinity purified monoclonal antibody supplied in PBS with 0.02% sodium azide and 50% glycerol, pH 7.3.
Storage	Shipped on wet ice. Store at -20°C. Stable for 12 months from date of receipt. Aliquoting is unnecessary for -20°C storage.
Precautions	[KD Validated] Anti-GTF2I Rabbit mAb [69E66F85] is for research use only and not for use in diagnostic or therapeutic procedures.

Protein Information

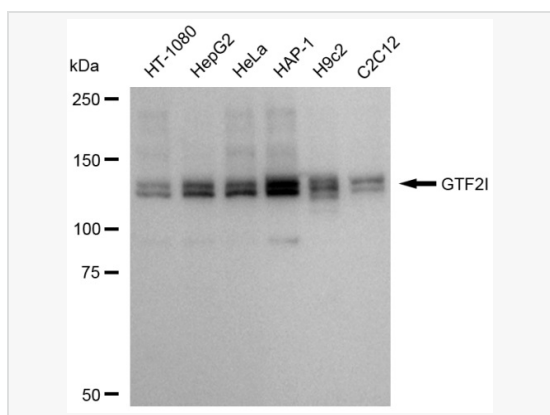
Synonyms	GTF2I; General Transcription Factor II; TFII-I; SPIN; BAP-135; BTKAP1; WBSCR6; IB291; DIWS; Bruton Tyrosine Kinase-Associated Protein 135; General Transcription Factor II-I; SRF-Phox1-Interacting Protein; GTFII-I; BAP135; Williams-Beuren Syndrome Chromosomal Region 6 Protein; Williams-Beuren Syndrome Chromosome Region 6; General Transcription Factor II, I; BTK-Associated Protein, 135kD; BTK-Associated Protein 135; WBS.
Calculated MW	Calculated MW: 117 kDa, Observed MW: 135 kDa
Uniprot ID	P78347
Gene ID	2969
Background	Interacts with the basal transcription machinery by coordinating the formation of a multiprotein complex at the C-FOS promoter, and linking specific signal responsive activator complexes.



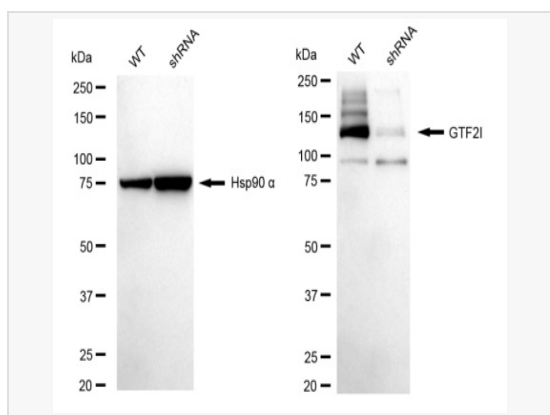
Flow cytometric analysis of GTF2I expression in HAP-1 cells using GTF2I antibody (R021129, 1:2,000). Green, isotype control; red, GTF2I .



Immunocytochemical staining of HAP1 cells with GTF2I antibody (R021129, 1:1,000) . Nuclei were stained blue with DAPI;GTF2I was stained magenta with Alexa Fluor® 647. Images were taken using Leica stellaris 5. Protein abundance based on laser Intensity and smart gain: Medium. Scale bar, 20 µm.



Western blotting analysis using GTF2I antibody (R021129). Total cell lysates (30 µg) from various cell lines were loaded and separated by SDS-PAGE. The blot was incubated with GTF2I antibody (R021129, 1:5,000) and HRP-conjugated goat anti-rabbit secondary antibody (1:20,000) respectively. Image was developed using ECL Substrate Kit.



Western blotting analysis using GTF2I antibody (R021129). GTF2I expression in wild type (WT) and GTF2I shRNA knockdown (KD) HeLa cells with 30 µg of total cell lysates. Hsp90 α serves as a loading control. The blot was incubated with GTF2I antibody (R021129, 1:5,000) and HRP-conjugated goat anti-rabbit secondary antibody (1:20,000) respectively. Image was developed using ECL Substrate Kit.