

[KD Validated] Anti-PABPN1 Rabbit mAb

Purified Recombinant Rabbit Monoclonal Antibody

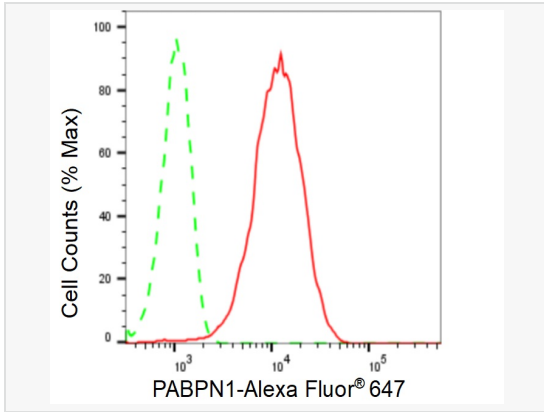
Catalog # R021071

Product Information

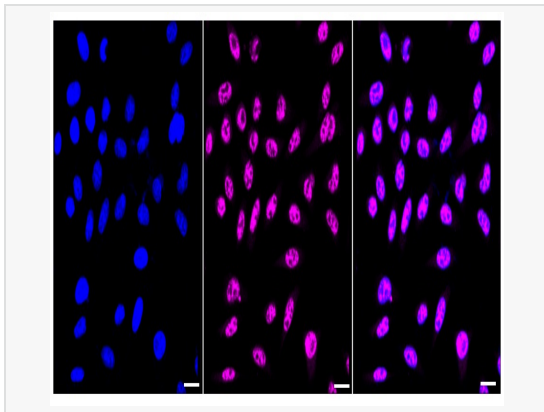
Application	WB, FC, IF (Cell)/ICC
Reactivity	Human, Mouse, Rat
Dilution	WB 1:1,000~1:5,000; FC 1:200~1:2,000; IF 1:100~1:1,000
Host	Rabbit
Clonality	Monoclonal
Clone No.	34M86B17
Isotype	IgG
Label	Unconjugated
Immunogen	A synthesized peptide derived from human PABPN1
Format	Affinity purified monoclonal antibody supplied in PBS with 0.02% sodium azide and 50% glycerol, pH 7.3.
Storage	Shipped on wet ice. Store at -20°C. Stable for 12 months from date of receipt. Aliquoting is unnecessary for -20°C storage.
Precautions	[KD Validated] Anti-PABPN1 Rabbit mAb [34M86B17] is for research use only and not for use in diagnostic or therapeutic procedures.

Protein Information

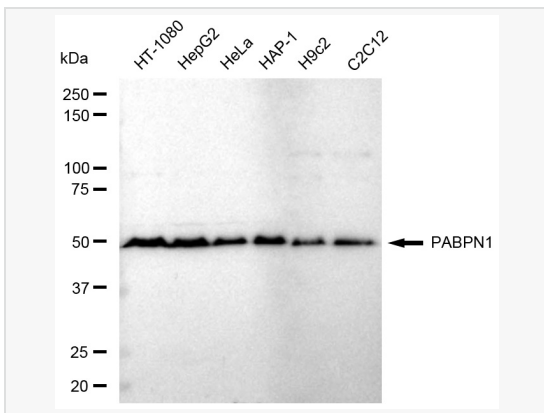
Synonyms	PABPN1; Poly(A) Binding Protein Nuclear 1; PAB2 ; PABP2; Polyadenylate-Binding Protein 2; PABP-2; PABII; OPMD; Polyadenylate-Binding Nuclear Protein 1; Poly(A)-Binding Protein, Nuclear 1; Poly(A) Binding Protein, Nuclear 1; Nuclear Poly(A)-Binding Protein 1; Poly(A) Binding Protein II; Poly(A)-Binding Protein II; Poly(A) Binding Protein 2; Poly(A)-Binding Protein 2.
Calculated MW	Calculated MW: 33 kDa, Observed MW: 49 kDa
Uniprot ID	Q86U42
Gene ID	8106
Background	Involved in the 3'-end formation of mRNA precursors (pre-mRNA) by the addition of a poly(A) tail of 200-250 nt to the upstream cleavage product. Stimulates poly(A) polymerase (PAPOLA) conferring processivity on the poly(A) tail elongation reaction and controls also the poly(A) tail length. Increases the affinity of poly(A) polymerase for RNA.



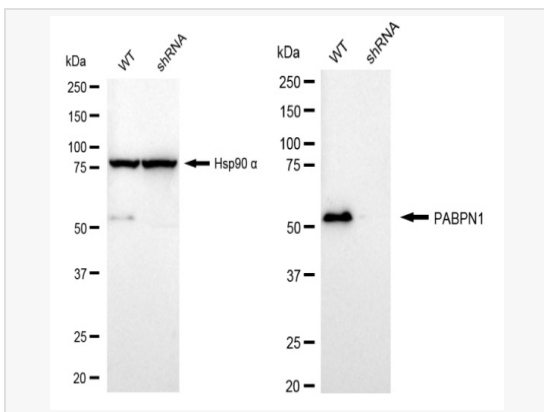
Flow cytometric analysis of PABPN1 expression in HepG2 cells using PABPN1 antibody (R021071, 1:2,000). Green, isotype control; red, PABPN1.



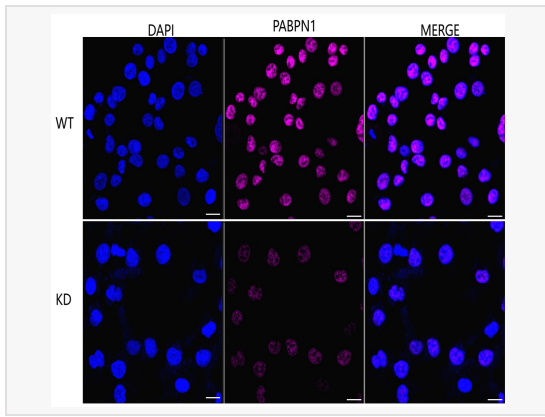
Immunocytochemical staining of HeLa cells with PABPN1 antibody (R021071, 1:1,000). Nuclei were stained blue with DAPI; PABPN1 was stained magenta with Alexa Fluor® 647. Images were taken using Leica stellaris 5. Protein abundance based on laser Intensity and smart gain: High. Scale bar: 20 µm.



Western blotting analysis using PABPN1 antibody (R021071). Total cell lysates (30 µg) from various cell lines were loaded and separated by SDS-PAGE. The blot was incubated with PABPN1 antibody (R021071, 1:5,000) and HRP-conjugated goat anti-rabbit secondary antibody (1:20,000) respectively. Image was developed using ECL Substrate Kit.



Western blotting analysis using PABPN1 antibody (R021071). PABPN1 expression in wild type (WT) and PABPN1 shRNA knockdown (KD) HT-1080 cells with 20 µg of total cell lysates. Hsp90 α serves as a loading control. The blot was incubated with PABPN1 antibody (R021071, 1:5,000) and HRP-conjugated goat anti-rabbit secondary antibody (1:20,000) respectively. Image was developed using ECL Substrate Kit.



Immunocytochemical staining of HT1080 cells using PABPN1 antibody (R021071, 1:1,000), Top panel: wild-type (WT); Bottom panel: PABPN1 shRNA knockdown (KD). Nuclei were stained blue with DAPI; PABPN1 was stained magenta with Alexa Fluor® 647. Scale bar, 20 μ m. Permeabilization: Triton.