

[KD Validated] Anti-PRMT5 Rabbit mAb

Purified Recombinant Rabbit Monoclonal Antibody

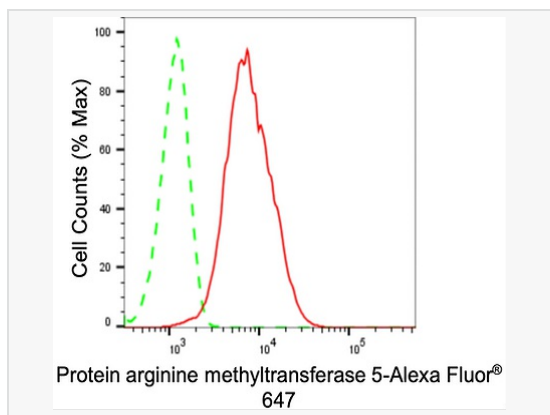
Catalog # R021044

Product Information

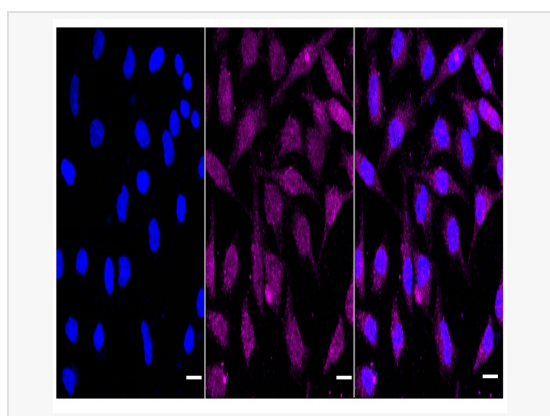
Application	WB, FC, IF (Cell)/ICC
Reactivity	Human, Mouse, Rat
Dilution	WB 1:2,000~1:10,000; FC 1:200~1:2,000; IF 1:100~1:1,000
Host	Rabbit
Clonality	Monoclonal
Clone No.	96A59L29
Isotype	IgG
Label	Unconjugated
Immunogen	A synthesized peptide derived from human PRMT5
Format	Affinity purified monoclonal antibody supplied in PBS with 0.02% sodium azide and 50% glycerol, pH 7.3.
Storage	Shipped on wet ice. Store at -20°C. Stable for 12 months from date of receipt. Aliquoting is unnecessary for -20°C storage.
Precautions	[KD Validated] Anti-PRMT5 Rabbit mAb [96A59L29] is for research use only and not for use in diagnostic or therapeutic procedures.

Protein Information

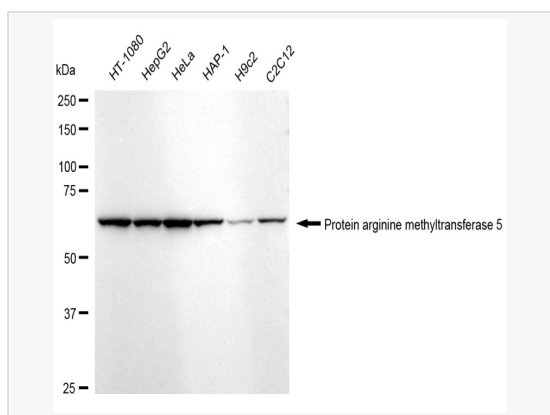
Synonyms	Protein Arginine Methyltransferase 5; SKB1Hs; HRMT1L5; SKB1; Histone-Arginine N-Methyltransferase PRMT5; Protein Arginine N-Methyltransferase 5; Shk1 Kinase-Binding Protein 1 Homolog; 72 kDa ICh-Binding Protein; Jak-Binding Protein 1; SKB1 Homolog; IBP72; JBP1; HMT1 HnRNP Methyltransferase-Like 5; Skb1 (S. Pombe) Homolog; SKB1 Homolog (S. Pombe); EC 2.1.1.320; HSL7.
Calculated MW	Calculated MW: 73 kDa, Observed MW: 73 kDa
Uniprot ID	O14744
Gene ID	10419
Background	Involved in regulation of cell cycle progression through G2 by negatively regulating Swe1p, a protein tyrosine kinase that phosphorylates and inhibits Cdc28p. An Hsl7p homologue, Skb1, was identified in fission yeast by virtue of its yeast two-hybrid interaction with Shk1p, a p21 (cdc42p/Rac) activated kinase (PAK).
Cellular Location	Cytoplasm. Nucleus.
Tissue Location	Ubiquitous.



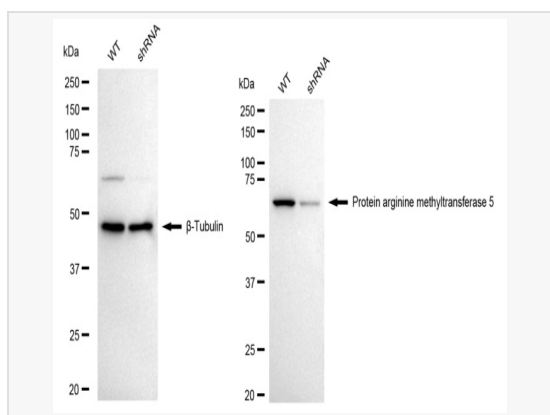
Flow cytometric analysis of Protein arginine methyltransferase 5 expression in HeLa cells using Protein arginine methyltransferase 5 antibody (R021044, 1:2,000). Green, isotype control; red, Protein arginine methyltransferase 5.



Immunocytochemical staining of HeLa cells with Protein arginine methyltransferase 5 antibody (R021044, 1:1,000). Nuclei were stained blue with DAPI; Protein arginine methyltransferase 5 was stained magenta with Alexa Fluor® 647. Images were taken using Leica stellaris 5. Protein abundance based on laser Intensity and smart gain: Medium. Scale bar: 20 μ m.



Western blotting analysis using Protein arginine methyltransferase 5 antibody (R021044). Total cell lysates (30 μ g) from various cell lines were loaded and separated by SDS-PAGE. The blot was incubated with Protein arginine methyltransferase 5 antibody (R021044, 1:10,000) and HRP-conjugated goat anti-rabbit secondary antibody (1:20,000) respectively. Image was developed using ECL Substrate Kit.



Western blotting analysis using protein arginine methyltransferase 5 antibody (R021044). Protein arginine methyltransferase 5 expression in wild-type (WT) and protein arginine methyltransferase 5 (PRMT5) shRNA knockdown (KD) HeLa cells with 20 μ g of total cell lysates. β -Tubulin serves as a loading control. The blot was incubated with protein arginine methyltransferase 5 antibody (R021044, 1:10,000) and HRP-conjugated goat anti-rabbit secondary antibody (1:20,000) respectively. Image was developed using ECL Substrate Kit.