

[KD Validated] Anti-PLCB3 Rabbit mAb

Purified Recombinant Rabbit Monoclonal Antibody

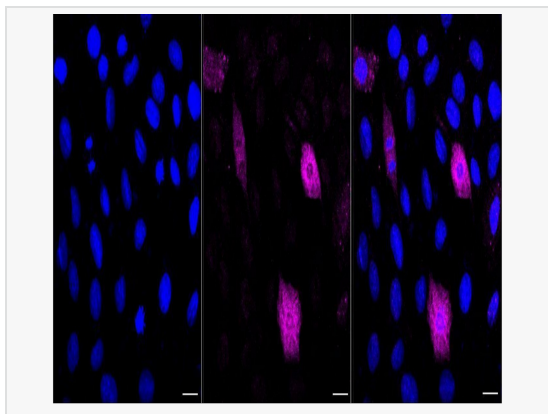
Catalog # R021007

Product Information

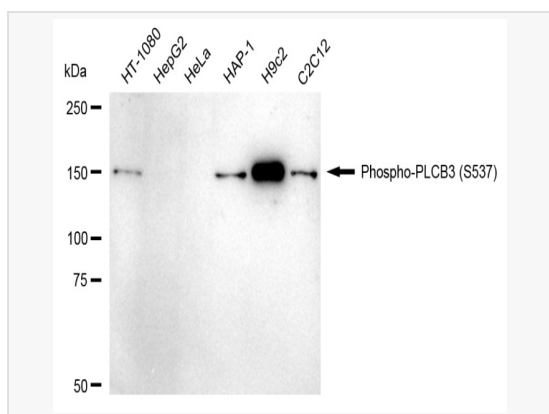
Application	WB, IF (Cell)/ICC
Reactivity	Human, Mouse, Rat
Dilution	WB 1:1,000~1:5,000; IF 1:100~1:1,000
Host	Rabbit
Clonality	Monoclonal
Clone No.	22P39Q97
Isotype	IgG
Label	Unconjugated
Immunogen	A synthesized peptide derived from human Phospho-PLCB3 (S537)
Format	Affinity purified monoclonal antibody supplied in PBS with 0.02% sodium azide and 50% glycerol, pH 7.3.
Storage	Shipped on wet ice. Store at -20°C. Stable for 12 months from date of receipt. Aliquoting is unnecessary for -20°C storage.
Precautions	[KD Validated] Anti-PLCB3 Rabbit mAb [22P39Q97] is for research use only and not for use in diagnostic or therapeutic procedures.

Protein Information

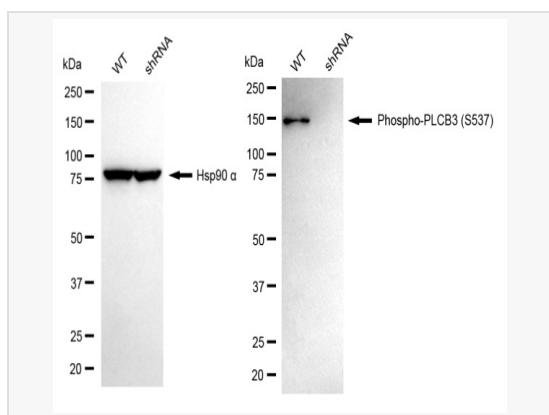
Synonyms	Phospholipase C Beta 3; 1-Phosphatidylinositol 4,5-Bisphosphate Phosphodiesterase Beta-3; Phospholipase C, Beta 3 (Phosphatidylinositol-Specific); Phosphoinositide Phospholipase C-Beta-3; EC 3.1.4.11; Phospholipase C-Beta-3; PLC Beta 3; PLC-Beta-3; SMDCD.
Calculated MW	Calculated MW: 139 kDa, Observed MW: 150 kDa
Uniprot ID	Q01970
Gene ID	5331
Background	This gene encodes a member of the phosphoinositide phospholipase C beta enzyme family that catalyze the production of the secondary messengers diacylglycerol and inositol 1,4,5-triphosphate from phosphatidylinositol in G-protein-linked receptor-mediated signal transduction. Alternative splicing results in multiple transcript variants.[provided by RefSeq, May 2010]
Cellular Location	Membrane.



Immunocytochemical staining of H9c2 cells with Phospho-PLCB3 (S537) antibody (R021007, 1:1,000). Nuclei were stained blue with DAPI; Phospho-PLCB3 (S537) was stained magenta with Alexa Fluor® 647. Images were taken using Leica stellaris 5. Protein abundance based on laser Intensity and smart gain: Medium. Scale bar, 20 μ m.



Western blotting analysis using Phospho-PLCB3 (S537) antibody (R021007). Total cell lysates (30 μ g) from various cell lines were loaded and separated by SDS-PAGE. The blot was incubated with Phospho-PLCB3 (S537) antibody (R021007, 1:5,000) and HRP-conjugated goat anti-rabbit secondary antibody (1:20,000) respectively. Image was developed using ECL Substrate Kit.



Western blotting analysis using phospho-PLCB3 (S537) antibody (R021007). Phospho-PLCB3 (S537) expression in wild-type (WT) and PLCB3 shRNA knockdown (KD) HT-1080 cells with 30 μ g of total cell lysates. Hsp90 α serves as a loading control. The blot was incubated with phospho-PLCB3 (S537) antibody (R021007, 1:5,000) and HRP-conjugated goat anti-rabbit secondary antibody (1:20,000) respectively. Image was developed using ECL Substrate Kit.