

[KD Validated] Anti-VEGFD Rabbit mAb

Purified Recombinant Rabbit Monoclonal Antibody

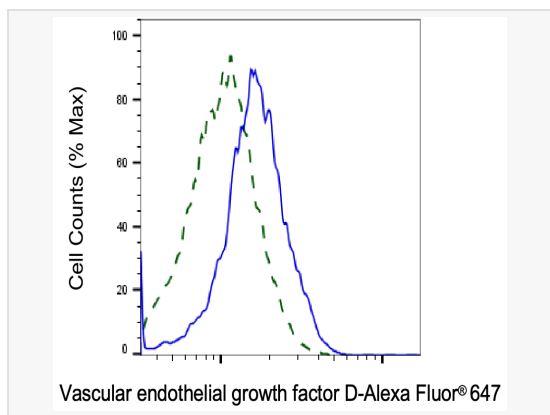
Catalog # R020960

Product Information

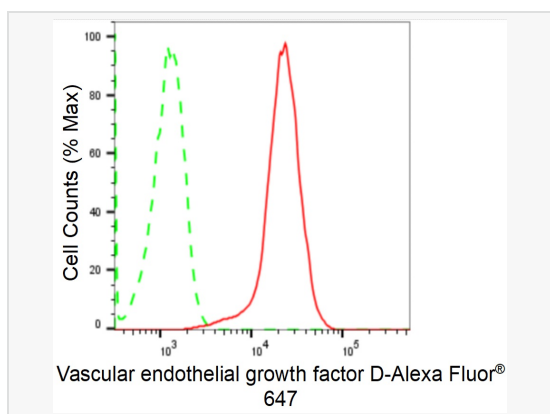
Application	WB, FC, IF (Cell)/ICC
Reactivity	Human, Mouse, Rat
Dilution	WB 1:1,000~1:5,000; FC 1:200~1:2,000; IF 1:100~1:1,000
Host	Rabbit
Clonality	Monoclonal
Clone No.	36S60E87
Isotype	IgG
Label	Unconjugated
Immunogen	A synthesized peptide derived from human beta VEGFD
Format	Affinity purified monoclonal antibody supplied in PBS with 0.02% sodium azide and 50% glycerol, pH 7.3.
Storage	Shipped on wet ice. Store at -20°C. Stable for 12 months from date of receipt. Aliquoting is unnecessary for -20°C storage.
Precautions	[KD Validated] Anti-VEGFD Rabbit mAb [36S60E87] is for research use only and not for use in diagnostic or therapeutic procedures.

Protein Information

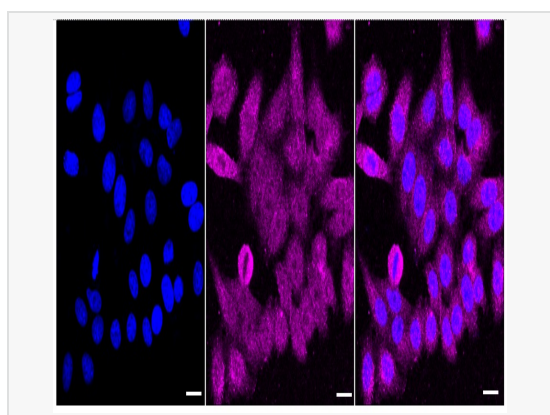
Synonyms	VEGFD; Vascular Endothelial Growth Factor D; VEGF-D; FIGF; C-Fos Induced Growth Factor (Vascular Endothelial Growth Factor D); C-Fos-Induced Growth Factor.
Calculated MW	Calculated MW: 40 kDa, Observed MW: 37 kDa
Uniprot ID	O43915
Gene ID	2277
Background	The protein encoded by this gene is a member of the platelet-derived growth factor/vascular endothelial growth factor (PDGF/VEGF) family and is active in angiogenesis, lymphangiogenesis, and endothelial cell growth. This secreted protein undergoes a complex proteolytic maturation, generating multiple processed forms which bind and activate VEGFR-2 and VEGFR-3 receptors. This protein is structurally and functionally similar to vascular endothelial growth factor C. Read-through transcription has been observed between this locus and the upstream PIR (GeneID 8544) locus. [provided by RefSeq, Feb 2011]
Cellular Location	Secreted.
Tissue Location	Highly expressed in lung, heart, small intestine and fetal lung, and at lower levels in skeletal muscle, colon, and pancreas.



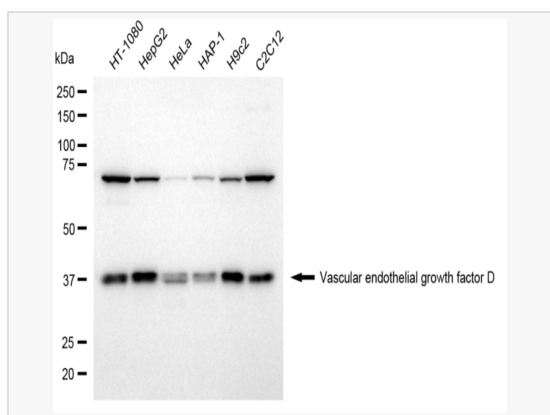
Validation of Vascular endothelial growth factor D knockdown using flow cytometry. Wild-type(WT, Blue) and knockdown(KD, Green) HeLa cells were stained with Vascular endothelial growth factor D antibody (R020960, 1:2,000) and analyzed using BD flow cytometer.



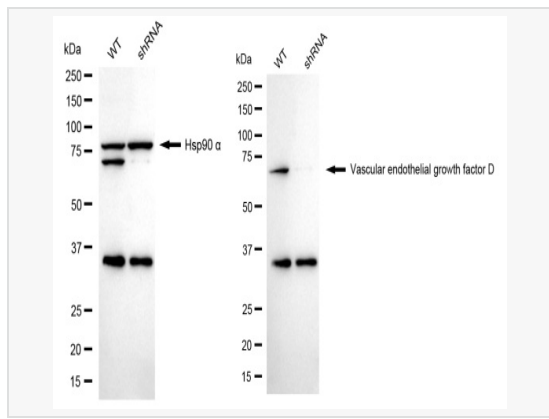
Flow cytometric analysis of Vascular endothelial growth factor D expression in HepG2 cells using Vascular endothelial growth factor D antibody (R020960, 1:2,000). Green, isotype control; red, Vascular endothelial growth factor D.



Immunocytochemical staining of HepG2 cells with Vascular endothelial growth factor D antibody (R020960, 1:1,000). Nuclei were stained blue with DAPI; Vascular endothelial growth factor D was stained magenta with Alexa Fluor® 647. Images were taken using Leica stellaris 5. Protein abundance based on laser Intensity and smart gain: Medium. Scale bar: 20 μ m.



Western blotting analysis using Vascular endothelial growth factor D antibody (R020960). Total cell lysates (30 μ g) from various cell lines were loaded and separated by SDS-PAGE. The blot was incubated with Vascular endothelial growth factor D antibody (R020960, 1:5,000) and HRP-conjugated goat anti-rabbit secondary antibody (1:20,000) respectively. Image was developed using ECL Substrate Kit.



Western blotting analysis using anti-Vascular endothelial growth factor D antibody (R020960). Vascular endothelial growth factor D expression in wild type (WT) and Vascular endothelial growth factor D shRNA knockdown (KD) HeLa cells with 20 μ g of total cell lysates. Hsp90 α serves as a loading control. The blot was incubated with anti-Vascular endothelial growth factor D antibody (R020960, 1:5,000) and HRP-conjugated goat anti-rabbit secondary antibody (1:20,000) respectively. Image was developed using ECL Substrate Kit.