

## [KD Validated] Anti-BUB1B Rabbit pAb

Purified Rabbit Polyclonal Antibody

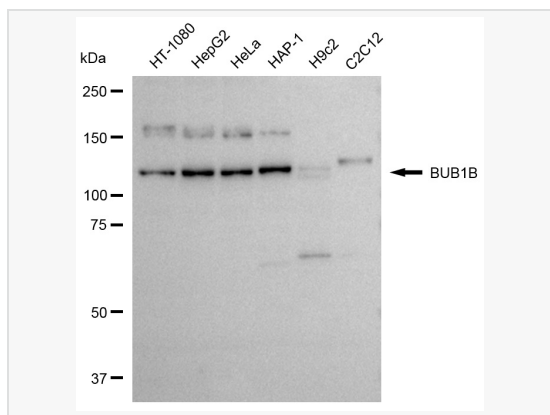
Catalog # P020897

### Product Information

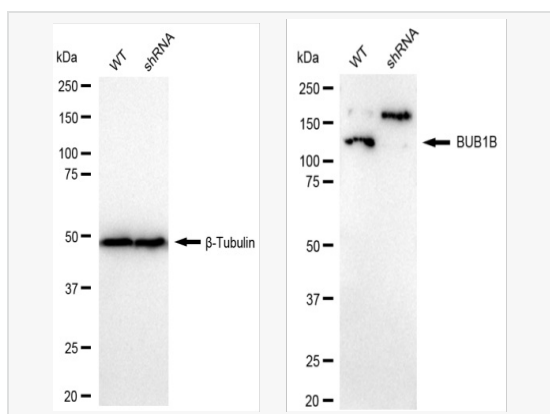
Application	WB
Reactivity	Human, Mouse, Rat
Dilution	WB 1:2,500~1:5,000
Host	Rabbit
Clonality	Polyclonal
Isotype	IgG
Label	Unconjugated
Immunogen	A synthesized peptide derived from human BUB1B
Format	Affinity purified polyclonal antibody supplied in PBS with 0.02% sodium azide and 50% glycerol, pH 7.3.
Storage	Shipped on wet ice. Store at -20°C. Stable for 12 months from date of receipt. Aliquoting is unnecessary for -20°C storage.
Precautions	[KD Validated] Anti-BUB1B Rabbit pAb is for research use only and not for use in diagnostic or therapeutic procedures.

### Protein Information

Synonyms	BUB1B; BUB1 Mitotic Checkpoint Serine/Threonine Kinase B; BUBR1; MAD3L; SSK1; Bub1A; Mitotic Checkpoint Serine/Threonine-Protein Kinase BUB1 Beta; MAD3/BUB1-Related Protein Kinase; Mitotic Checkpoint Kinase MAD3L; HBUBR1; Budding Uninhibited By Benzimidazoles 1 (Yeast Homolog), Beta; Budding Uninhibited By Benzimidazoles 1 Homolog Beta (Yeast); Budding Uninhibited By Benzimidazoles 1 Homolog Beta; BUB1B, Mitotic Checkpoint Serine/Threonine Kinase; Protein SSK1; EC 2.7.11.1; BUB1beta; MVA1.
Calculated MW	Calculated MW: 120 kDa, Observed MW: 130 kDa
Uniprot ID	O60566
Gene ID	701
Background	Essential component of the mitotic checkpoint. Required for normal mitosis progression. The mitotic checkpoint delays anaphase until all chromosomes are properly attached to the mitotic spindle. One of its checkpoint functions is to inhibit the activity of the anaphase-promoting complex/cyclosome (APC/C) by blocking the binding of CDC20 to APC/C, independently of its kinase activity. The other is to monitor kinetochore activities that depend on the kinetochore motor CENPE. Required for kinetochore localization of CENPE.



Western blotting analysis using BUB1B antibody (P020897). Total cell lysates (30  $\mu$ g) from various cell lines were loaded and separated by SDS-PAGE. The blot was incubated with BUB1B antibody (P020897, 1:5,000) and HRP-conjugated goat anti-rabbit secondary antibody (1:20,000) respectively. Image was developed using ECL Substrate Kit.



Western blotting analysis using BUB1B kinase antibody (P020897). BUB1B kinase expression in wild type (WT) and BUB1B shRNA knockdown (KD) HeLa cells with 30  $\mu$ g of total cell lysates.  $\beta$ -Tubulin serves as a loading control. The blot was incubated with BUB1B kinase antibody (P020897, 1:5,000) and HRP-conjugated goat anti-rabbit secondary antibody (1:20,000) respectively. Image was developed using ECL Substrate Kit.