

## [KD Validated] Anti-BCL10 Mouse mAb

Purified Recombinant Mouse Monoclonal Antibody

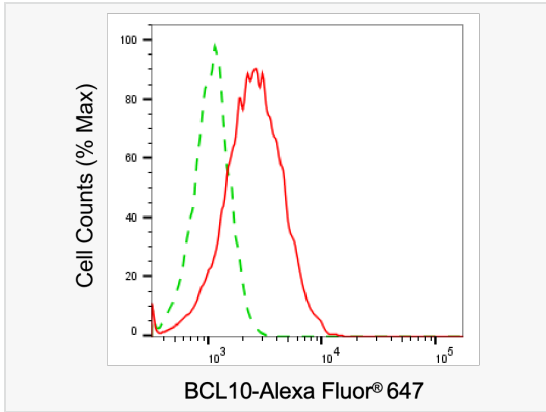
Catalog # M020886

### Product Information

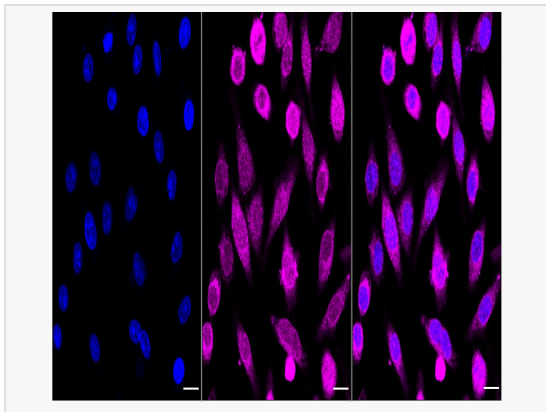
Application	WB, FC, IF (Cell)/ICC
Reactivity	Human, Mouse, Rat
Dilution	WB 1:1,000~1:5,000; FC 1:200~1:2,000; IF 1:100~1:1,000
Host	Mouse
Clonality	Monoclonal
Clone No.	63K39K94
Isotype	IgG
Label	Unconjugated
Immunogen	Recombinant protein of human BCL10
Format	Affinity purified monoclonal antibody supplied in PBS with 0.02% sodium azide and 50% glycerol, pH 7.3.
Storage	Shipped on wet ice. Store at -20°C. Stable for 12 months from date of receipt. Aliquoting is unnecessary for -20°C storage.
Precautions	[KD Validated] Anti-BCL10 Mouse mAb [63K39K94] is for research use only and not for use in diagnostic or therapeutic procedures.

### Protein Information

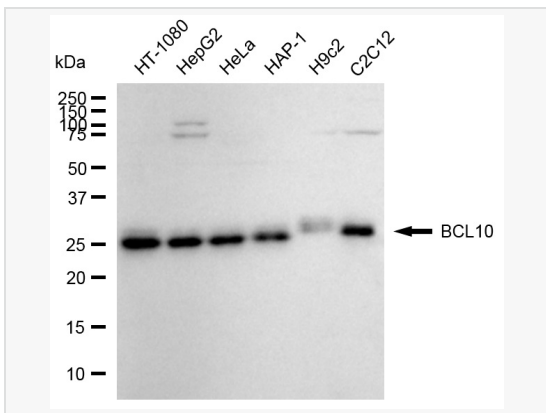
Synonyms	BCL10; BCL10 Immune Signaling Adaptor; CIPER; C-E10; ME10; CLAP; CARMEN; CED-3/ICH-1 Prodomain Homologous E10-Like Regulator; Mammalian CARD-Containing Adapter Molecule E10; CARD-Containing Molecule Enhancing NF-Kappa-B; Caspase-Recruiting Domain-Containing Protein; CARD-Containing Apoptotic Signaling Protein; CARD Containing Molecule Enhancing NF-KB; CARD-Containing Proapoptotic Protein; CARD-Like Apoptotic Protein; B-Cell Lymphoma/Leukemia 10; Cellular Homolog Of VCARMEN; B Cell CLL/Lymphoma 10; Cellular-E10; CCARMEN; HCLAP; BCL10, Immune Signaling Adaptor; B-Cell CLL/Lymphoma 10; Bcl-10; IMD37.
Calculated MW	Calculated MW: 26 kDa; Observed MW: 28 kDa
Uniprot ID	O95999
Gene ID	8915
Background	Promotes apoptosis, pro-caspase-9 maturation and activation of NF-kappa-B via NIK and IKK. May be an adaptor protein between upstream TNFR1-TRADD-RIP complex and the downstream NIK-IKK-IKAP complex. Is a substrate for MALT1.



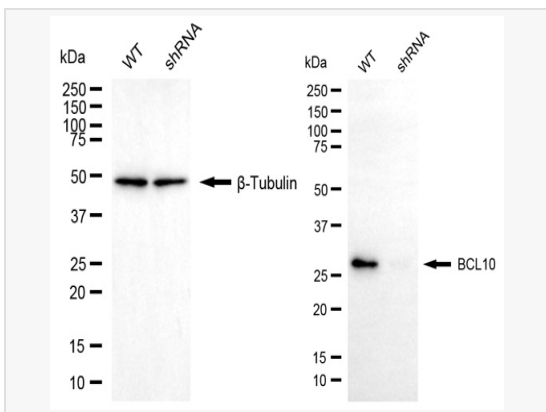
Flow cytometric analysis of BCL10 expression in HepG2 cells using BCL10 antibody (M020886, 1:2,000). Green, isotype control; red, BCL10.



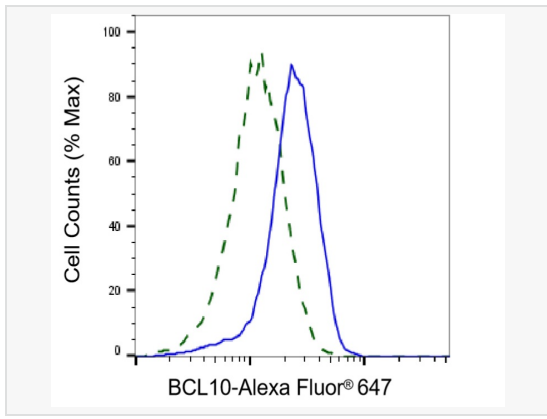
Immunocytochemical staining of HepG2 cells with BCL10 antibody (M020886, 1:1,000). Nuclei were stained blue with DAPI; BCL10 was stained magenta with Alexa Fluor® 647. Images were taken using Leica stellaris 5. Protein abundance based on laser Intensity and smart gain: Medium. Scale bar, 20  $\mu$ m.



Western blotting analysis using BCL10 antibody (M020886). Total cell lysates (30  $\mu$ g) from various cell lines were loaded and separated by SDS-PAGE. The blot was incubated with BCL10 antibody (M020886, 1:5,000) and HRP-conjugated goat anti-mouse secondary antibody (1:20,000) respectively. Image was developed using ECL Substrate Kit.



Western blotting analysis using BCL10 antibody (M020886). BCL10 expression in wild-type (WT) and BCL10 shRNA knockdown (KD) HeLa cells with 20  $\mu$ g of total cell lysates.  $\beta$ -Tubulin serves as a loading control. The blot was incubated with BCL10 antibody (M020886, 1:5,000) and HRP-conjugated goat anti-mouse secondary antibody (1:20,000) respectively. Image was developed using ECL Substrate Kit.



Validation of BCL10 knockdown using flow cytometry. Wild-type(WT, Blue) and knockdown(KD, Green) HeLa cells were stained with BCL10 antibody (M020886, 1:2,000) and analyzed using BD flow cytometer.