

[KD Validated] Anti-TCP1 Rabbit mAb

Purified Recombinant Rabbit Monoclonal Antibody

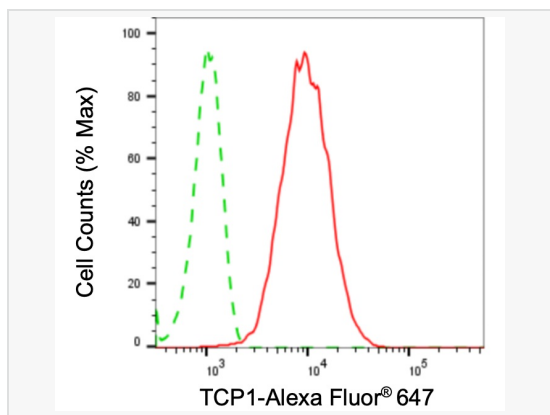
Catalog # R020877

Product Information

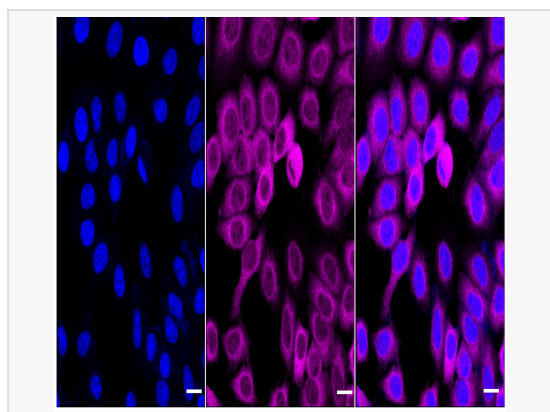
Application	WB, FC, IF (Cell)/ICC
Reactivity	Human
Dilution	WB 1:1,000~1:5,000; FC 1:200~1:2,000; IF 1:100~1:1,000
Host	Rabbit
Clonality	Monoclonal
Clone No.	65C12C68
Isotype	IgG
Label	Unconjugated
Immunogen	A synthesized peptide derived from human TCP1 alpha
Format	Affinity purified monoclonal antibody supplied in PBS with 0.02% sodium azide and 50% glycerol, pH 7.3.
Storage	Shipped on wet ice. Store at -20°C. Stable for 12 months from date of receipt. Aliquoting is unnecessary for -20°C storage.
Precautions	[KD Validated] Anti-TCP1 Rabbit mAb [65C12C68] is for research use only and not for use in diagnostic or therapeutic procedures.

Protein Information

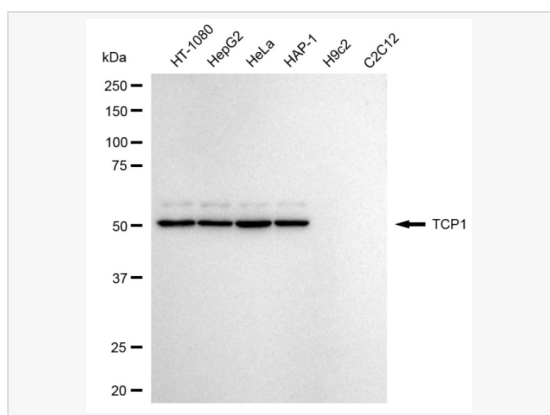
Synonyms	TCP1; T-Complex 1; CCT1; D6S230E; Ccta; T-Complex Protein 1 Subunit Alpha; TCP-1-Alpha; CCT-Alpha; T-Complex Protein 1, Alpha Subunit; Tailless Complex Polypeptide 1; T-Complex 1 Protein; CCTA.
Calculated MW	Calculated MW: 60 kDa, Observed MW: 50 kDa
Uniprot ID	P17987
Gene ID	6950
Background	The protein encoded by this gene is a molecular chaperone that is a member of the chaperonin containing TCP1 complex (CCT), also known as the TCP1 ring complex (TRiC). This complex consists of two identical stacked rings, each containing eight different proteins. Unfolded polypeptides enter the central cavity of the complex and are folded in an ATP-dependent manner. The complex folds various proteins, including actin and tubulin. Alternate transcriptional splice variants of this gene, encoding different isoforms, have been characterized. In addition, three pseudogenes that appear to be derived from this gene have been found. [provided by RefSeq, Jun 2010]
Cellular Location	Cytoplasm.Cytosol.Cytoplasm.Cytoskeleton.Microtubule organizing center.Centrosome.



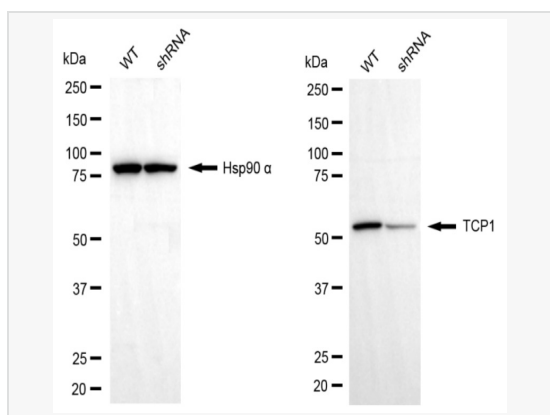
Flow cytometric analysis of TCP1 expression in HepG2 cells using TCP1 antibody (R020877, 1:2,000). Green, isotype control; red, TCP1.



Immunocytochemical staining of HepG2 cells with TCP1 antibody (R020877, 1:1,000). Nuclei were stained blue with DAPI; TCP1 was stained magenta with Alexa Fluor® 647. Images were taken using Leica stellaris 5. Protein abundance based on laser Intensity and smart gain: High. Scale bar: 20 µm.



Western blotting analysis using TCP1 antibody (R020877). Total cell lysates (30 µg) from various cell lines were loaded and separated by SDS-PAGE. The blot was incubated with TCP1 antibody (R020877, 1:5,000) and HRP-conjugated goat anti-rabbit secondary antibody (1:20,000) respectively. Image was developed using ECL Substrate Kit.



Western blotting analysis using TCP1 antibody (R020877). TCP1 expression in wild type (WT) and TCP1 shRNA knockdown (KD) HT-1080 cells with 20 µg of total cell lysates. Hsp90 α serves as a loading control. The blot was incubated with TCP1 antibody (R020877, 1:5,000) and HRP-conjugated goat anti-rabbit secondary antibody (1:20,000) respectively. Image was developed using ECL Substrate Kit.