

## [KD Validated] Anti-EXOSC1 Mouse mAb

Purified Recombinant Mouse Monoclonal Antibody

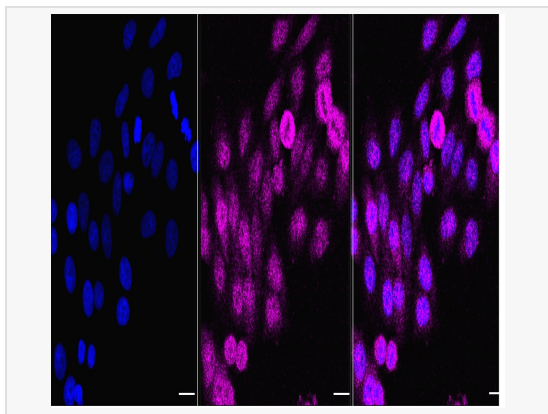
Catalog # M020629

### Product Information

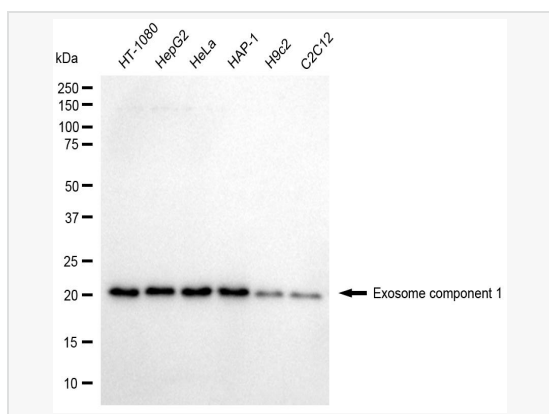
|             |   |
|-------------|---|
| Application | WB, IF (Cell)/ICC   |
| Reactivity  | Human, Mouse, Rat   |
| Dilution    | WB 1:500~1:2,500; IF 1:100~1:1,000  |
| Host        | Mouse   |
| Clonality   | Monoclonal  |
| Clone No.   | 23D54F40  |
| Isotype     | IgG   |
| Label       | Unconjugated  |
| Immunogen   | Recombinant protein of human EXOSC1   |
| Format      | Affinity purified monoclonal antibody supplied in PBS with 0.02% sodium azide and 50% glycerol, pH 7.3.                           |
| Storage     | Shipped on wet ice. Store at -20°C. Stable for 12 months from date of receipt. Aliquoting is unnecessary for -20°C storage.       |
| Precautions | [KD Validated] Anti-EXOSC1 Mouse mAb [23D54F40] is for research use only and not for use in diagnostic or therapeutic procedures. |

### Protein Information

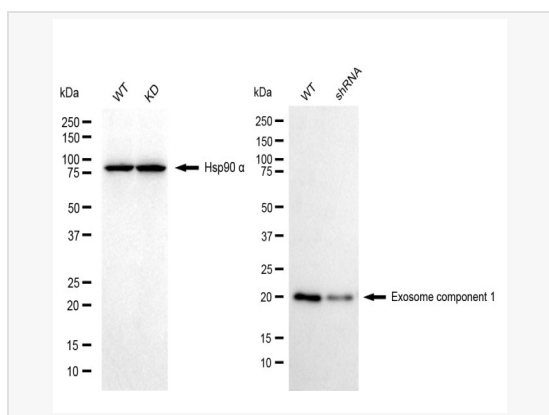
|               |   |
|---------------|---|
| Synonyms      | EXOSC1; Exosome Component 1; CSL4; CGI-108; Csl4p; Ski4p; SKI4; P13; Exosome Complex Component CSL4; HCs14p; Homolog Of Yeast Exosomal Core Protein CSL4; CSL4 Exosomal Core Protein Homolog (Yeast); 3'-5' Exoribonuclease CSL4 Homolog; Exosomal Core Protein CSL4; PCHIF.  |
| Calculated MW | Calculated MW: 21 kDa; Observed MW: 21 kDa  |
| Uniprot ID    | Q9Y3B2  |
| Gene ID       | 51013   |
| Background    | This gene encodes a core component of the exosome. The mammalian exosome is required for rapid degradation of AU rich element-containing RNAs but not for poly(A) shortening. The association of this protein with the exosome is mediated by protein-protein interactions with ribosomal RNA-processing protein 42 and ribosomal RNA-processing protein 46. Alternative splicing of this gene results in multiple transcript variants. |



Immunocytochemical staining of HepG2 cells with Exosome component 1 antibody (M020629, 1:500) . Nuclei were stained blue with DAPI; Exosome component 1 was stained magenta with Alexa Fluor® 647. Images were taken using Leica stellaris 5. Protein abundance based on laser Intensity and smart gain: Low. Scale bar, 20  $\mu$ m.



Western blotting analysis using exosome component 1 antibody (M020629). Total cell lysates (30  $\mu$ g) from various cell lines were loaded and separated by SDS-PAGE. The blot was incubated with exosome component 1 antibody (M020629, 1:2,500) and HRP-conjugated goat anti-mouse secondary antibody (1:20,000) respectively. Image was developed using ECL Substrate Kit.



Western blotting analysis using exosome component 1 antibody (M020629). Exosome component 1 expression in wild-type (WT) and exosome component 1 (EXOSC1) shRNA knockdown (KD) HeLa cells with 20  $\mu$ g of total cell lysates. Hsp90  $\alpha$  serves as a loading control. The blot was incubated with exosome component 1 antibody (M020629, 1:2,500) and HRP-conjugated goat anti-mouse secondary antibody (1:20,000) respectively. Image was developed using ECL Substrate Kit.