

[KD Validated] Anti-GBE1 Mouse mAb

Purified Recombinant Mouse Monoclonal Antibody

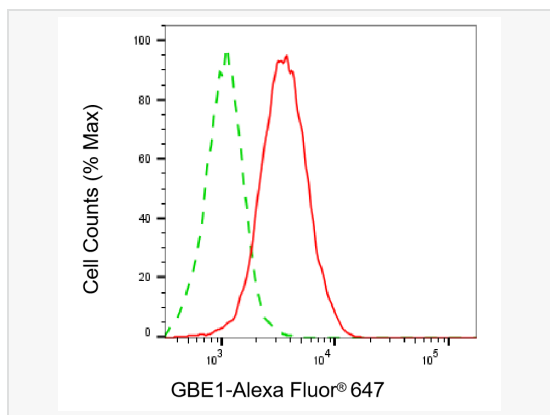
Catalog # M020615

Product Information

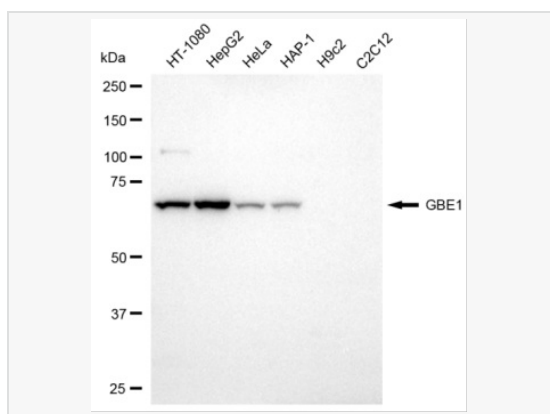
Application	WB, FC
Reactivity	Human
Dilution	WB 1:500~1:2,500; FC 1:100~1:1,000
Host	Mouse
Clonality	Monoclonal
Clone No.	15E43S34
Isotype	IgG
Label	Unconjugated
Immunogen	Recombinant protein of human GBE1
Format	Affinity purified monoclonal antibody supplied in PBS with 0.02% sodium azide and 50% glycerol, pH 7.3.
Storage	Shipped on wet ice. Store at -20°C. Stable for 12 months from date of receipt. Aliquoting is unnecessary for -20°C storage.
Precautions	[KD Validated] Anti-GBE1 Mouse mAb [15E43S34] is for research use only and not for use in diagnostic or therapeutic procedures.

Protein Information

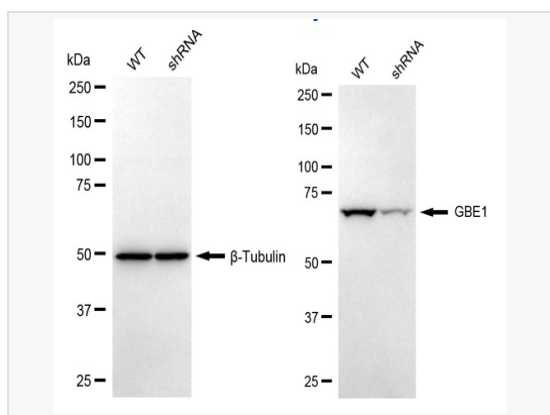
Synonyms	GBE1; 1,4-Alpha-Glucan Branching Enzyme 1; Glucan (1,4-Alpha-), Branching Enzyme 1; 1,4-Alpha-Glucan-Branched Enzyme; Glycogen Branching Enzyme; Brancher Enzyme; EC 2.4.1.18; Amylo-(1,4 To 1,6) Transglucosidase; Amylo-(1,4 To 1,6) Transglycosylase; Glycogen Storage Disease Type IV; Glycogen-Branched Enzyme; Andersen Disease; APBD; GSD4; GBE.
Calculated MW	Calculated MW: 80 kDa; Observed MW: 70 kDa
Uniprot ID	Q04446
Gene ID	2632
Background	The protein encoded by this gene is a glycogen branching enzyme that catalyzes the transfer of alpha-1,4-linked glucosyl units from the outer end of a glycogen chain to an alpha-1,6 position on the same or a neighboring glycogen chain. Branching of the chains is essential to increase the solubility of the glycogen molecule and, consequently, in reducing the osmotic pressure within cells. Highest level of this enzyme are found in liver and muscle. Mutations in this gene are associated with glycogen storage disease IV (also known as Andersen's disease).



Flow cytometric analysis of GBE1 expression in HepG2 cells using GBE1 antibody (M020615, 1:1,000). Green, isotype control; red, GBE1.



Western blotting analysis using GBE1 antibody (M020615). Total cell lysates (30 μ g) from various cell lines were loaded and separated by SDS-PAGE. The blot was incubated with GBE1 antibody (M020615, 1:2,500) and HRP-conjugated goat anti-mouse secondary antibody (1:20,000) respectively. Image was developed using ECL Substrate Kit.



Western blotting analysis using GBE1 antibody (M020615). GBE1 expression in wild-type (WT) and GBE1 shRNA knockdown (KD) HeLa cells with 20 μ g of total cell lysates. β -Tubulin serves as a loading control. The blot was incubated with GBE1 antibody (M020615, 1:2,500) and HRP-conjugated goat anti-mouse secondary antibody (1:20,000) respectively. Image was developed using ECL Substrate Kit.