

[KD Validated] Anti-SH3GL1 Mouse mAb

Purified Recombinant Mouse Monoclonal Antibody

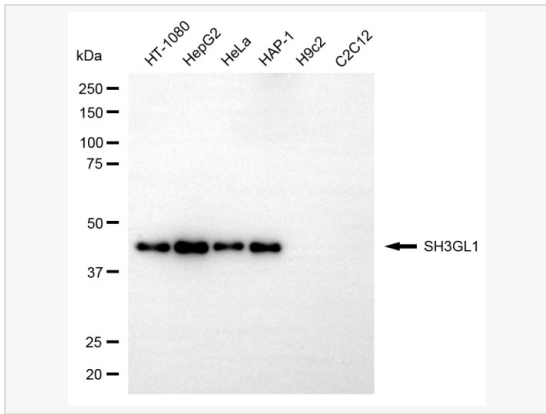
Catalog # M020512

Product Information

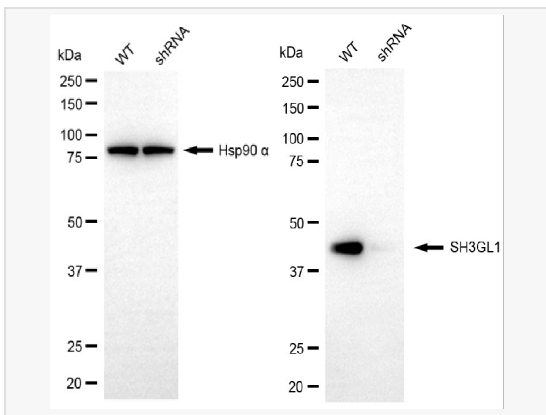
Application	WB, FC
Reactivity	Human
Dilution	WB 1:500~1:2,500; FC 1:1,000
Host	Mouse
Clonality	Monoclonal
Clone No.	99M76M88
Isotype	IgG
Label	Unconjugated
Immunogen	Recombinant protein of human SH3GL1
Format	Affinity purified monoclonal antibody supplied in PBS with 0.02% sodium azide and 50% glycerol, pH 7.3.
Storage	Shipped on wet ice. Store at -20°C. Stable for 12 months from date of receipt. Aliquoting is unnecessary for -20°C storage.
Precautions	[KD Validated] Anti-SH3GL1 Mouse mAb [99M76M88] is for research use only and not for use in diagnostic or therapeutic procedures.

Protein Information

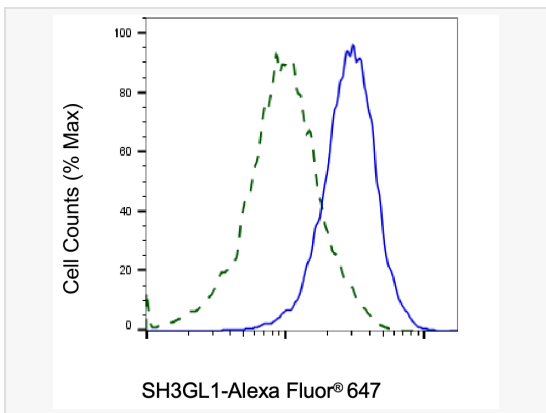
Synonyms	SH3GL1; SH3 Domain Containing GRB2 Like 1, Endophilin A2; SH3D2B; CNSA1; EEN; SH3P8; Extra Eleven-Nineteen Leukemia Fusion Gene Protein; SH3 Domain-Containing GRB2-Like Protein 1; SH3-Containing Grb-2-Like 1 Protein; Extra 11-19 Leukemia Fusion; EEN Fusion Partner Of MLL; SH3-Domain GRB2-Like 1; SH3 Domain Protein 2B; Endophilin-A2; Endophilin-2; MGC111371; SH3 Domain Containing GRB2 Like 1; SH3-Containing Protein EEN; SH3 Domain GRB2-Like 1; Fusion Partner Of MLL; Endophilin A2.
Calculated MW	Calculated MW: 41 kDa; Observed MW: 45 kDa
Uniprot ID	Q99961
Gene ID	6455
Background	This gene encodes a member of the endophilin family of Src homology 3 domain-containing proteins. The encoded protein is involved in endocytosis and may also play a role in the cell cycle. Overexpression of this gene may play a role in leukemogenesis, and the encoded protein has been implicated in acute myeloid leukemia as a fusion partner of the myeloid-lymphoid leukemia protein. Pseudogenes of this gene are located on the long arm of chromosomes 11 and 17. Alternatively spliced transcript variants encoding multiple isoforms have been observed for this gene.



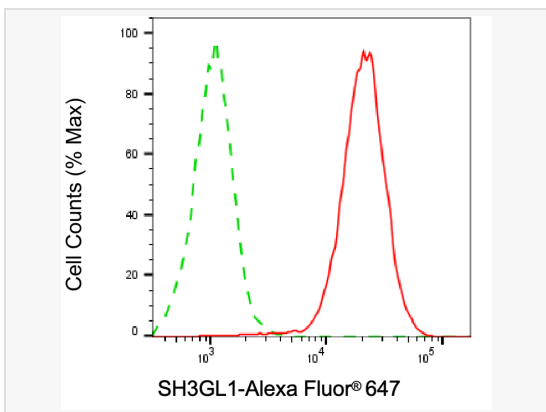
Western blotting analysis using SH3GL1 antibody (M020512). Total cell lysates (30 μ g) from various cell lines were loaded and separated by SDS-PAGE. The blot was incubated with SH3GL1 antibody (M020512, 1:2,500) and HRP-conjugated goat anti-mouse secondary antibody (1:20,000) respectively. Image was developed using ECL Substrate Kit.



Western blotting analysis using SH3GL1 antibody (M020512). SH3GL1 expression in wild-type (WT) and SH3GL1 shRNA knockdown (KD) HeLa cells with 30 μ g of total cell lysates. Hsp90 α serves as a loading control. The blot was incubated with SH3GL1 antibody (M020512, 1:1,000) and HRP-conjugated goat anti-mouse secondary antibody (1:20,000) respectively. Image was developed using ECL Substrate Kit.



Validation of SH3GL1 knockdown using flow cytometry. Wild-type(WT, Blue) and knockdown(KD, Green) HeLa cells were stained with SH3GL1 antibody (M020512, 1:2,000) and analyzed using BD flow cytometer.



Flow cytometric analysis of SH3GL1 expression in HepG2 cells using SH3GL1 antibody (M020512, 1:1,000). Green, isotype control; red, SH3GL1.