

[KD Validated] Anti-ARHGEF1 Mouse oAb

Purified Mouse Oligoclonal Antibody

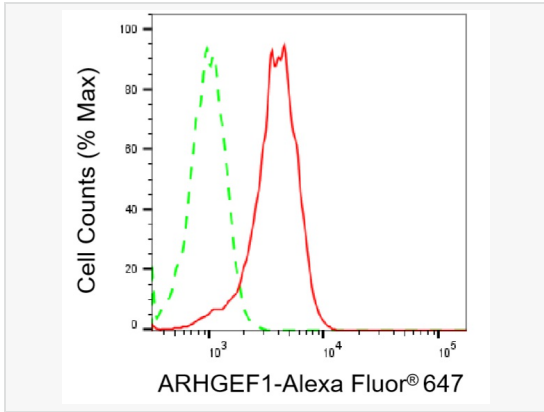
Catalog # M020426

Product Information

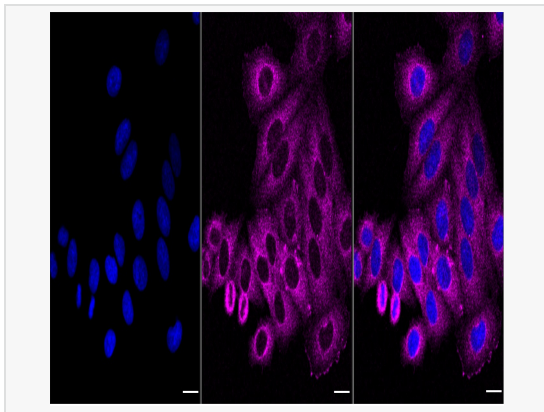
Application	WB, FC, IF (Cell)/ICC, IHC-P/IF (Tissue-P)
Reactivity	Human
Dilution	WB 1:500~1:2,500; FC 1:200~1:2,000; IF 1:100~1:1,000; IHC-P 1:100~1:200
Host	Mouse
Clonality	Oligoclonal
Isotype	IgG
Label	Unconjugated
Immunogen	Recombinant protein of human ARHGEF1
Format	Affinity purified Oligoclonal antibody supplied in PBS with 0.02% sodium azide and 50% glycerol, pH 7.3.
Storage	Shipped on wet ice. Store at -20°C. Stable for 12 months from date of receipt. Aliquoting is unnecessary for -20°C storage.
Precautions	[KD Validated] Anti-ARHGEF1 Mouse oAb is for research use only and not for use in diagnostic or therapeutic procedures.

Protein Information

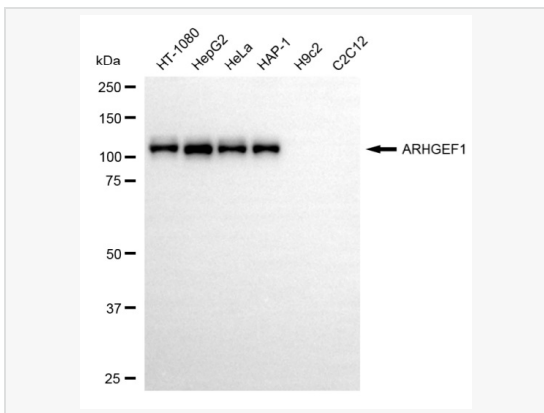
Synonyms	ARHGEF1; Rho Guanine Nucleotide Exchange Factor 1; P115-RHOGEF; SUB1.5; LBCL2; Rho Guanine Nucleotide Exchange Factor (GEF) 1; 115 KDa Guanine Nucleotide Exchange Factor; P115RhoGEF; 115-KD Protein; Lsc Homolog; P115-RhoGEF; Sub1.5; IMD62; GEF1; LSC.
Calculated MW	Calculated MW: 102 kDa; Observed MW: 110-120kDa
Uniprot ID	Q92888
Gene ID	9138
Background	Rho GTPases play a fundamental role in numerous cellular processes that are initiated by extracellular stimuli that work through G protein coupled receptors. The encoded protein may form complex with G proteins and stimulate Rho-dependent signals. Multiple alternatively spliced transcript variants have been found for this gene, but the full-length nature of some variants has not been defined.



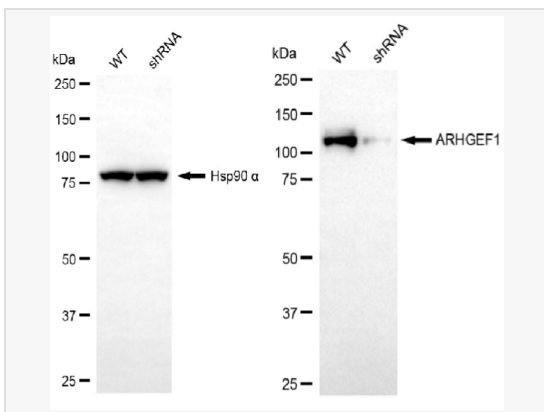
Flow cytometric analysis of ARHGEF1 expression in HepG2 cells using ARHGEF1 antibody (M020426, 1:2,000). Green, isotype control; red, ARHGEF1.



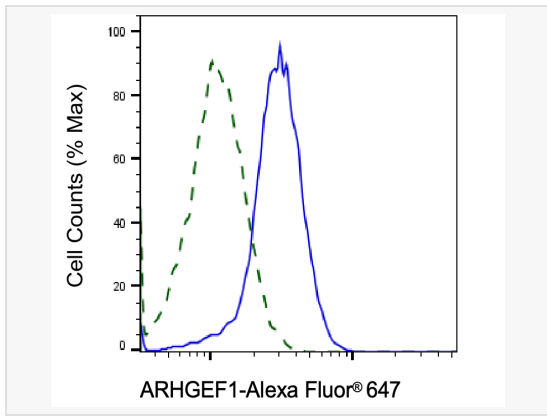
Immunocytochemical staining of HepG2 cells with ARHGEF1 antibody (M020426, 1:1,000). Nuclei were stained blue with DAPI; ARHGEF1 was stained magenta with Alexa Fluor® 647. Images were taken using Leica stellaris 5. Protein abundance based on laser Intensity and smart gain: Medium. Scale bar, 20 μm .



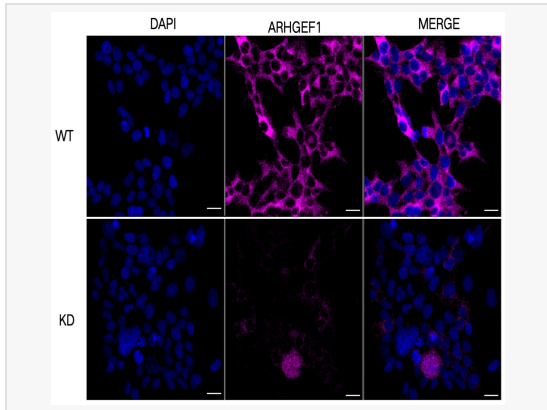
Western blotting analysis using ARHGEF1 antibody (M020426). Total cell lysates (30 μg) from various cell lines were loaded and separated by SDS-PAGE. The blot was incubated with ARHGEF1 antibody (M020426, 1:2,000) and HRP-conjugated goat anti-mouse secondary antibody (1:20,000) respectively. Image was developed using ECL Substrate Kit.



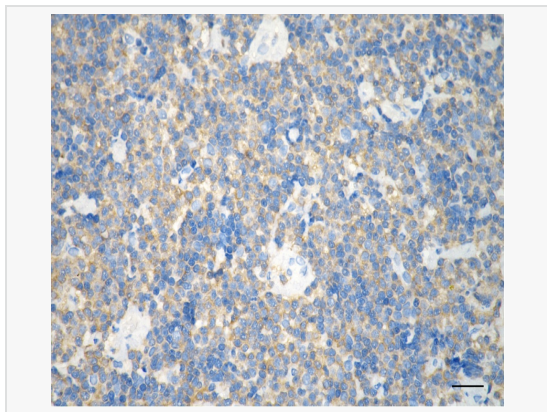
Western blotting analysis using ARHGEF1 antibody (M020426). ARHGEF1 expression in wild-type (WT) and ARHGEF1 shRNA knockdown (KD) HeLa cells with 20 μg of total cell lysates. Hsp90 α serves as a loading control. The blot was incubated with ARHGEF1 antibody (M020426, 1:2,000) and HRP-conjugated goat anti-mouse secondary antibody (1:20,000) respectively. Image was developed using ECL Substrate Kit.



Validation of ARHGEF1 knockdown using flow cytometry. Wild-type(WT, Blue) and knockdown(KD, Green) HeLa cells were stained with ARHGEF1 antibody (M020426, 1:2,000) and analyzed using BD flow cytometer.



Immunocytochemical staining of HeLa cells using ARHGEF1 antibody (M020426, 1:1,000), Top panel: wild-type (WT); Bottom panel: ARHGEF1 shRNA knockdown (KD). Nuclei were stained blue with DAPI; Acyl-CoA dehydrogenase short chain was stained magenta with Alexa Fluor® 647. Scale bar, 20 μ m.



Immunohistochemistry was performed on paraffin-embedded human lymphoma using ARHGEF1 antibody (M020426, 1:200). Antigen retrieval was done in sodium citrate buffer (pH 6.0). DAB was used for detection, with hematoxylin counterstaining. Images were acquired using a Nikon Ci-L Plus microscope (40 \times objective). Scale bar: 25 μ m.