

[KD Validated] Anti-FLOT1 Rabbit mAb

Purified Recombinant Rabbit Monoclonal Antibody

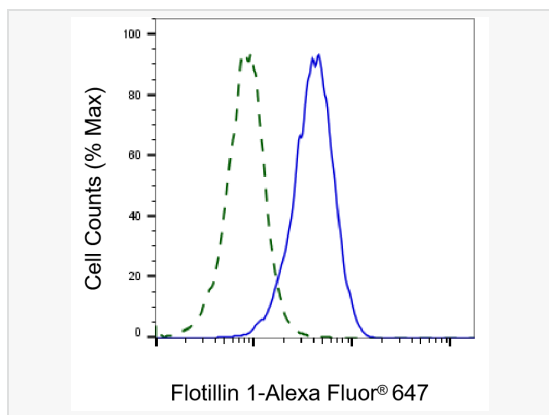
Catalog # R020309

Product Information

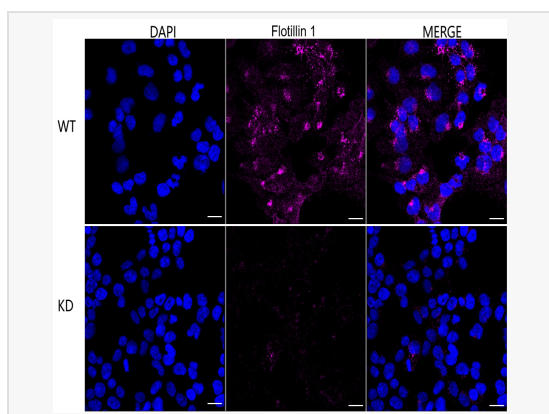
Application	WB, FC, IF (Cell)/ICC
Reactivity	Human, Mouse, Rat
Dilution	WB 1:2,000~1:10,000; FC 1:200~1:2,000; IF 1:100~1:1,000
Host	Rabbit
Clonality	Monoclonal
Clone No.	43A69F90
Isotype	IgG
Label	Unconjugated
Immunogen	A synthesized peptide derived from human Flotillin 1
Format	Affinity purified monoclonal antibody supplied in PBS with 0.02% sodium azide and 50% glycerol, pH 7.3.
Storage	Shipped on wet ice. Store at -20°C. Stable for 12 months from date of receipt. Aliquoting is unnecessary for -20°C storage.
Precautions	[KD Validated] Anti-FLOT1 Rabbit mAb [43A69F90] is for research use only and not for use in diagnostic or therapeutic procedures.

Protein Information

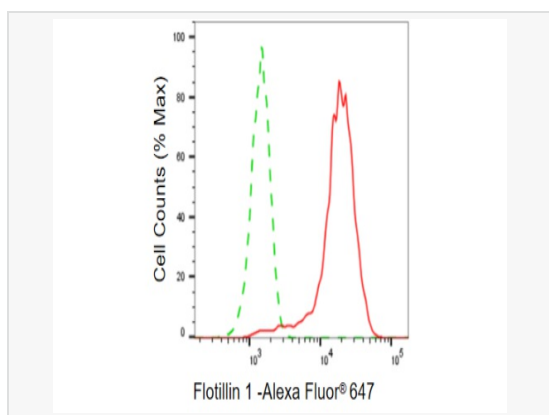
Synonyms	Flotillin 1; Flotillin-1; Integral Membrane Component Of Caveolae.
Calculated MW	Calculated MW: 47 kDa, Observed MW: 48 kDa
Uniprot ID	O75955
Gene ID	10211
Background	May act as a scaffolding protein within caveolar membranes, functionally participating in formation of caveolae or caveolae-like vesicles.



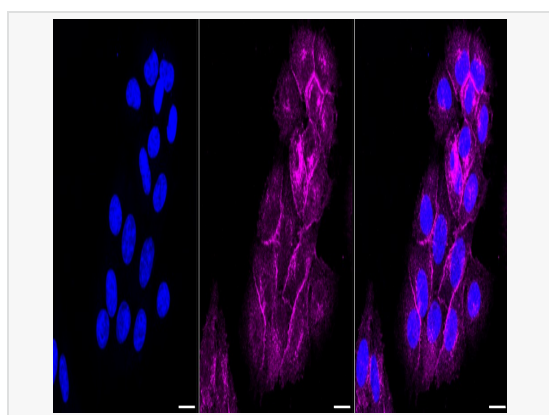
Validation of Flotillin 1 knockdown using flow cytometry. Wild-type(WT, Blue) and knockdown(KD, Green) HeLa cells were stained with Flotillin 1 antibody (R020309, 1:2,000) and analyzed using CytoFLEX.



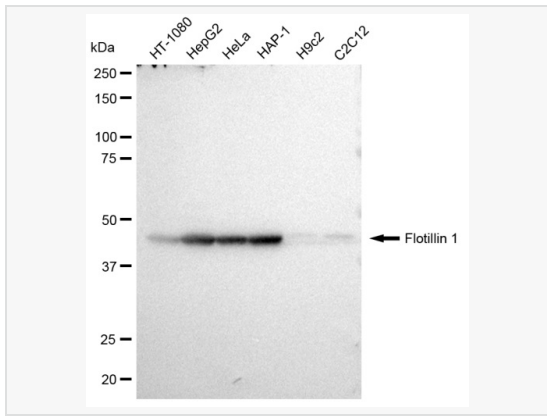
Immunocytochemical staining of HeLa cells using Flotillin 1 antibody (R020309, 1:1,000), Top panel: wild-type (WT); Bottom panel: Flotillin 1 shRNA knockdown (KD). Nuclei were stained blue with DAPI; Flotillin 1 was stained magenta with Alexa Fluor® 647. Scale bar, 20 μ m. Permeabilization: Triton.



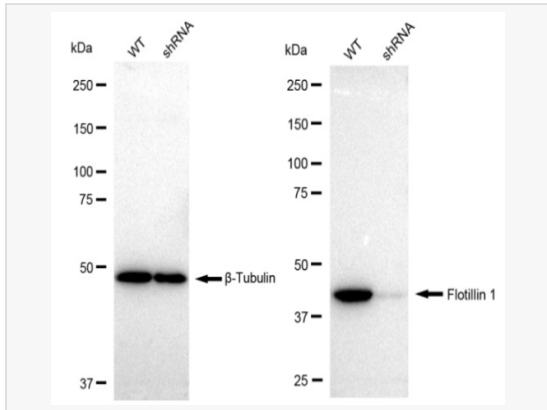
Flow cytometric analysis of Flotillin 1 expression in HepG2 cells using Flotillin 1 antibody (R020309, 1:2,000). Green, isotype control; red, Flotillin 1.



Immunocytochemical staining of HepG2 cells with Flotillin 1 antibody (R020309, 1:1,000). Nuclei were stained blue with DAPI; Flotillin 1 was stained magenta with Alexa Fluor® 647. Images were taken using Leica stellaris 5. Protein abundance based on laser Intensity and smart gain: Medium. Scale bar: 20 μ m.



Western blotting analysis using Flotillin 1 antibody (R020309). Total cell lysates (30 μ g) from various cell lines were loaded and separated by SDS-PAGE. The blot was incubated with Flotillin 1 antibody (R020309, 1:10,000) and HRP-conjugated goat anti-rabbit secondary antibody (1:50,000) respectively. Image was developed using ECL Substrate Kit.



Western blotting analysis using Flotillin 1 antibody (R020309). Flotillin 1 expression in wild type (WT) and Flotillin 1 shRNA knockdown (KD) HeLa cells with 30 μ g of total cell lysates. β -Tubulin serves as a loading control. The blot was incubated with Flotillin 1 antibody (R020309, 1:10,000) and HRP-conjugated goat anti-rabbit secondary antibody (1:50,000) respectively. Image was developed using ECL Substrate Kit.