

## [KD Validated] Anti-BUB1B Rabbit mAb

Purified Recombinant Rabbit Monoclonal Antibody

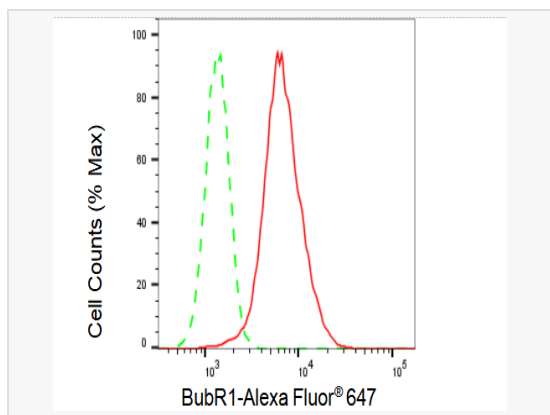
Catalog # R020299

### Product Information

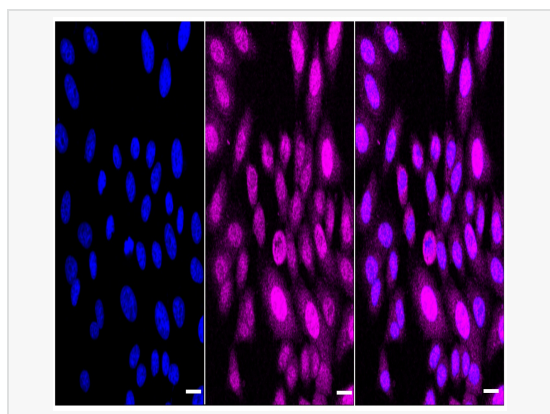
Application	WB, FC, IF (Cell)/ICC
Reactivity	Human
Dilution	WB 1:1,000~1:5,000; FC 1:200~1:2,000; IF 1:100~1:1,000
Host	Rabbit
Clonality	Monoclonal
Clone No.	33S56O75
Isotype	IgG
Label	Unconjugated
Immunogen	A synthesized peptide derived from human BubR1
Format	Affinity purified monoclonal antibody supplied in PBS with 0.02% sodium azide and 50% glycerol, pH 7.3.
Storage	Shipped on wet ice. Store at -20°C. Stable for 12 months from date of receipt. Aliquoting is unnecessary for -20°C storage.
Precautions	[KD Validated] Anti-BUB1B Rabbit mAb [33S56O75] is for research use only and not for use in diagnostic or therapeutic procedures.

### Protein Information

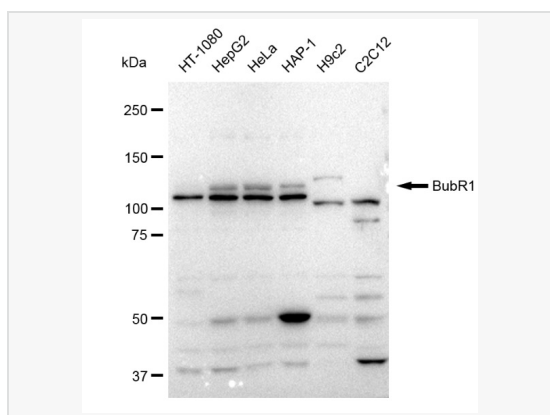
Synonyms	BUB1 Mitotic Checkpoint Serine/Threonine Kinase B; BUBR1; MAD3L; SSK1; Bub1A; Mitotic Checkpoint Serine/Threonine-Protein Kinase BUB1 Beta; MAD3/BUB1-Related Protein Kinase; Mitotic Checkpoint Kinase MAD3L; HBUBR1; Budding Uninhibited By Benzimidazoles 1 (Yeast Homolog), Beta; Budding Uninhibited By Benzimidazoles 1 Homolog Beta (Yeast); Budding Uninhibited By Benzimidazoles 1 Homolog Beta; BUB1B, Mitotic Checkpoint Serine/Threonine Kinase; Protein SSK1; EC 2.7.11.1; BUB1beta; MVA1.
Calculated MW	Calculated MW: 120 kDa, Observed MW: 120 kDa
Uniprot ID	O60566
Gene ID	701
Background	Essential component of the mitotic checkpoint. Required for normal mitosis progression. The mitotic checkpoint delays anaphase until all chromosomes are properly attached to the mitotic spindle. One of its checkpoint functions is to inhibit the activity of the anaphase-promoting complex/cyclosome (APC/C) by blocking the binding of CDC20 to APC/C, independently of its kinase activity. The other is to monitor kinetochore activities that depend on the kinetochore motor CENPE. Required for kinetochore localization of CENPE.



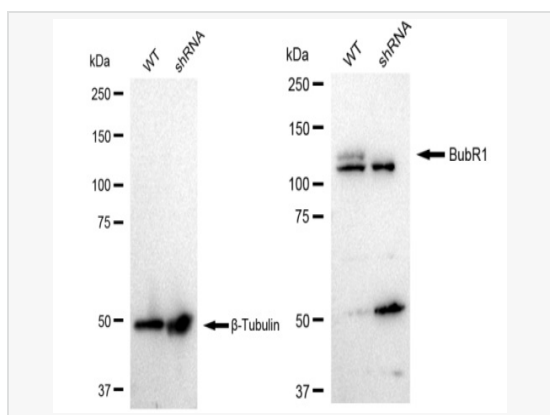
Flow cytometric analysis of BubR1 expression in HepG2 cells using BubR1 antibody (R020299, 1:2,000). Green, isotype control; red, BubR1.



Immunocytochemical staining of HepG2 cells with BubR1 antibody (R020299, 1:1,000). Nuclei were stained blue with DAPI; BubR1 was stained magenta with Alexa Fluor® 647. Images were taken using Leica stellaris 5. Protein abundance based on laser Intensity and smart gain: Medium. Scale bar: 20 µm.



Western blotting analysis using BubR1 antibody (R020299). Total cell lysates (30 µg) from various cell lines were loaded and separated by SDS-PAGE. The blot was incubated with BCL11 transcription factor B antibody (R020299, 1:5,000) and HRP-conjugated goat anti-rabbit secondary antibody (1:20,000) respectively. Image was developed using ECL Substrate Kit.



Western blotting analysis using BubR1 antibody (R020299). BubR1 expression in wild type (WT) and BubR1 shRNA knockdown (KD) HeLa cells with 30 µg of total cell lysates. β-Tubulin serves as a loading control. The blot was incubated with BubR1 antibody (R020299, 1:5,000) and HRP-conjugated goat anti-rabbit secondary antibody (1:20,000) respectively. Image was developed using ECL Substrate Kit.