

## [KD Validated] Anti-GSK3B Rabbit mAb

Purified Recombinant Rabbit Monoclonal Antibody

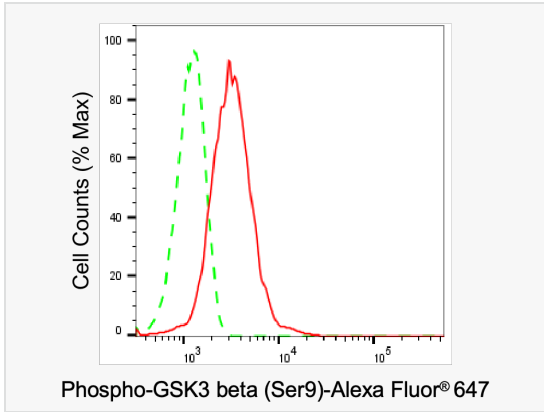
Catalog # R020295

### Product Information

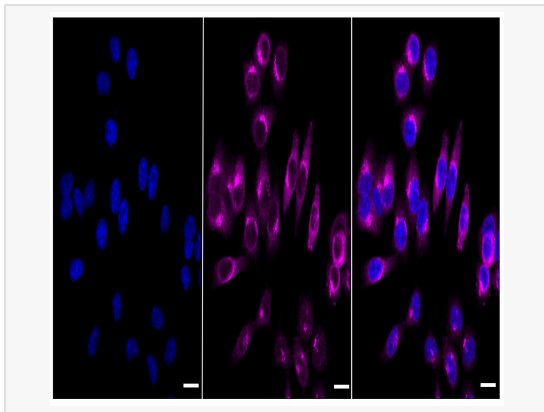
Application	WB, FC, IF (Cell)/ICC
Reactivity	Human
Dilution	WB 1:1,000~1:10,000; FC 1:200~1:2,000; IF 1:100~1:1,000
Host	Rabbit
Clonality	Monoclonal
Clone No.	21H00B19
Isotype	IgG
Label	Unconjugated
Immunogen	A synthesized peptide derived from human Phospho-GSK3 beta (Ser9)
Format	Affinity purified monoclonal antibody supplied in PBS with 0.02% sodium azide and 50% glycerol, pH 7.3.
Storage	Shipped on wet ice. Store at -20°C. Stable for 12 months from date of receipt. Aliquoting is unnecessary for -20°C storage.
Precautions	[KD Validated] Anti-GSK3B Rabbit mAb [21H00B19] is for research use only and not for use in diagnostic or therapeutic procedures.

### Protein Information

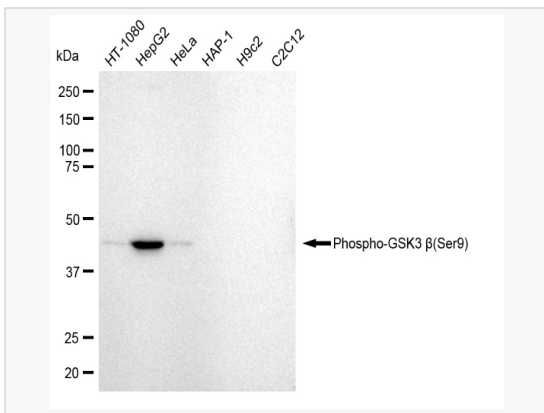
Synonyms	GSK3B; Glycogen Synthase Kinase 3 Beta; Serine/Threonine-Protein Kinase GSK3B; Glycogen Synthase Kinase-3 Beta; EC 2.7.11.26; GSK-3 Beta; EC 2.7.11.1; EC 2.7.11.
Calculated MW	Calculated MW: 47 kDa, Observed MW: 46 kDa
Uniprot ID	P49841
Gene ID	2932
Background	The protein encoded by this gene is a serine-threonine kinase belonging to the glycogen synthase kinase subfamily. It is a negative regulator of glucose homeostasis and is involved in energy metabolism, inflammation, ER-stress, mitochondrial dysfunction, and apoptotic pathways. Defects in this gene have been associated with Parkinson disease and Alzheimer disease. [provided by RefSeq, Aug 2017]
Cellular Location	Cytoplasm. Nucleus. Cell membrane. The phosphorylated form shows localization to cytoplasm and cell membrane. The MEMO1-RHOA-DIAPH1 signaling pathway controls localization of the phosphorylated form to the cell membrane.
Tissue Location	Expressed in testis, thymus, prostate and ovary and weakly expressed in lung, brain and kidney.



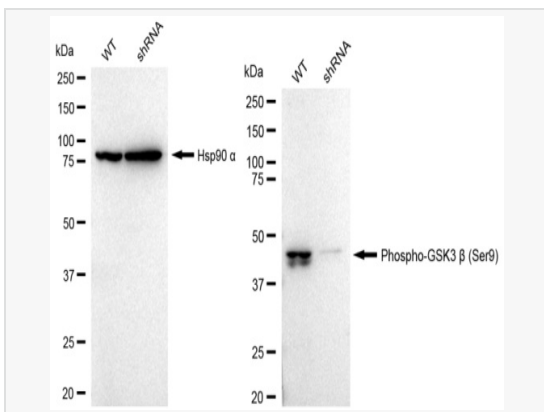
Flow cytometric analysis of Phospho-GSK3 beta (Ser9) expression in HepG2 cells using Phospho-GSK3 beta (Ser9) antibody (R020295, 1:2,000). Green, isotype control; red, Phospho-GSK3 beta (Ser9).



Immunocytochemical staining of HepG2 cells with Phospho-GSK3 beta (Ser9) antibody (R020295, 1:1,000). Nuclei were stained blue with DAPI; Phospho-GSK3 beta (Ser9) was stained magenta with Alexa Fluor® 647. Images were taken using Leica stellaris 5. Protein abundance based on laser Intensity and smart gain: High. Scale bar: 20 µm.



Western blotting analysis using Phospho-GSK3 beta (Ser9) antibody (R020295). Total cell lysates (30 µg) from various cell lines were loaded and separated by SDS-PAGE. The blot was incubated with Phospho-GSK3 beta (Ser9) antibody (R020295, 1:10,000) and HRP-conjugated goat anti-rabbit secondary antibody (1:20,000) respectively. Image was developed using ECL Substrate Kit.



Western blotting analysis using Phospho-GSK3 beta (Ser9) antibody (R020295). Phospho-GSK3 beta (Ser9) expression in wild type (WT) and phospho-GSK3 beta (Ser9) shRNA knockdown (KD) HeLa cells with 30 µg of total cell lysates. Hsp90 α serves as a loading control. The blot was incubated with Phospho-GSK3 beta (Ser9) antibody (R020295, 1:10,000) and HRP-conjugated goat anti-rabbit secondary antibody (1:20,000) respectively. Image was developed using ECL Substrate Kit.