

[KD Validated] Anti-CHAF1A Rabbit mAb

Purified Recombinant Rabbit Monoclonal Antibody

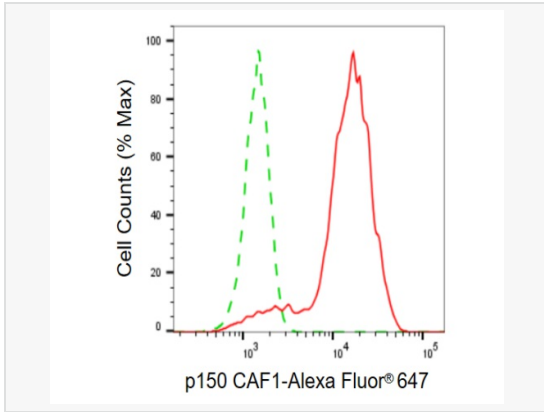
Catalog # R020280

Product Information

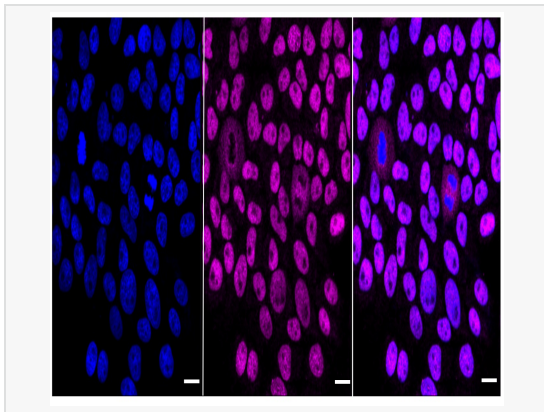
Application	WB, FC, IF (Cell)/ICC
Reactivity	Human
Dilution	WB 1:1,000~1:5,000; FC 1:200~1:2,000; IF 1:100~1:1,000
Host	Rabbit
Clonality	Monoclonal
Clone No.	61M14J81
Isotype	IgG
Label	Unconjugated
Immunogen	A synthesized peptide derived from human integrin p150 CAF1
Format	Affinity purified monoclonal antibody supplied in PBS with 0.02% sodium azide and 50% glycerol, pH 7.3.
Storage	Shipped on wet ice. Store at -20°C. Stable for 12 months from date of receipt. Aliquoting is unnecessary for -20°C storage.
Precautions	[KD Validated] Anti-CHAF1A Rabbit mAb [61M14J81] is for research use only and not for use in diagnostic or therapeutic procedures.

Protein Information

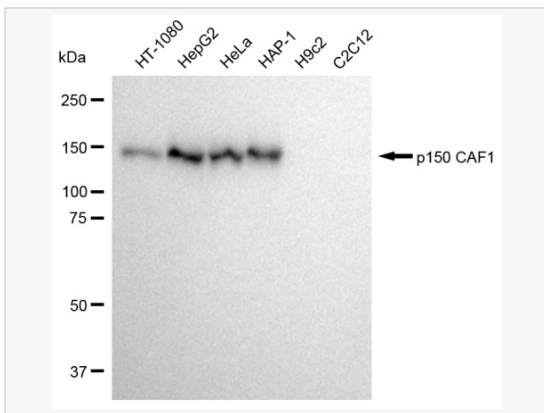
Synonyms	CAF1P150; CAF1B; CAF-1; CAF1; P150; Chromatin Assembly Factor I P150 Subunit; Chromatin Assembly Factor I (150 kDa); CAF-I 150 kDa Subunit; CAF-1 Subunit A; CAF-I P150; MGC71229; Hp150; Chromatin Assembly Factor 1, Subunit A (P150); CTB-50L17.7; CAF.
Calculated MW	Calculated MW: 107 kDa, Observed MW: 150 kDa
Uniprot ID	Q13111
Gene ID	10036
Background	Chromatin assembly factor I (CAF1) is a nuclear complex consisting of p50, p60 (CHAF1B; MIM 601245), and p150 (CHAF1A) subunits that assembles histone octamers onto replicating DNA in vitro (Kaufman et al., 1995 [PubMed 7600578]). [supplied by OMIM, Mar 2008]
Cellular Location	Nucleus. DNA replication foci.



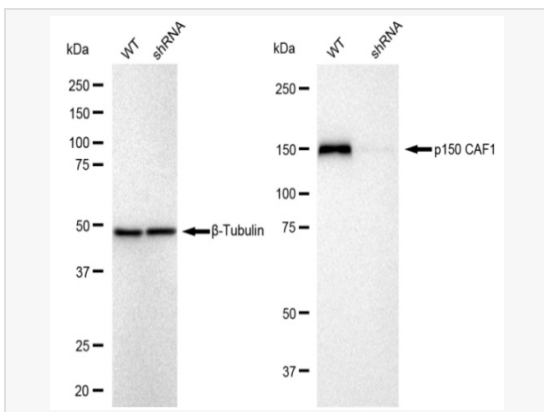
Flow cytometric analysis of p150 CAF1 expression in HepG2 cells using p150 CAF1 antibody (R020280, 1:2,000). Green, isotype control; red, p150 CAF1.



Immunocytochemical staining of HepG2 cells with p150 CAF1 antibody (R020280, 1:1,000). Nuclei were stained blue with DAPI; p150 CAF1 was stained magenta with Alexa Fluor® 647. Images were taken using Leica stellaris 5. Protein abundance based on laser Intensity and smart gain: Midum. Scale bar: 20 µm.



Western blotting analysis using p150 CAF1 antibody (R020280). Total cell lysates (30 µg) from various cell lines were loaded and separated by SDS-PAGE. The blot was incubated with p150 CAF1 antibody (R020280, 1:5,000) and HRP-conjugated goat anti-rabbit secondary antibody (1:20,000) respectively. Image was developed using ECL Substrate Kit.



Western blotting analysis using p150 CAF1 antibody (R020280). p150 CAF1 expression in wild type (WT) and p150 CAF1 shRNA knockdown (KD) HeLa cells with 30 µg of total cell lysates. β-Tubulin serves as a loading control. The blot was incubated with p150 CAF1 antibody (R020280, 1:5,000) and HRP-conjugated goat anti-rabbit secondary antibody (1:50,000) respectively. Image was developed using ECL Substrate Kit.