

[KO Validated] Anti-ROCK1 Rabbit mAb

Purified Recombinant Rabbit Monoclonal Antibody

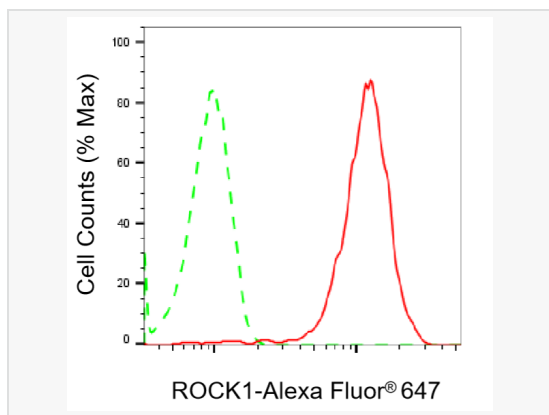
Catalog # R020155

Product Information

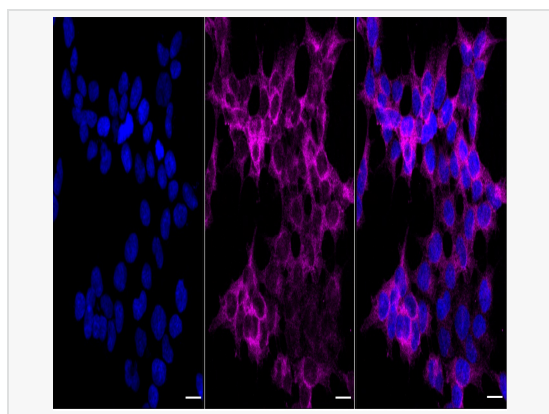
Application	WB, FC, IF (Cell)/ICC
Reactivity	Human, Mouse, Rat
Dilution	WB 1:1,000~1:5,000; FC 1:200~1:2,000; IF 1:100~1:1,000
Host	Rabbit
Clonality	Monoclonal
Clone No.	91L12S74
Isotype	IgG
Label	Unconjugated
Immunogen	A synthesized peptide derived from human ROCK1
Format	Affinity purified monoclonal antibody supplied in PBS with 0.02% sodium azide and 50% glycerol, pH 7.3.
Storage	Shipped on wet ice. Store at -20°C. Stable for 12 months from date of receipt. Aliquoting is unnecessary for -20°C storage.
Precautions	[KO Validated] Anti-ROCK1 Rabbit mAb [91L12S74] is for research use only and not for use in diagnostic or therapeutic procedures.

Protein Information

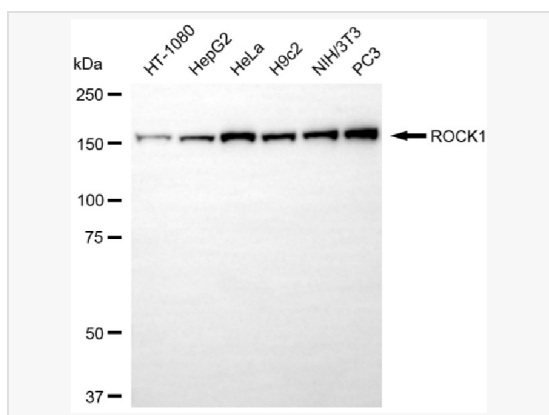
Synonyms	ROCK1; Rho Associated Coiled-Coil Containing Protein Kinase 1; P160ROCK; Renal Carcinoma Antigen NY-REN-35; Rho-Associated Protein Kinase 1; P160 ROCK-1; EC 2.7.11.1; ROCK-I; Rho-Associated, Coiled-Coil-Containing Protein Kinase 1; Rho-Associated, Coiled-Coil-Containing Protein Kinase I; EC 2.7.11.
Calculated MW	Calculated MW: 158 kDa, Observed MW: 158 kDa
Uniprot ID	Q13464
Gene ID	6093
Background	ROCK1 Protein kinase which is a key regulator of actin cytoskeleton and cell polarity. Involved in regulation of smooth muscle contraction, actin cytoskeleton organization, stress fiber and focal adhesion formation, neurite retraction, cell adhesion and motility via phosphorylation of DAPK3, GFAP, LIMK1, LIMK2, MYL9/MLC2, PFN1 and PPP1R12A. Phosphorylates FHOD1 and acts synergistically with it to promote SRC-dependent non-apoptotic plasma membrane blebbing.



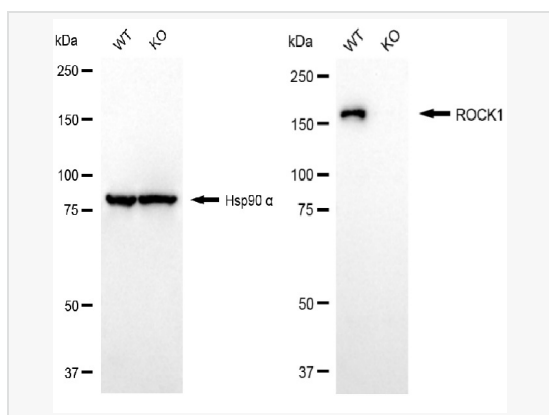
Flow cytometric analysis of ROCK1 expression in HeLa cells using ROCK1 antibody (R020155, 1:2,000). Green, isotype control; red, ROCK1.



Immunocytochemical staining of HeLa cells with ROCK1 protein antibody (R020155, 1:1,000). Nuclei were stained blue with DAPI; ROCK1 was stained magenta with Alexa Fluor® 647. Images were taken using Leica stellaris 5. Protein abundance based on laser Intensity and smart gain: Medium. Scale bar, 20 µm.



Western blotting analysis using ROCK1 antibody (R020155). Total cell lysates (30 µg) from various cell lines were loaded and separated by SDS-PAGE. The blot was incubated with ROCK1 antibody (R020155, 1:5,000) and HRP-conjugated goat anti-rabbit secondary antibody (1:20,000) respectively. Image was developed using ECL Substrate Kit.



Western blotting analysis using ROCK1 antibody (R020155). ROCK1 expression in wild-type (WT) and ROCK1 knockout (KO) 293T cells with 20 µg of total cell lysates. Hsp90 α serves as a loading control. The blot was incubated with ROCK1 antibody (R020155, 1:5,000) and HRP-conjugated goat anti-rabbit secondary antibody (1:20,000) respectively. Image was developed using ECL Substrate Kit.