

[KD Validated] Anti-CAP2 Rabbit mAb

Purified Recombinant Rabbit Monoclonal Antibody

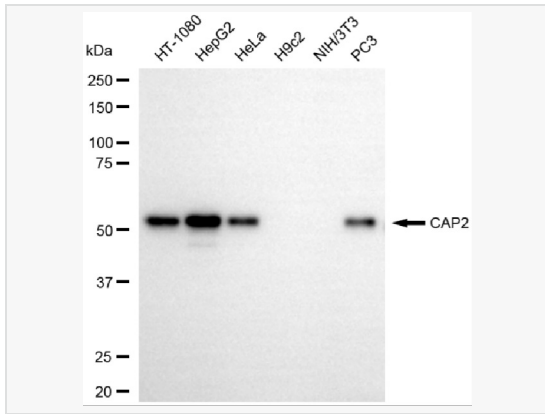
Catalog # R020088

Product Information

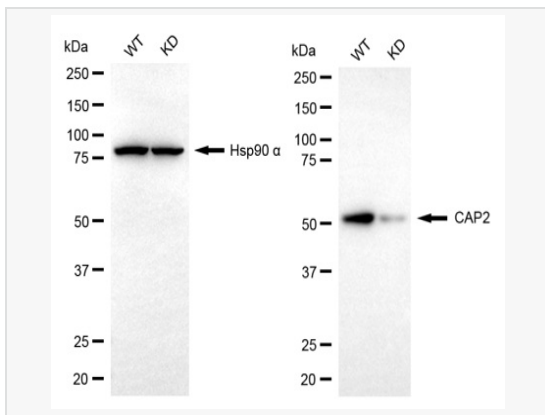
Application	WB
Reactivity	Human
Dilution	WB 1:1,000~1:5,000
Host	Rabbit
Clonality	Monoclonal
Clone No.	75L44D60
Isotype	IgG
Label	Unconjugated
Immunogen	A synthesized peptide derived from human CAP2
Format	Affinity purified monoclonal antibody supplied in PBS with 0.02% sodium azide and 50% glycerol, pH 7.3.
Storage	Shipped on wet ice. Store at -20°C. Stable for 12 months from date of receipt. Aliquoting is unnecessary for -20°C storage.
Precautions	[KD Validated] Anti-CAP2 Rabbit mAb [75L44D60] is for research use only and not for use in diagnostic or therapeutic procedures.

Protein Information

Synonyms	CAP2; Cyclase Associated Actin Cytoskeleton Regulatory Protein 2; Adenylyl Cyclase-Associated Protein 2; CAP 2; CAP, Adenylate Cyclase-Associated Protein, 2 (Yeast); CAP, Adenylate Cyclase-Associated Protein, 2; 2810452G09Rik; CMD2I.
Calculated MW	Calculated MW: 53 kDa; Observed MW: 50 kDa
Uniprot ID	P40123
Gene ID	10486
Background	May have a regulatory bifunctional role.



Western blotting analysis using CAP2 antibody (R020088). Total cell lysates (30 μ g) from various cell lines were loaded and separated by SDS-PAGE. The blot was incubated with CAP2 antibody (R020088, 1:5,000) and HRP-conjugated goat rabbit secondary antibody (1:20,000) respectively. Image was developed using ECL Substrate Kit.



Western blotting analysis using CAP2 antibody (R020088). CAP2 expression in wild-type (WT) and CAP2 knockdown (KD) HT-1080 cells with 20 μ g of total cell lysates. Hsp90 α serves as a loading control. The blot was incubated with CAP2 antibody (R020088, 1:2,500) and HRP-conjugated goat rabbit secondary antibody (1:20,000) respectively. Image was developed using ECL Substrate Kit.