

[KD Validated] Anti-NFKBIA Mouse mAb

Purified Recombinant Mouse Monoclonal Antibody

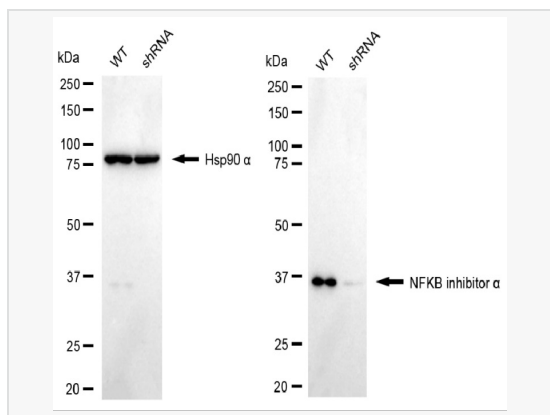
Catalog # M020076

Product Information

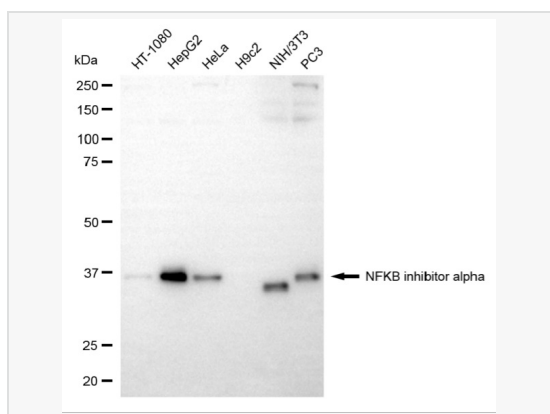
| | |
|-------------|---|
| Application | WB, IF (Cell)/ICC |
| Reactivity | Human, Mouse |
| Dilution | WB 1:500~1:2,500; IF 1:100~1:1,000 |
| Host | Mouse |
| Clonality | Monoclonal |
| Clone No. | 19R71G40 |
| Isotype | IgG |
| Label | Unconjugated |
| Immunogen | Recombinant protein of human NFKBIA |
| Format | Affinity purified monoclonal antibody supplied in PBS with 0.02% sodium azide and 50% glycerol, pH 7.3. |
| Storage | Shipped on wet ice. Store at -20°C. Stable for 12 months from date of receipt. Aliquoting is unnecessary for -20°C storage. |
| Precautions | [KD Validated] Anti-NFKBIA Mouse mAb [19R71G40] is for research use only and not for use in diagnostic or therapeutic procedures. |

Protein Information

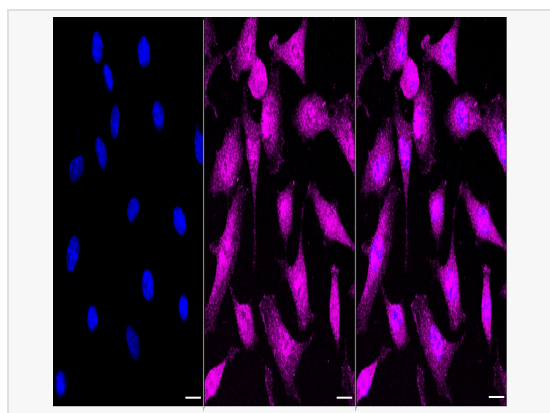
| | |
|---------------|---|
| Synonyms | I-kappa-B-alpha; NFKBI; NFKBIA; NF-kappaB inhibitor alpha; IKBA; IkappaBalpha; MAD3; RL/IF-1. |
| Calculated MW | Calculated MW: 36 kDa; Observed MW: 36 kDa |
| Uniprot ID | P25963 |
| Gene ID | 4792 |
| Background | NFKB1 (MIM 164011) or NFKB2 (MIM 164012) is bound to REL (MIM 164910), RELA (MIM 164014), or RELB (MIM 604758) to form the NFKB complex. The NFKB complex is inhibited by I-kappa-B proteins (NFKBIA or NFKBIB, MIM 604495), which inactivate NF-kappa-B by trapping it in the cytoplasm. |



Western blotting analysis using NFKB inhibitor alpha antibody (M020076). NFKB inhibitor alpha expression in wild type (WT) and NFKB inhibitor alpha (NFKBIA) shRNA knockdown (KD) HeLa cells with 20 μ g of total cell lysates. Hsp90 α serves as a loading control. The blot was incubated with NFKB inhibitor alpha antibody (M020076, 1:5,000) and HRP-conjugated goat mouse secondary antibody (1:20,000) respectively. Image was developed using ECL Substrate Kit.



Western blotting analysis using NFKB inhibitor alpha antibody (M020076). Total cell lysates (30 μ g) from various cell lines were loaded and separated by SDS-PAGE. The blot was incubated with NFKB inhibitor alpha antibody (M020076, 1:2,500) and HRP-conjugated goat mouse secondary antibody (1:20,000) respectively. Image was developed using ECL Substrate Kit.



Immunocytochemical staining of C2C12 cells with NFKB inhibitor alpha antibody (M020076, 1:1,000). Nuclei were stained blue with DAPI; was stained magenta with Alexa Fluor[®] 647. Images were taken using Leica stellaris 5. Protein abundance based on laser Intensity and smart gain: Medium. Scale bar, 20 μ m.