

[KD Validated] Anti-TFPI Rabbit mAb

Purified Recombinant Rabbit Monoclonal Antibody

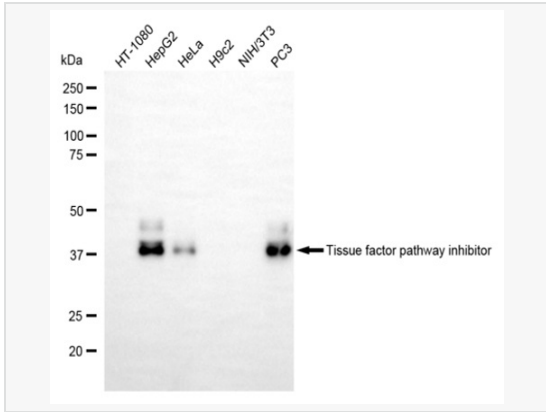
Catalog # R020052

Product Information

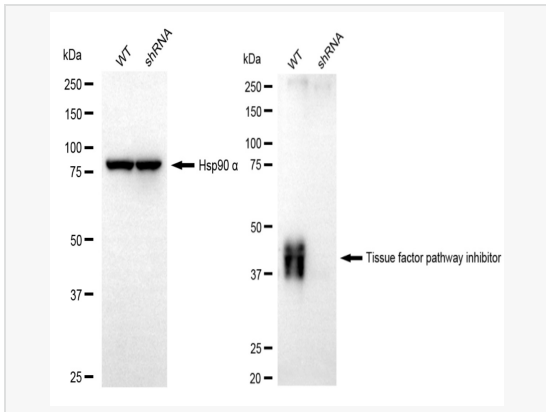
Application	WB, FC
Reactivity	Human
Dilution	WB 1:1,000~1:5,000; FC 1:200~1:2,000
Host	Rabbit
Clonality	Monoclonal
Clone No.	98A48S06
Isotype	IgG
Label	Unconjugated
Immunogen	A synthesized peptide derived from human TFPI
Format	Affinity purified monoclonal antibody supplied in PBS with 0.02% sodium azide and 50% glycerol, pH 7.3.
Storage	Shipped on wet ice. Store at -20°C. Stable for 12 months from date of receipt. Aliquoting is unnecessary for -20°C storage.
Precautions	[KD Validated] Anti-TFPI Rabbit mAb [98A48S06] is for research use only and not for use in diagnostic or therapeutic procedures.

Protein Information

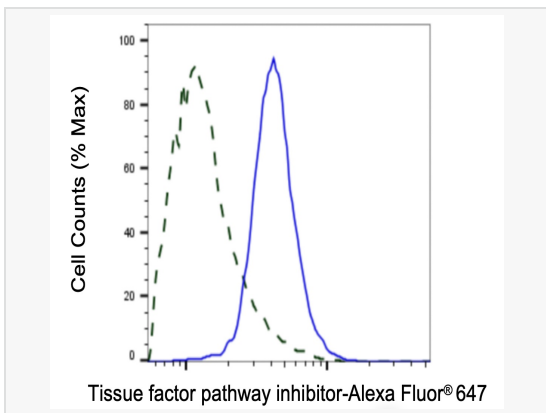
Synonyms	TFPI; Tissue Factor Pathway Inhibitor; TFPI1; EPI; Extrinsic Pathway Inhibitor; LACI; TFI; Tissue Factor Pathway Inhibitor (Lipoprotein-Associated Coagulation Inhibitor); Lipoprotein-Associated Coagulation Inhibitor; Anti-Convertin.
Calculated MW	Calculated MW: 35 kDa; Observed MW: 35-45 kDa
Uniprot ID	P10646
Gene ID	7035
Background	This gene encodes a Kunitz-type serine protease inhibitor that regulates the tissue factor (TF)-dependent pathway of blood coagulation. The coagulation process initiates with the formation of a factor VIIa-TF complex, which proteolytically activates additional proteases (factors IX and X) and ultimately leads to the formation of a fibrin clot. The product of this gene inhibits the activated factor X and VIIa-TF proteases in an autoregulatory loop. Inhibition of the encoded protein restores hemostasis in animal models of hemophilia. This gene encodes multiple protein isoforms that differ in their inhibitory activity, specificity and cellular localization. [provided by RefSeq, Jul 2016]
Cellular Location	Secreted.
Tissue Location	Mostly in endothelial cells.



Western blotting analysis using tissue factor pathway inhibitor antibody (R020052). Total cell lysates (30 μ g) from various cell lines were loaded and separated by SDS-PAGE. The blot was incubated with tissue factor pathway inhibitor antibody (R020052, 1:5,000) and HRP-conjugated goat anti rabbit secondary antibody (1:20,000) respectively. Image was developed using ECL Substrate Kit.



Western blotting analysis using tissue factor pathway inhibitor antibody (R020052). Tissue factor pathway inhibitor expression in wild-type (WT) and tissue factor pathway inhibitor (TFP1) shRNA knockdown (KD) HepG2 cells with 20 μ g of total cell lysates. Hsp90 α serves as a loading control. The blot was incubated with tissue factor pathway inhibitor antibody (R020052, 1:5,000) and HRP-conjugated goat anti-rabbit secondary antibody (1:20,000) respectively. Image was developed using ECL Substrate Kit.



Validation of Tissue factor pathway inhibitor knockdown using flow cytometry. Wild-type(WT, Blue) and knockdown(KD, Green) HepG2 cells were stained with Tissue factor pathway inhibitor antibody (R020052, 1:2,000) and analyzed using BD flow cytometer.