

## [KD Validated] Anti-ADGRG1 Mouse mAb

Purified Recombinant Mouse Monoclonal Antibody

Catalog # M020020

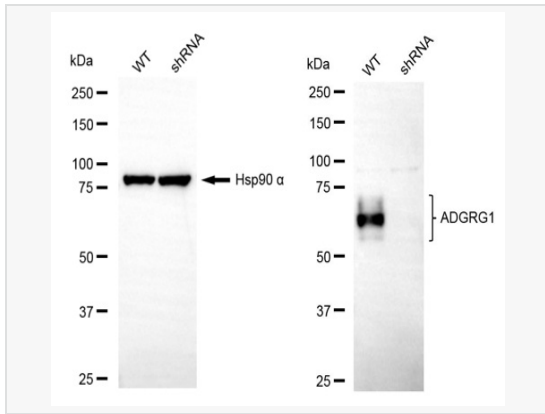
### Product Information

Application	WB
Reactivity	Human
Dilution	WB 1:500~1:2,500
Host	Mouse
Clonality	Monoclonal
Clone No.	91D53G90
Isotype	IgG
Label	Unconjugated
Immunogen	Recombinant protein of human GPR56
Format	Affinity purified monoclonal antibody supplied in PBS with 0.02% sodium azide and 50% glycerol, pH 7.3.
Storage	Shipped on wet ice. Store at -20°C. Stable for 12 months from date of receipt. Aliquoting is unnecessary for -20°C storage.
Precautions	[KD Validated] Anti-ADGRG1 Mouse mAb [91D53G90] is for research use only and not for use in diagnostic or therapeutic procedures.

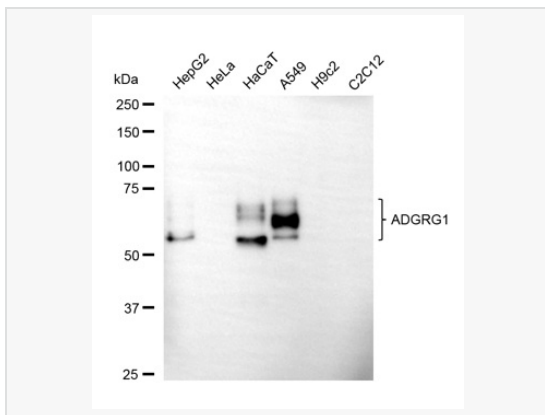
### Protein Information

Synonyms	ADGRG1; Adhesion G Protein-Coupled Receptor G1; TM7LN4; TM7XN1; GPR56; Adhesion G-Protein Coupled Receptor G1; G Protein-Coupled Receptor 56; 7-Transmembrane Protein With No EGF-Like N-Terminal Domains-1; Testicular Tissue Protein Li 77; G-Protein Coupled Receptor 56; CDCBM14B; CDCBM15A; BFPP; BPPR.
Calculated MW	Calculated MW: 78 kDa; Observed MW: 55-70 kDa
Uniprot ID	Q9Y653
Gene ID	9289
Background	This gene encodes a member of the G protein-coupled receptor family and regulates brain cortical patterning. The encoded protein binds specifically to transglutaminase 2, a component of tissue and tumor stroma implicated as an inhibitor of tumor progression. Mutations in this gene are associated with a brain malformation known as bilateral frontoparietal polymicrogyria. Alternative splicing results in multiple transcript variants. [provided by RefSeq, Feb 2014]
Cellular Location	Cell membrane Multi-pass membrane protein ADGRG1 N-terminal fragment Secreted ADGRG1 C-terminal fragment Membrane raft Interaction with its ligand COL3A1 leads to the release of ADGRG1 NT from the membrane and triggers the association of ADGRG1 CT with lipid rafts.
Tissue Location	Widely distributed with highest levels found in thyroid gland, brain and heart. Expressed in a great number of tumor cells. Expression is down-regulated in different tumors from highly metastatic cells.

## Validation Images



Western blotting analysis using ADGRG1 antibody (M020020). ADGRG1 expression in wild-type (WT) and ADGRG1 shRNA knockdown (KD) HeLa cells with 30  $\mu$ g of total cell lysates. Hsp90  $\alpha$  serves as a loading control. The blot was incubated with ADGRG1 antibody (M020020, 1:2,500) and HRP-conjugated goat anti-mouse secondary antibody (1:20,000) respectively. Image was developed using ECL Substrate Kit.



Western blotting analysis using ADGRG1 antibody (M020020). Total cell lysates (30  $\mu$ g) from various cell lines were loaded and separated by SDS-PAGE. The blot was incubated with ADGRG1 antibody (M020020, 1:2,500) and HRP-conjugated goat anti-mouse secondary antibody (1:20,000) respectively. Image was developed using ECL Substrate Kit.