

## PE Mouse Anti-Human CD45RA

Purified PE-conjugated Recombinant Mouse Monoclonal Antibody

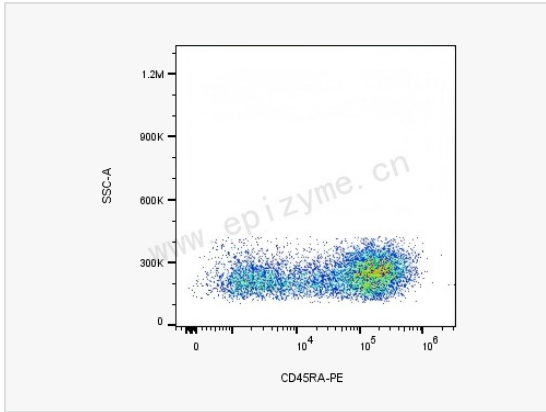
Catalog # F102108

### Product Information

Application	FC
Recommended Usage	5 $\mu$ L per million cells in 100 $\mu$ L staining volume or 5 $\mu$ L per 100 $\mu$ L of whole blood.
Reactivity	Human
Host	Mouse
Clonality	Monoclonal
Clone No.	52E21S58
Isotype	IgG2b, $\kappa$
Label	PE (Ex/Em: 565/574 nm)
Format	Phosphate-buffered solution, pH 7.2, containing 0.09% sodium azide and 0.2% (w/v) BSA.
Storage	Shipped on wet ice. Store undiluted between 2°C and 8°C and protected from prolonged exposure to light. Do not freeze.
Precautions	PE Mouse Anti-Human CD45RA [52E21S58] is for research use only and not for use in diagnostic or therapeutic procedures.

### Protein Information

Synonyms	B220; CD45; CD45R; GP180; IMD105; L-CA; LCA; LY5; T200; Ly-5; Lyt-4; loc; RT7; PTPRC_HUMAN; PTPRC; Leukocyte common antigen (L-CA); 3.1.3.48; Lymphocyte antigen 5 (Ly-5); receptor-type tyrosine-protein phosphatase C.
Uniprot ID	P08575
Gene ID	5788
Background	CD45RA is a 205-220 kD single chain type I glycoprotein. It is an exon 4 splice variant of the tyrosine phosphatase CD45. The CD45RA isoform is expressed on resting/naïve T cells, medullary thymocytes, B cells and monocytes. CD45RA enhances both T cell receptor and B cell receptor signaling. CD45 non-covalently associates with lymphocyte phosphatase-associated phosphoprotein (LPAP) on T and B lymphocytes. CD45 has been reported to be associated with several other cell surface antigens including CD1, CD2, CD3, and CD4. CD45 has also been reported to bind galectin-1. CD45 isoform expression can change in response to cytokines.
Cellular Location	Cell membrane; Single-pass type I membrane protein Membrane raft Synapse Note: Colocalized with DPP4 in membrane rafts.



Typical flow-cytometry plots of human peripheral-blood leukocytes stained with anti-CD45RA-PE (F102108).