

Anti-AIDA Rabbit mAb

Purified Recombinant Rabbit Monoclonal Antibody

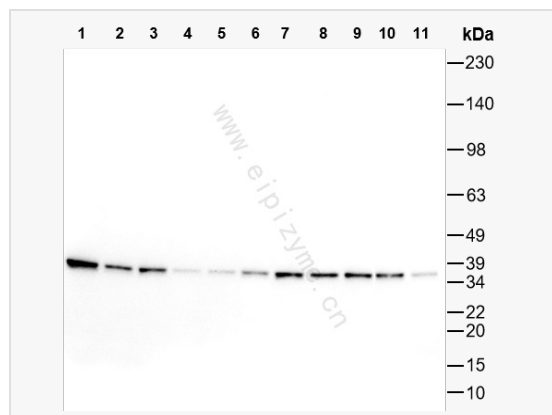
Catalog # R016116

Product Information

Application	WB, ELISA
Reactivity	Human, Mouse, Rat
Dilution	WB 1:1,000~1:2,000
Host	Rabbit
Clonality	Monoclonal
Clone No.	67A83H78
Isotype	IgG
Label	Unconjugated
Immunogen	Recombinant protein of human AIDA
Format	Affinity purified monoclonal antibody supplied in PBS with 0.02% sodium azide and 50% glycerol, pH 7.3.
Storage	Shipped on wet ice. Store at -20°C. Stable for 24 months from date of receipt. Aliquoting is unnecessary for -20°C storage.
Precautions	Anti-AIDA Rabbit mAb [67A83H78] is for research use only and not for use in diagnostic or therapeutic procedures.

Protein Information

Synonyms	C1orf80; AIDA_HUMAN; AIDA; Axin interaction partner and dorsalization antagonist.
Calculated MW	Calculated MW: 35 kDa; Observed MW: 35 kDa
Uniprot ID	Q96BJ3
Gene ID	64853
Background	Predicted to enable phosphatidylinositol binding activity. Acts upstream of or within negative regulation of JUN kinase activity. Predicted to be located in cytoplasm. Predicted to be active in membrane. [provided by Alliance of Genome Resources, Jul 2025]
Tissue Location	Widely expressed in adult tissues, with highest expression in the heart and skeletal muscle.



Western Blot - Anti-AIDA Rabbit mAb [67A83H78]

All lanes: R016116 at 1:1,000 dilution

Lane 1: HeLa (Human cervix adenocarcinoma epithelial cell) whole cell lysates

Lane 2: HepG2 (Human hepatocarcinoma epithelial cell) whole cell lysates

Lane 3: HCT116 (Human colorectal carcinoma epithelial cell) whole cell lysates

Lane 4: MCF-7 (human breast adenocarcinoma epithelial cell) whole cell lysates

Lane 5: THP-1 (Human monocytic leukemia cell) whole cell lysates

Lane 6: 293T (Human embryonic kidney cell) whole cell lysates

Lane 7: U87 (Human malignant glioblastoma epithelial cells) whole cell lysates

Lane 8: C2C12 (Mouse myoblasts epithelial cell) whole cell lysates

Lane 9: Mouse brain whole tissue lysates

Lane 10: PC-12 (Rat adrenal pheochromocytoma epithelial cell) whole cell lysates

Lane 11: Rat brain whole tissue lysates

Lysates/proteins at 10 µg per lane.

Secondary antibody: Goat Anti-Rabbit IgG (H+L), HRP Conjugated (Cat. No. LF102) at 1:5,000 dilution

Predicted band size: 35 kDa

Observed band size: 35 kDa

Developed using the ECL technique (Cat. No. SQ201).